

**Crestline Village Water District  
Source of Supply Production Report  
System Loss - Last 13 Months  
In Cubic Feet**

06/13/14

	May	June	July	August	Sept	Oct	Nov	Dec	Jan '14	Feb	Mar	Apr	May	Total
<b>Sources of Supply</b>														
Wells	1,498,424	1,506,235	2,091,243	1,350,287	1,330,182	1,210,928	1,344,261	1,168,307	1,226,426	1,029,924	1,150,473	1,135,412	1,099,166	17,141,268
Purchased Water	1,119,532	1,641,898	1,372,567	1,889,105	1,991,017	1,541,056	1,111,284	1,081,043	1,081,351	712,366	886,925	941,993	1,333,475	16,703,612
Adjustment to Wells *	0	0	0	0	0	0	0	0	0	0	0	0	0	0
<b>Total Water Supplied</b>	<b>2,617,956</b>	<b>3,148,133</b>	<b>3,463,810</b>	<b>3,239,392</b>	<b>3,321,199</b>	<b>2,751,984</b>	<b>2,455,545</b>	<b>2,249,350</b>	<b>2,307,777</b>	<b>1,742,290</b>	<b>2,037,398</b>	<b>2,077,405</b>	<b>2,432,641</b>	<b>33,844,880</b>
<b>Water Used **</b>														
Metered Accounts														
Crestline Area	1,126,551	1,327,377	1,400,287	1,365,266	1,302,605	1,096,815	986,621	956,740	944,307	820,911	910,620	936,230	1,094,574	14,268,904
Lake Gregory Area	1,260,731	1,492,131	1,671,846	1,607,907	1,691,734	1,365,278	1,172,404	937,125	1,060,911	865,939	948,510	992,275	1,080,629	16,147,420
Change in Storage	(47,368)	(33,603)	107,239	(93,285)	46,834	39,532	(25,989)	31,137	57,593	(57,425)	(20,066)	14,489	(72,865)	(53,777)
Flushing, System & Other	115,920	119,387	115,149	108,366	105,749	106,590	206,322	106,860	65,024	21,980	19,669	19,061	23,329	1,133,406
<b>Accounted for Water</b>	<b>2,455,834</b>	<b>2,905,292</b>	<b>3,294,521</b>	<b>2,988,254</b>	<b>3,146,922</b>	<b>2,608,215</b>	<b>2,339,358</b>	<b>2,031,862</b>	<b>2,127,835</b>	<b>1,651,405</b>	<b>1,858,733</b>	<b>1,962,055</b>	<b>2,125,667</b>	<b>31,495,953</b>
<b>System Loss (CF)</b>	162,122	242,841	169,289	251,138	174,277	143,769	116,187	217,488	179,942	90,885	178,665	115,350	306,974	2,348,927
<b>System Loss (%)</b>	6.2%	7.7%	4.9%	7.8%	5.2%	5.2%	4.7%	9.7%	7.8%	5.2%	8.8%	5.6%	12.6%	6.9%
<b>System Loss (GPM)</b>	27.2	40.7	29.3	43.5	29.2	24.1	18.9	40.3	29.2	16.9	29.9	20.0	53.2	33.5
<b>Month to Month Averaging ***</b>														
<b>System Loss (CF)</b>	81,061	202,482	206,065	210,214	212,708	159,023	129,978	166,838	198,715	135,414	134,775	147,008	211,162	2,195,443
<b>System Loss (%)</b>	3.1%	7.0%	6.3%	6.3%	6.5%	5.2%	5.0%	7.2%	8.7%	6.5%	7.0%	7.2%	9.1%	6.5%
<b>System Loss (GPM)</b>	13.6	33.9	35.0	36.4	36.3	26.6	21.5	29.6	34.8	23.0	23.4	25.0	36.6	31.3
<b>Estimated Uses</b>														
Known leaks - Est. loss	1,836	1,444	337	4,644	337	2,339	241	2,370	6,345	337	5,775	24,225	4,091	54,321
<b>Total Estimated Uses</b>	<b>1,836</b>	<b>1,444</b>	<b>337</b>	<b>4,644</b>	<b>337</b>	<b>2,339</b>	<b>241</b>	<b>2,370</b>	<b>6,345</b>	<b>337</b>	<b>5,775</b>	<b>24,225</b>	<b>4,091</b>	<b>54,321</b>
<b>Unaccounted for Water (CF)</b>	160,286	241,397	168,952	246,494	173,940	141,430	115,946	215,118	173,597	90,548	172,890	91,125	302,883	2,294,607
<b>Unaccounted For (%)</b>	6.1%	7.7%	4.9%	7.6%	5.2%	5.1%	4.7%	9.6%	7.5%	5.2%	8.5%	4.4%	12.5%	6.8%
<b>Unaccounted For (GPM)</b>	26.9	40.4	29.3	42.7	29.1	23.7	18.8	39.9	28.2	16.8	29.0	15.8	52.4	32.7
Number of Days in Period	31	31	30	30	31	31	32	28	32	28	31	30	30	364

**NOTES:**

Estimated - Includes estimated billing period. This month includes estimated consumption. The following billing period will reflect adjustments to actual water used.

\* - Currently there are no Adjustments to Wells being made.

\*\* - Water Used - Metered Accounts is adjusted to the time period in Total Water Supplied

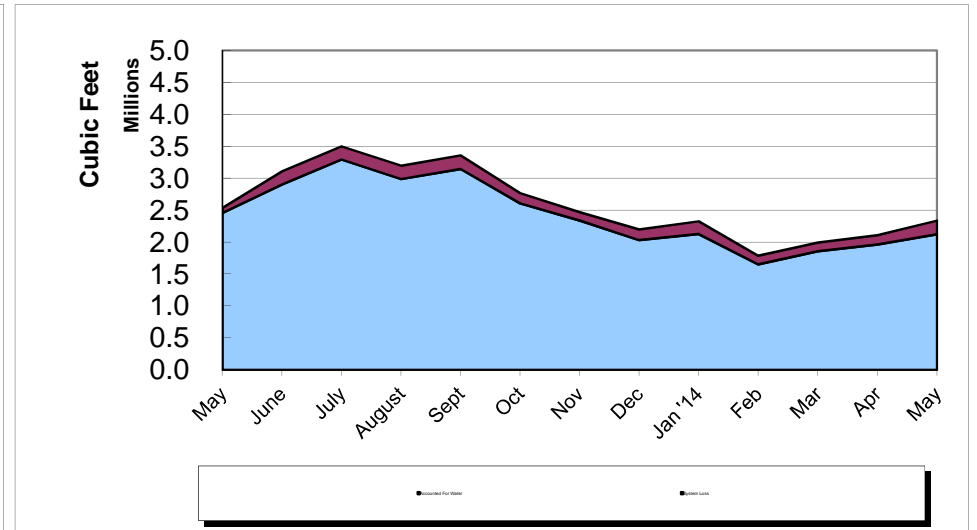
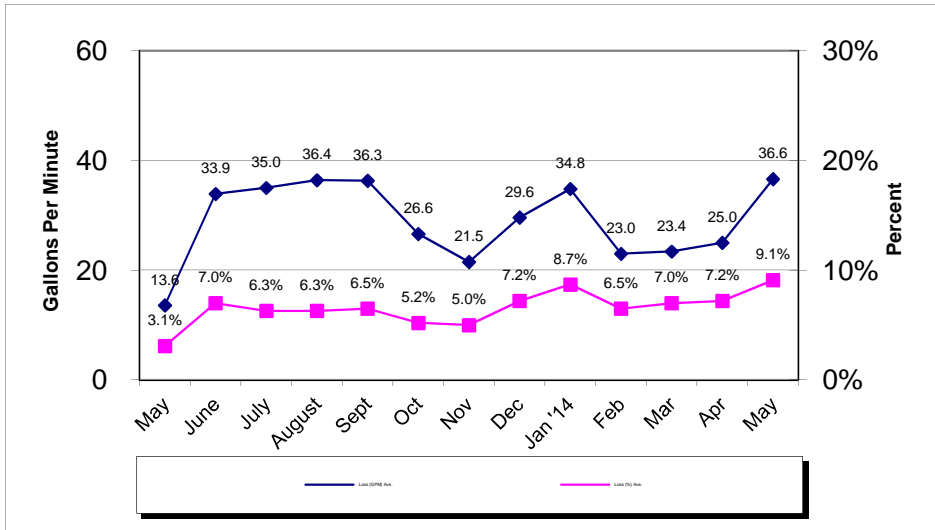
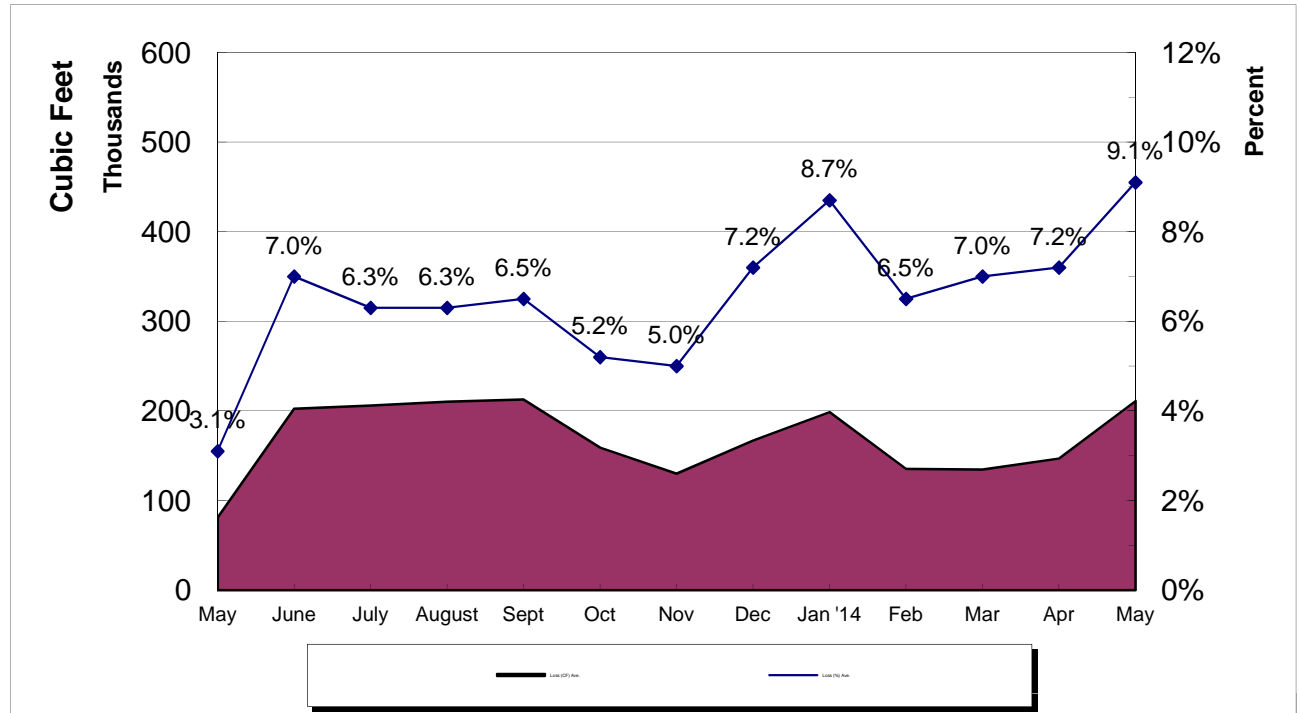
\*\*\* - Month to Month averaging averages the System Loss for each period with the immediately prior period for trending purposes.

System Loss Costs	This Month	Average
Cost of System Loss:	\$5,575	\$4,458
Cost of 5% System Loss:	3,211	3,437
<b>Amount above (below) 5% System Loss</b>	<b>\$2,364</b>	<b>\$1,021</b>
Note: Cost is calculated at highest cost (CLAWA Rate: \$2.64/100 c.f.)		

# Crestline Village Water District

## System Loss Last 13 Months

With Month to Month Averaging



# Crestline Village Water District

System Report on: 05/30/14

For Month of: May 2014

Water Storage (Gal)	Capacity	Gallons/ Foot	Level (FT)	Current Storage	% of Capacity
Beacon I & II	385,354	16,754	18.87	316,148	82.04%
Saxon	337,674	14,681	16.34	239,888	71.04%
Pinecrest I & II	2,063,492	54,302	22.27	1,209,306	58.60%
Zurich	171,245	7,611	17.15	130,529	76.22%
Lakeview	1,230,212	27,959	32.88	919,292	74.73%
Old Mill	705,900	27,150	22.93	622,550	88.19%
Barn	444,443	19,753	18.87	372,739	83.87%
Wilson	983,681	33,920	25.82	875,814	89.03%
Chillon	337,674	14,681	17.73	260,294	77.08%
Brookside	748,067	28,772	21.48	618,023	82.62%
Chamois	1,026,532	39,482	22.31	880,843	85.81%
<b>Total</b>	<b>8,434,274</b>		<b>236.65</b>	<b>6,445,426</b>	<b>76.42%</b>

WELLS	Production M-T-D (Cubic Feet)	Status
Altdorf	66,587	On
Pioneer-2	47,961	On
Pioneer-1	51,728	On
Old Mill Springs	22,020	On
Maple Springs	35,069	On
Willow Springs	12,830	On
Brookside Springs	3,380	On
Hillside Springs	10,530	On
Pinecrest 1 & 2	33,570	On
Pinecrest Vertical	50,480	On
Cypress Vertical	71,830	On
Anderson Vertical	94,900	On
Wilson Springs 1 & 2	108,981	On
Wilson Vertical	129,600	On
Felsen Vertical	154,190	On
Horst	56,600	On
Jewel 64	70,841	On
Cathcart	21,100	On
Bergschrund	12,829	On
Chamois	0	Off
Chamois Vertical	39,350	On
	0	0
Chillon 64	0	Off
	0	0
Lewter	4,790	On
<b>Total</b>	<b>1,099,166</b>	

C.L.A.W.A.	FLOWS - GPM				Production M-T-D (Cubic Feet)
	Timed	Requested	Variance	% Variance	
CF - Crestline	50	50	0	0.00%	292,246
Mile High 2"	0	0	0	0.00%	94,037
Mile High 4"	40	40	0	0.00%	104,011
Pinecrest 2"	0	0	0	0.00%	0
Pinecrest 4"	200	200	0	0.00%	788,636
Lake Drive 2"	0	0	0	0.00%	0
Lake Drive 4"	0	0	0	0.00%	0
Camp Seely	60	60	0	0.00%	54,545
<b>Total</b>	<b>290</b>	<b>290</b>	<b>0</b>	<b>0.00%</b>	<b>1,333,475</b>

May Purchases	GPM	Cubic Feet	Wells	GPM	Cubic Feet
Last Year M-T-D:	187.6	1,083,465		251.1	1,450,203
Actual M-T-D:	230.9	1,333,475		190.3	1,099,166
Over/(Under) Last Year:	43.3	250,010.0		(60.8)	(351,037.0)

Total	GPM	Cubic Feet
Last Year M-T-D:	438.7	2,533,668
Actual M-T-D:	421.2	2,432,641
Over/(Under) Last Year:	(17.5)	(101,027.0)

**Crestline Village Water District  
Source of Supply Production Report  
Cubic Feet  
Last 13 Months**

06/13/14

<b>Source Name</b>	<b>May '13</b>	<b>June</b>	<b>July</b>	<b>August</b>	<b>September</b>	<b>October</b>	<b>November</b>	<b>December</b>	<b>January '14</b>	<b>February</b>	<b>March</b>	<b>April</b>	<b>May</b>	<b>Last 12 Months</b>	<b>13 Months</b>
<b>Division 10</b>															
Altdorf	81,350	78,639	74,348	71,364	72,723	71,503	74,466	65,955	76,202	64,375	76,237	68,536	66,587	860,935	942,285
Pioneer #2	63,688	60,240	57,663	55,976	57,007	55,775	56,206	48,471	52,238	47,128	51,721	48,985	47,961	639,371	703,059
Pioneer #1	55,731	50,942	47,997	45,933	46,521	45,468	47,108	41,224	42,795	38,958	57,516	45,501	51,728	561,691	617,422
Old Mill Springs	35,510	32,870	28,400	25,750	26,230	25,940	26,300	22,860	22,750	20,950	26,300	24,440	22,020	304,810	340,320
Maple Springs	67,691	63,999	59,693	56,174	55,397	52,476	51,481	42,586	45,213	37,324	40,766	36,909	35,069	577,087	644,778
Willow Springs	35,930	30,300	27,120	24,680	22,740	21,380	20,300	16,450	16,240	6,300	16,060	14,070	12,830	228,470	264,400
Brookside Springs	15,530	11,300	6,800	6,670	6,530	17,690	18,140	14,210	11,300	9,220	2,020	3,350	3,380	110,610	126,140
Hillside Springs	17,400	16,440	15,320	14,730	13,790	13,300	13,370	10,930	12,170	10,340	11,520	10,820	10,530	153,260	170,660
Pinecrest	57,250	55,710	46,700	46,590	44,390	40,720	39,040	32,570	35,030	28,910	36,280	33,350	33,570	472,860	530,110
Pinecrest Vertical	83,130	77,520	66,570	67,970	63,470	61,250	59,390	48,750	54,470	46,310	51,240	49,760	50,480	697,180	780,310
Cypress Vertical	116,950	120,800	93,070	93,300	92,690	76,290	98,070	84,070	96,270	82,570	93,290	90,610	71,830	1,092,860	1,209,810
Anderson Vertical	88,300	121,500	111,900	108,600	113,600	107,000	106,500	89,000	95,000	60,400	52,400	99,800	94,900	1,160,600	1,248,900
Division 10 Totals	718,460	720,260	635,581	617,737	615,088	588,792	610,371	517,076	559,678	452,785	515,350	526,131	500,885	6,859,734	7,578,194
<b>Division 20</b>															
Wilson Springs #1 & 2	151,800	148,900	141,900	138,300	117,300	130,436	134,407	118,007	125,789	110,596	113,716	109,378	108,981	1,497,710	1,649,510
Wilson Vertical	167,600	180,700	169,400	163,900	168,000	127,500	157,300	149,500	137,400	135,800	137,800	133,500	129,600	1,790,400	1,958,000
Felsen Vertical	196,170	195,900	168,150	179,270	180,230	121,320	197,810	171,210	167,090	125,550	167,220	166,870	154,190	1,994,810	2,190,980
Horst	89,700	85,400	79,700	76,300	76,100	72,500	71,500	60,800	67,400	55,700	61,500	58,100	56,600	821,600	911,300
Jewell No. 64	74,019	74,675	79,952	79,280	81,308	80,393	82,253	72,027	79,812	73,558	71,107	61,996	70,841	907,202	981,221
Cathcart	27,200	26,500	24,600	23,300	23,500	23,000	23,400	21,300	23,400	19,600	22,500	21,400	21,100	273,600	300,800
Bergschrund	16,639	17,521	21,547	20,217	19,736	18,711	18,292	15,556	17,929	14,134	14,817	13,642	12,829	204,931	221,570
Chamois	5,400	5,400	5,000	2,600	100	0	0	0	0	0	0	0	0	13,100	18,500
Chamois Vertical	45,550	45,410	41,450	44,200	43,530	43,200	43,740	38,190	42,800	37,560	41,550	39,870	39,350	500,850	546,400
Valle	0	0	0	0	0	0	0	0	0	0	0	0	0	0	0
Chillon 64 (stand-by)	0	0	0	0	0	0	0	0	0	0	0	0	0	0	0
Government	0	0	0	0	0	0	0	0	0	0	0	0	0	0	0
Lewter	5,886	5,569	5,287	5,183	5,290	5,076	5,188	4,641	5,128	4,641	4,913	4,525	4,790	60,231	66,117
Division 20 Totals	779,964	785,975	736,986	732,550	715,094	622,136	733,890	651,231	666,748	577,139	635,123	609,281	598,281	8,064,434	8,844,398
<b>Total District Sources</b>	<b>1,498,424</b>	<b>1,506,235</b>	<b>1,372,567</b>	<b>1,350,287</b>	<b>1,330,182</b>	<b>1,210,928</b>	<b>1,344,261</b>	<b>1,168,307</b>	<b>1,226,426</b>	<b>1,029,924</b>	<b>1,150,473</b>	<b>1,135,412</b>	<b>1,099,166</b>	<b>14,924,168</b>	<b>16,422,592</b>
<b>C.L.A.W.A.</b>															
Crest Forest 6"	57,888	296,123	375,535	334,492	336,497	294,118	303,877	341,310	283,556	273,262	304,144	293,048	292,246	3,728,208	3,786,096
Mile High Park 2"	152,553	237,286	289,639	292,447	266,805	234,104	182,540	164,158	128,824	109,291	181,845	174,078	94,037	2,355,054	2,507,607
Mile High Park 4"	0	0	0	0	0	0	0	0	0	0	0	0	104,011	104,011	104,011
Pinecrest 2"	0	0	0	0	0	2,273	0	443,757	77,527	0	0	0	0	523,557	523,557
Pinecrest 4"	591,578	862,834	1,152,139	1,193,984	1,206,417	963,636	522,193	67,914	562,567	329,813	374,198	454,412	788,636	8,478,743	9,070,321
Lake Drive 2"	0	34,425	113,636	0	116,324	0	0	0	0	0	0	0	0	264,385	264,385
Lake Drive 4"	0	113,503	66,845	0	27,273	0	0	0	0	0	0	0	0	207,621	207,621
Camp Seely	76,471	97,727	93,449	68,182	37,701	46,925	102,674	63,904	28,877	0	26,738	20,455	54,545	641,177	717,648
<b>C.L.A.W.A. Totals</b>	<b>878,490</b>	<b>1,641,898</b>	<b>2,091,243</b>	<b>1,889,105</b>	<b>1,991,017</b>	<b>1,541,056</b>	<b>1,111,284</b>	<b>1,081,043</b>	<b>1,081,351</b>	<b>712,366</b>	<b>886,925</b>	<b>941,993</b>	<b>1,333,475</b>	<b>16,302,756</b>	<b>17,181,246</b>
<b>Grand Totals</b>	<b>2,376,914</b>	<b>3,148,133</b>	<b>3,463,810</b>	<b>3,239,392</b>	<b>3,321,199</b>	<b>2,751,984</b>	<b>2,455,545</b>	<b>2,249,350</b>	<b>2,307,777</b>	<b>1,742,290</b>	<b>2,037,398</b>	<b>2,077,405</b>	<b>2,432,641</b>	<b>31,226,924</b>	<b>33,603,838</b>

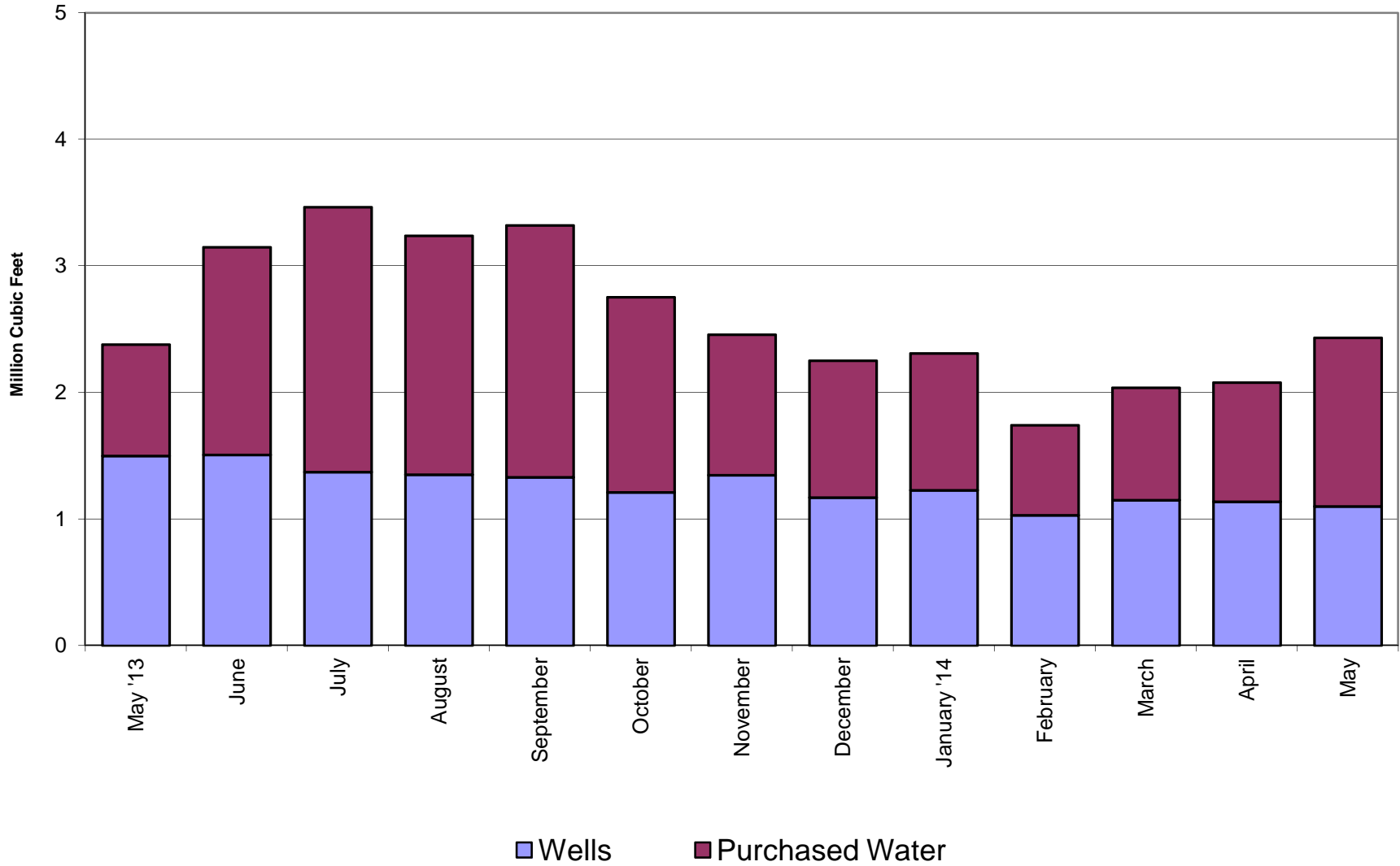
**Crestline Village Water District  
Source of Supply Production Report  
Cubic Feet  
Last 13 Months**

06/13/14

<u>Source Name</u>	<u>May '13</u>	<u>June</u>	<u>July</u>	<u>August</u>	<u>September</u>	<u>October</u>	<u>November</u>	<u>December</u>	<u>January '14</u>	<u>February</u>	<u>March</u>	<u>April</u>	<u>May</u>	<u>Last 12 Months</u>	<u>13 Months</u>
<b>District Sources</b>															
Division 10	718,460	720,260	635,581	617,737	615,088	588,792	610,371	517,076	559,678	452,785	515,350	526,131	500,885	6,859,734	7,578,194
Division 20	779,964	785,975	736,986	732,550	715,094	622,136	733,890	651,231	666,748	577,139	635,123	609,281	598,281	8,064,434	8,844,398
<b>Total</b>	<b>1,498,424</b>	<b>1,506,235</b>	<b>1,372,567</b>	<b>1,350,287</b>	<b>1,330,182</b>	<b>1,210,928</b>	<b>1,344,261</b>	<b>1,168,307</b>	<b>1,226,426</b>	<b>1,029,924</b>	<b>1,150,473</b>	<b>1,135,412</b>	<b>1,099,166</b>	<b>14,924,168</b>	<b>16,422,592</b>
Division 10	47.95%	47.82%	46.31%	45.75%	46.24%	48.62%	45.41%	44.26%	45.63%	43.96%	44.79%	46.34%	45.57%	45.96%	46.14%
Division 20	52.05%	52.18%	53.69%	54.25%	53.76%	51.38%	54.59%	55.74%	54.37%	56.04%	55.21%	53.66%	54.43%	54.04%	53.86%
<b>Total</b>	<b>100.00%</b>	<b>100.00%</b>	<b>100.00%</b>	<b>100.00%</b>	<b>100.00%</b>	<b>100.00%</b>	<b>100.00%</b>	<b>100.00%</b>	<b>100.00%</b>	<b>100.00%</b>	<b>100.00%</b>	<b>100.00%</b>	<b>100.00%</b>	<b>100.00%</b>	<b>100.00%</b>
<b>All Sources</b>															
District Sources	1,498,424	1,506,235	1,372,567	1,350,287	1,330,182	1,210,928	1,344,261	1,168,307	1,226,426	1,029,924	1,150,473	1,135,412	1,099,166	14,924,168	16,422,592
C.L.A.W.A.	878,490	1,641,898	2,091,243	1,889,105	1,991,017	1,541,056	1,111,284	1,081,043	1,081,351	712,366	886,925	941,993	1,333,475	16,302,756	17,181,246
<b>Total Sources</b>	<b>2,376,914</b>	<b>3,148,133</b>	<b>3,463,810</b>	<b>3,239,392</b>	<b>3,321,199</b>	<b>2,751,984</b>	<b>2,455,545</b>	<b>2,249,350</b>	<b>2,307,777</b>	<b>1,742,290</b>	<b>2,037,398</b>	<b>2,077,405</b>	<b>2,432,641</b>	<b>31,226,924</b>	<b>33,603,838</b>
District Sources	63.04%	47.85%	39.63%	41.68%	40.05%	44.00%	54.74%	51.94%	53.14%	59.11%	56.47%	54.66%	45.18%	47.79%	48.87%
C.L.A.W.A.	36.96%	52.15%	60.37%	58.32%	59.95%	56.00%	45.26%	48.06%	46.86%	40.89%	43.53%	45.34%	54.82%	52.21%	51.13%
<b>Total Sources</b>	<b>100.00%</b>	<b>100.00%</b>	<b>100.00%</b>	<b>100.00%</b>	<b>100.00%</b>	<b>100.00%</b>	<b>100.00%</b>	<b>100.00%</b>	<b>100.00%</b>	<b>100.00%</b>	<b>100.00%</b>	<b>100.00%</b>	<b>100.00%</b>	<b>100.00%</b>	<b>100.00%</b>

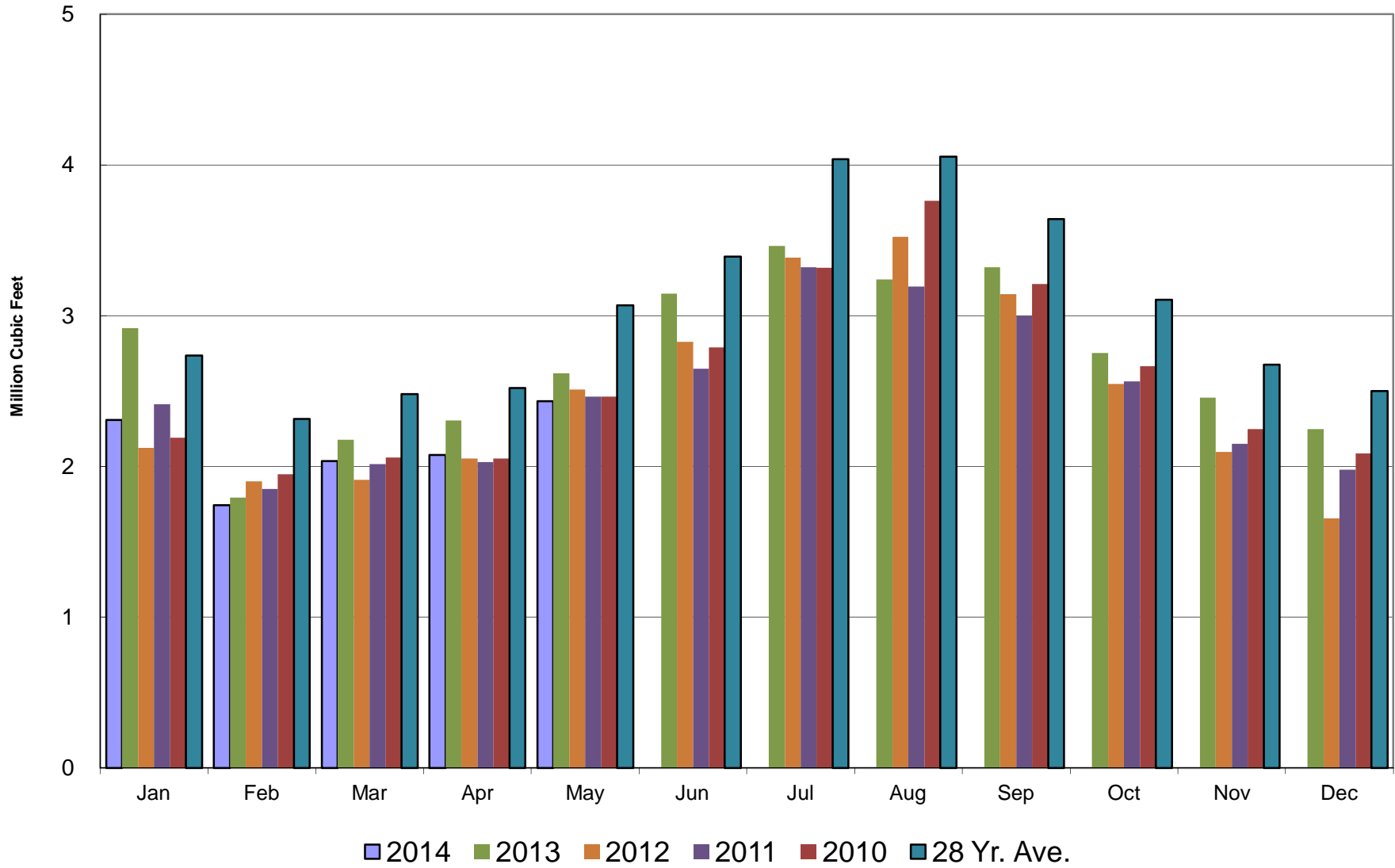
# Crestline Village Water District

## Water Sources - Last 13 Months



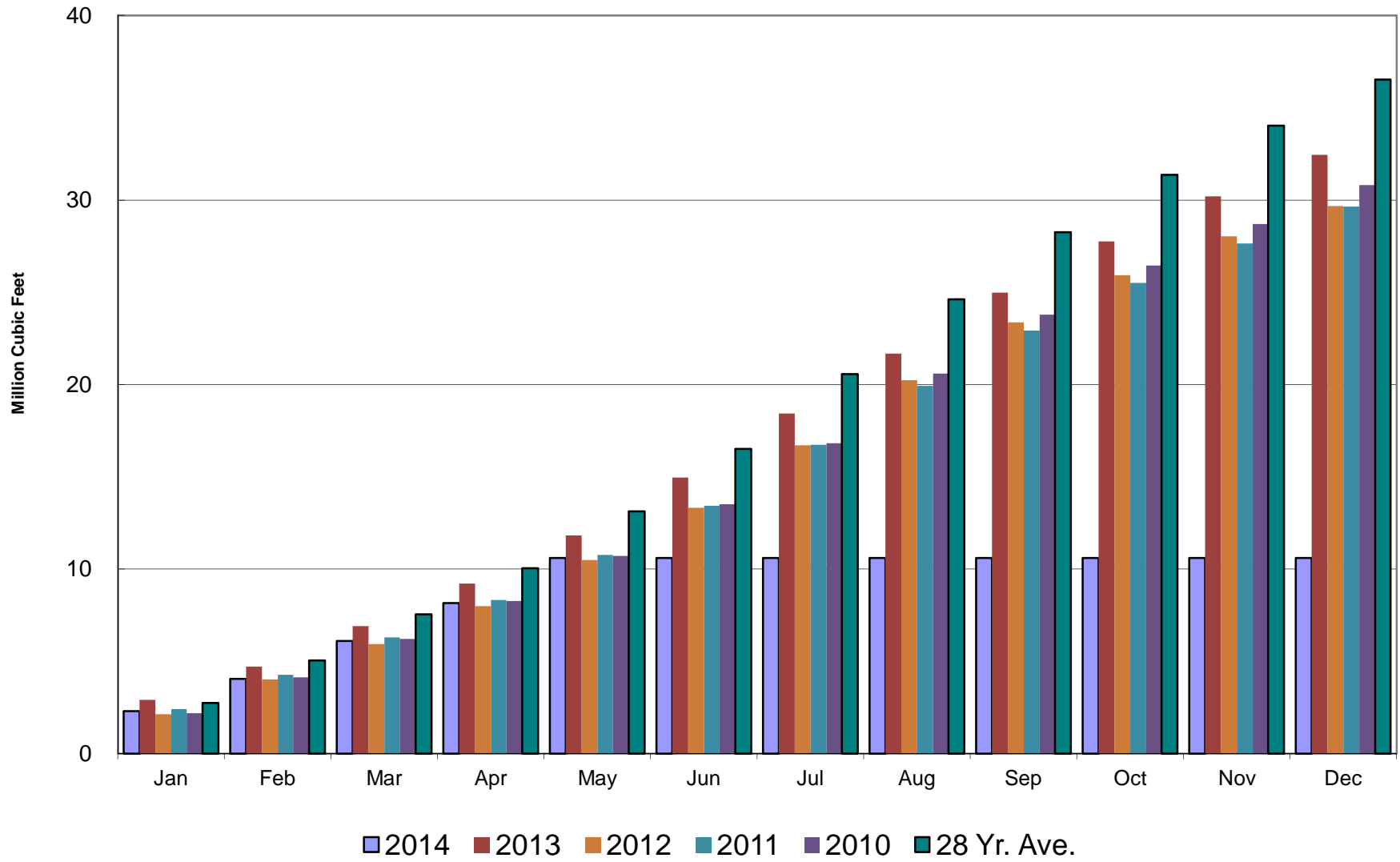
# Crestline Village Water District

## Total Production by Month



# Crestline Village Water District

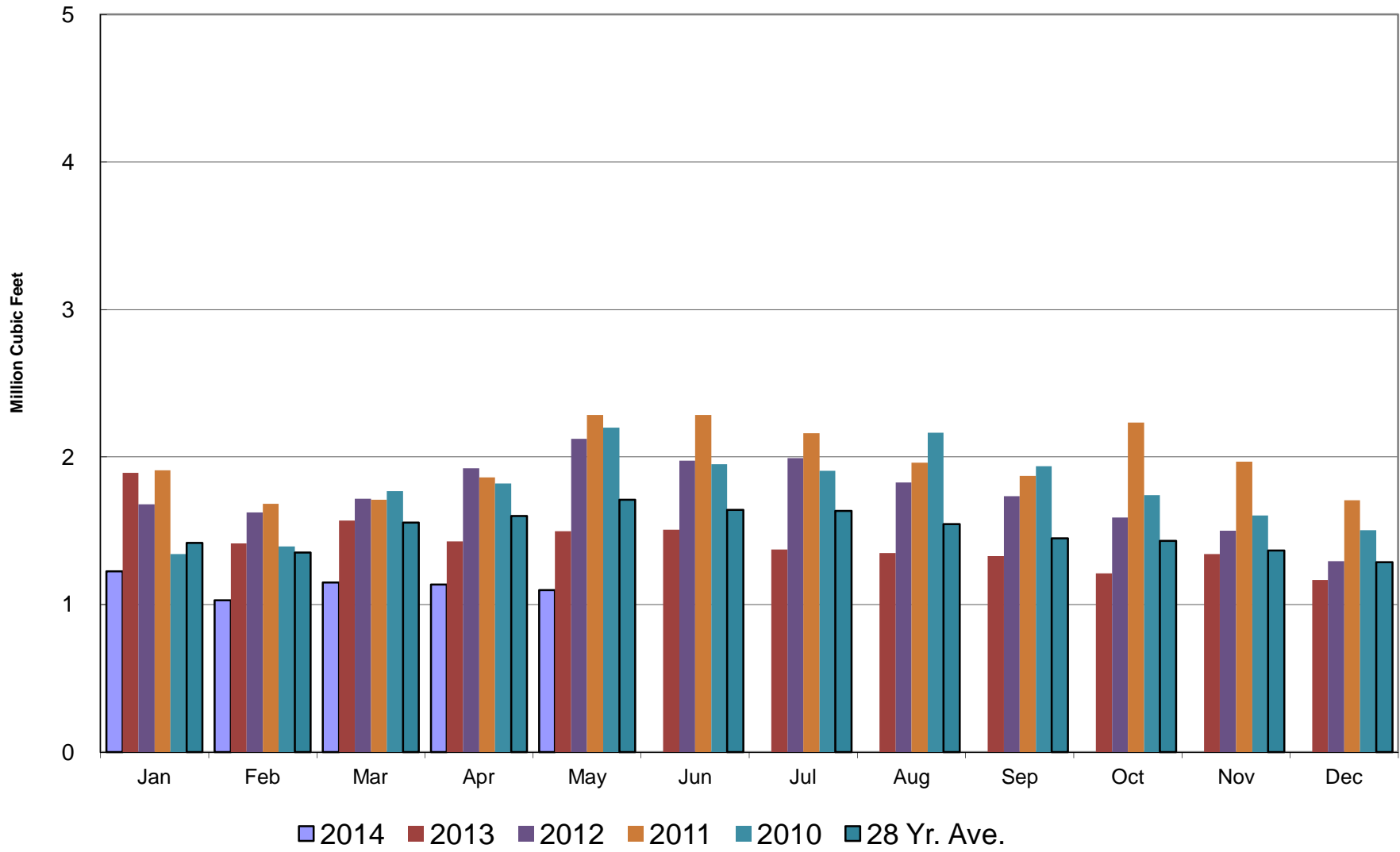
## Total Production Cumulative





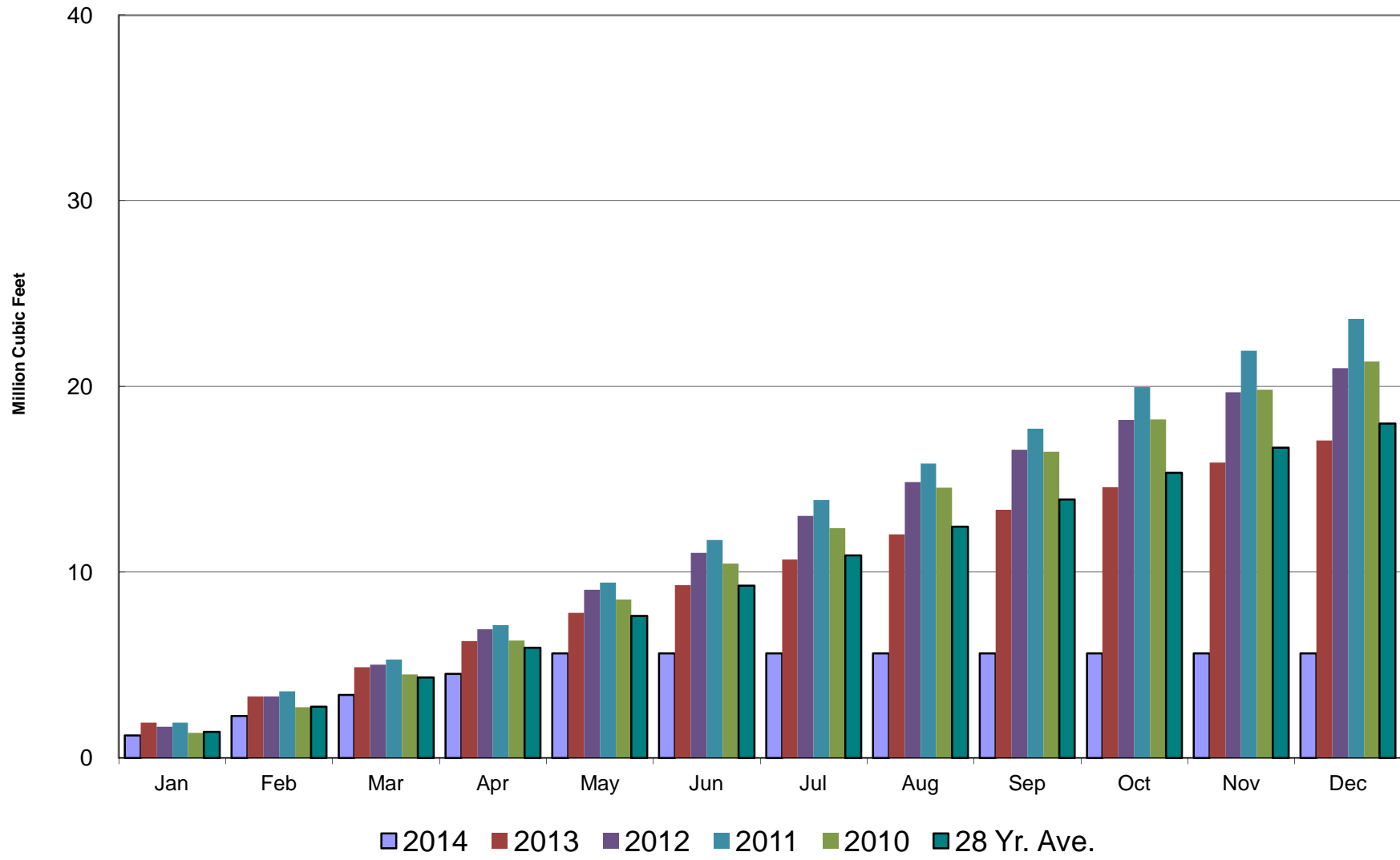
# Crestline Village Water District

## Well Production by Month



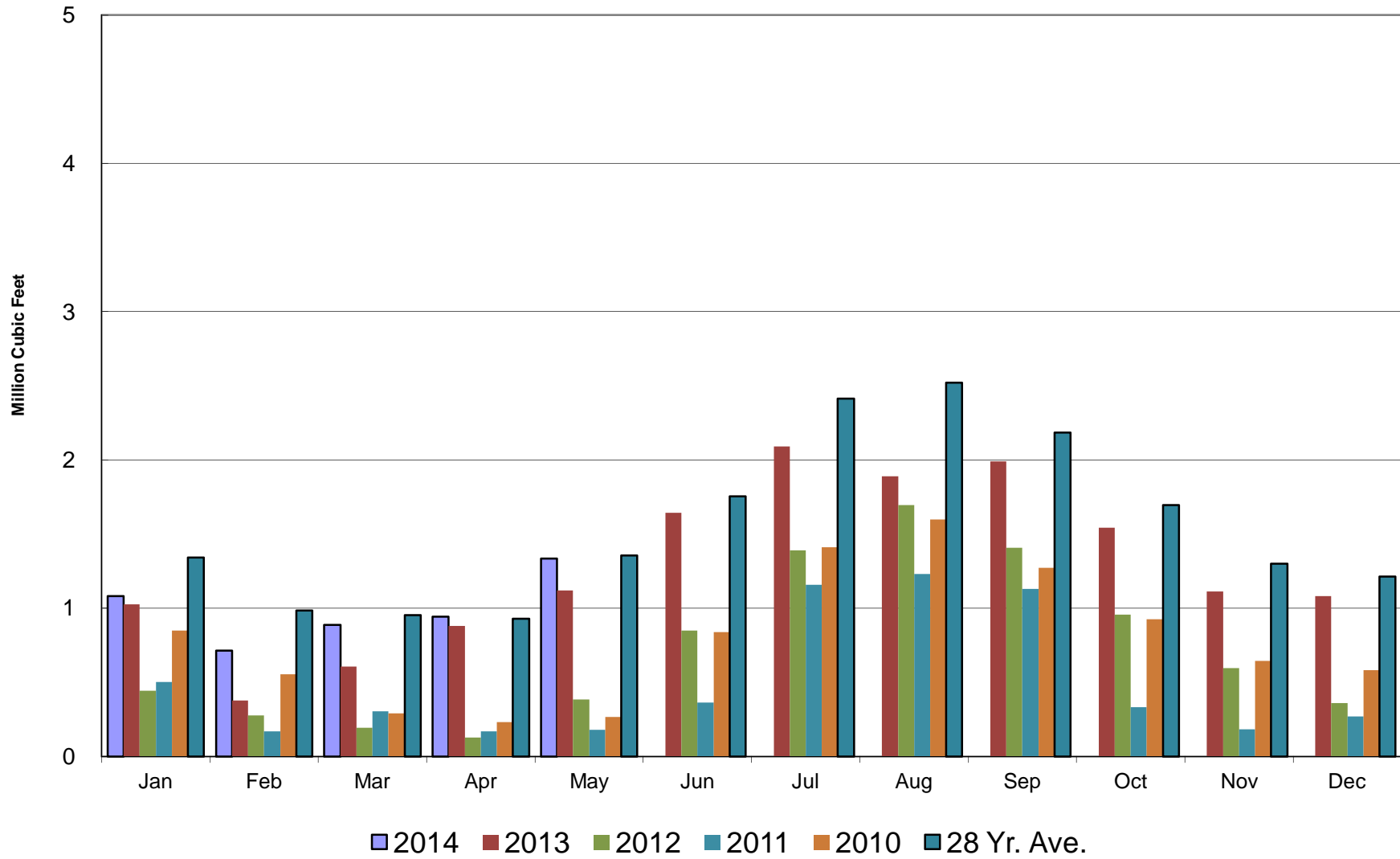
# Crestline Village Water District

## Well Production Cumulative



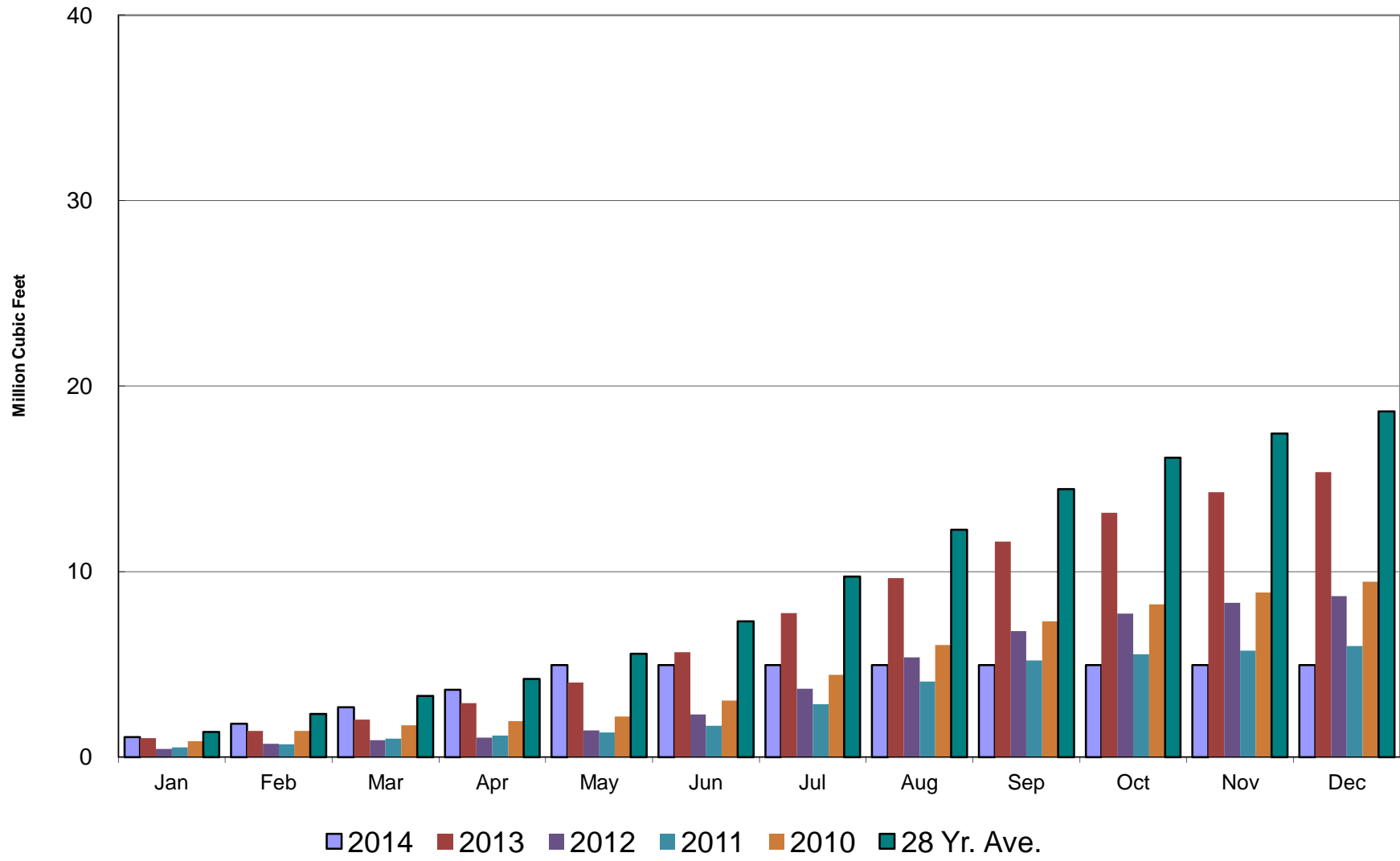
# Crestline Village Water District

## Purchased Water by Month



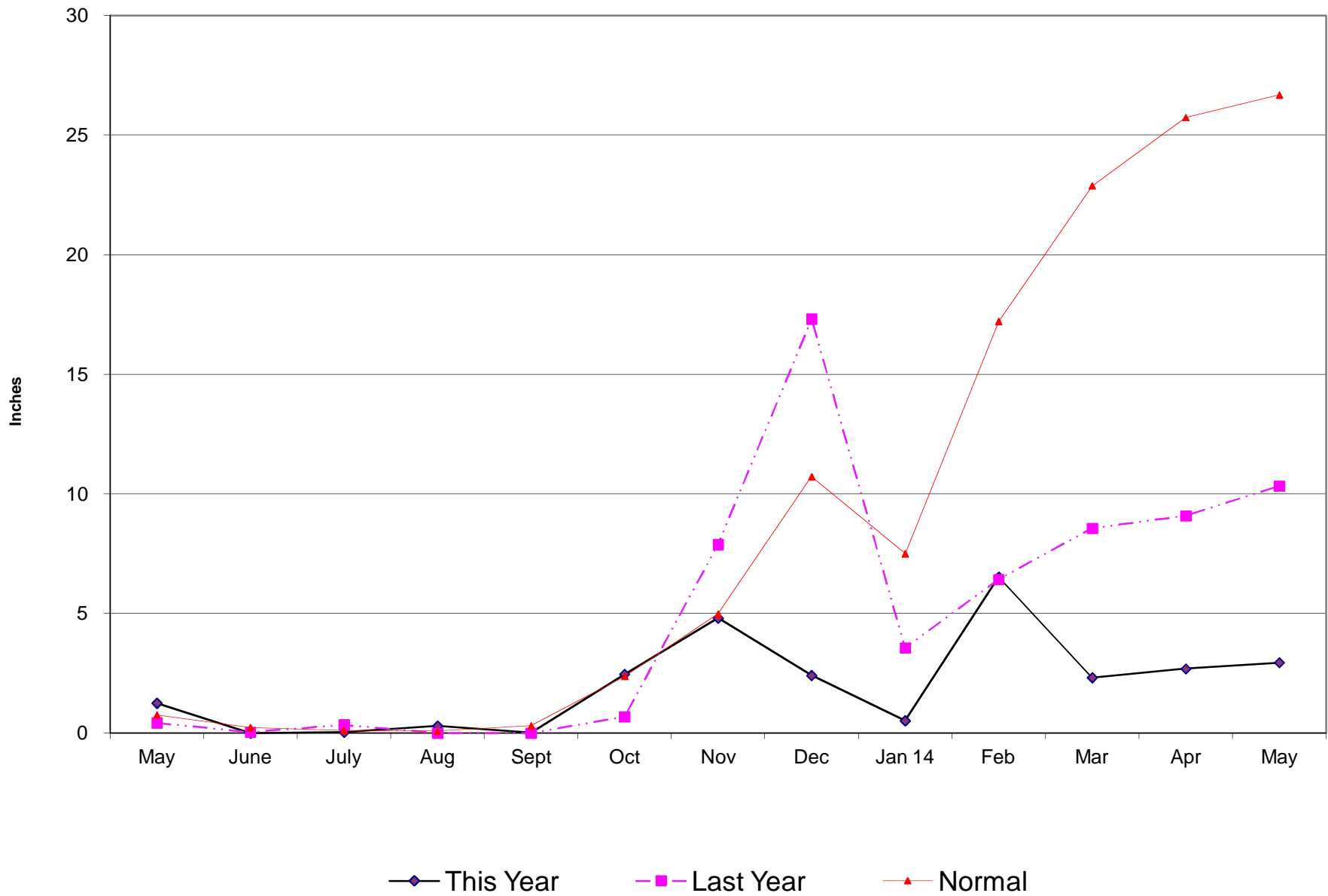
# Crestline Village Water District

## Purchased Water Cumulative



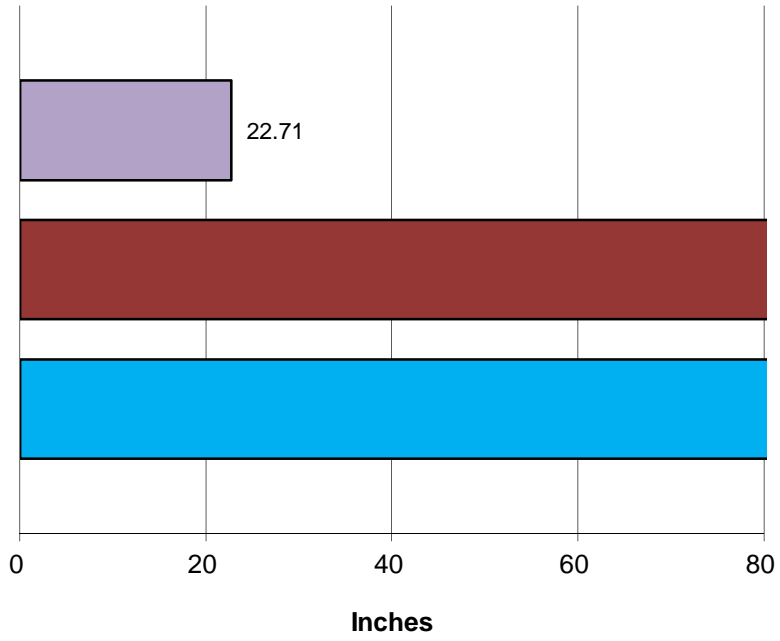
# Crestline Village Water District

## Rainfall - Last 13 Months



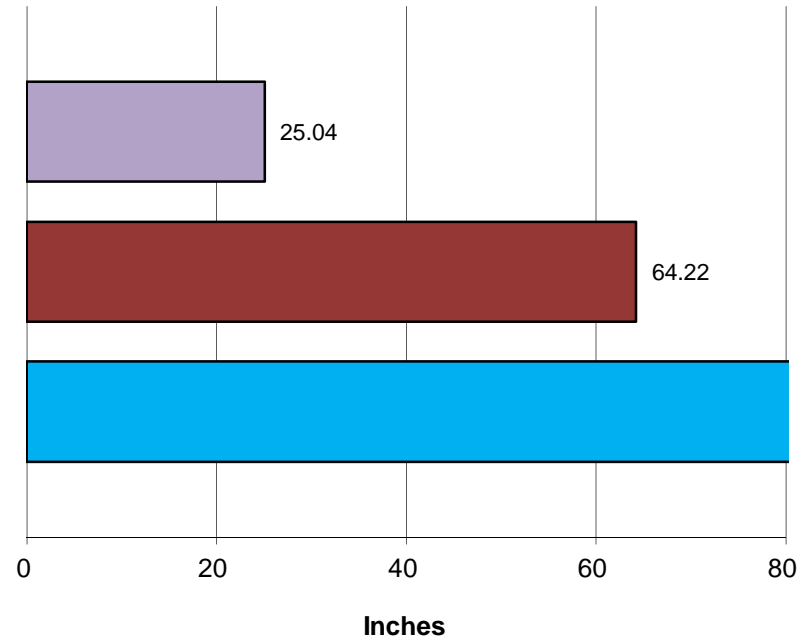
# Crestline Village Water District

**Total Rainfall  
July 1, 2013 to  
Beginning of Current Month**



■ This Year ■ Last Year ■ Normal

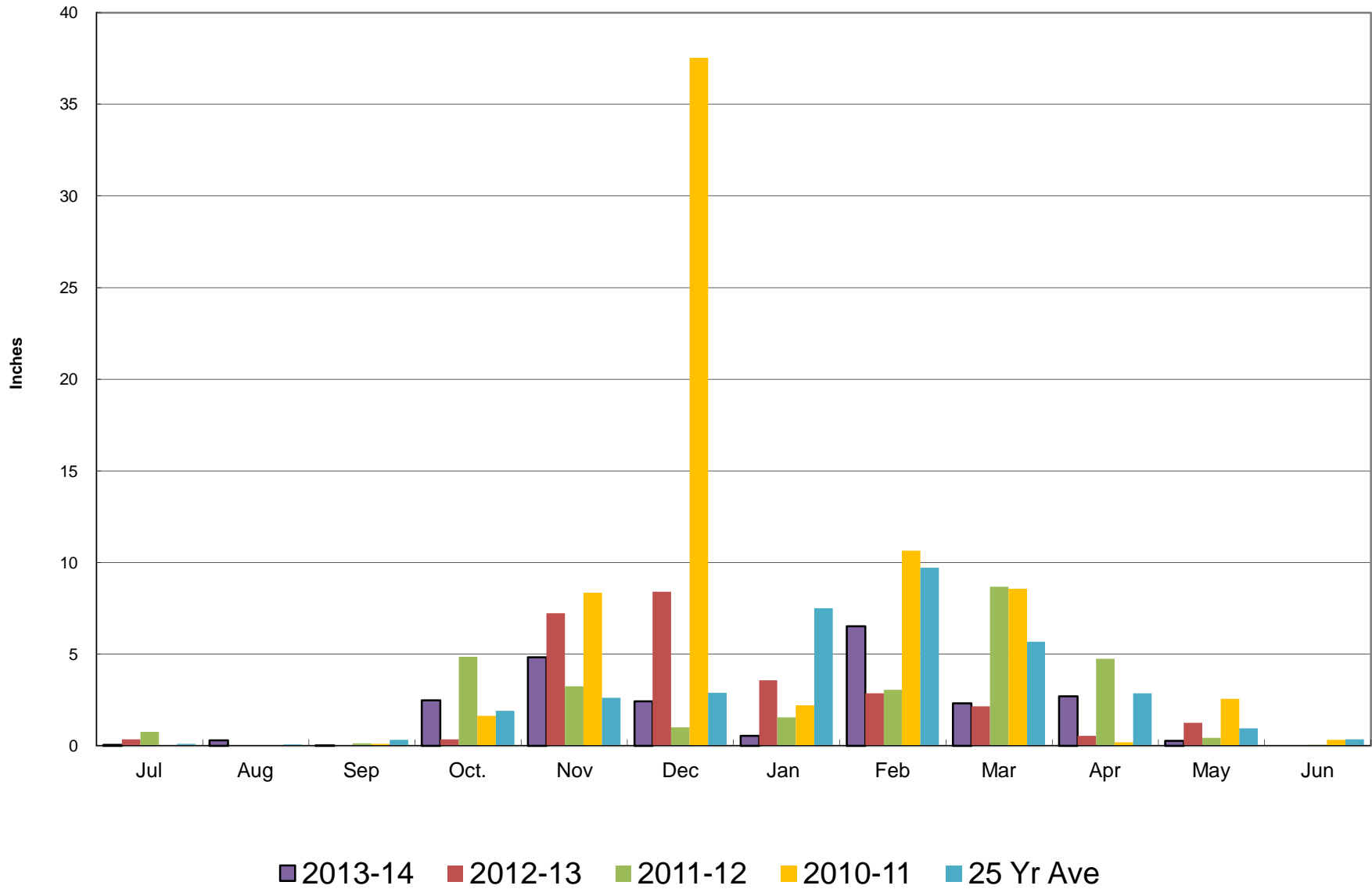
**Total Rainfall  
Last 12 Months**



■ This Year ■ Last Year ■ Normal

# Crestline Village Water District

## Rainfall by Month



# Crestline Village Water District

## Rainfall Cumulative

