

**Crestline Village Water District  
Source of Supply Production Report  
System Loss - Last 13 Months  
In Cubic Feet**

11/10/15

	Oct	Nov	Dec	Jan '15	Feb	Mar	Apr	May	June	July	August	Sept	Oct	Total
<b>Sources of Supply</b>														
Wells	934,638	839,687	859,313	891,181	834,933	1,193,310	1,076,113	1,059,928	943,051	970,810	961,233	732,548	837,185	12,133,930
Purchased Water	1,510,400	1,281,686	1,085,776	1,365,576	964,211	1,002,740	1,012,206	1,046,592	1,406,645	1,592,273	1,674,706	1,733,087	1,212,180	16,888,078
Adjustment to Wells *	0	0	0	0	0	0	0	0	0	0	0	0	0	0
<b>Total Water Supplied</b>	<b>2,445,038</b>	<b>2,121,373</b>	<b>1,945,089</b>	<b>2,256,757</b>	<b>1,799,144</b>	<b>2,196,050</b>	<b>2,088,319</b>	<b>2,106,520</b>	<b>2,349,696</b>	<b>2,563,083</b>	<b>2,635,939</b>	<b>2,465,635</b>	<b>2,049,365</b>	<b>29,022,008</b>
<b>Water Used **</b>														
Metered Accounts														
Crestline Area	1,095,121	950,998	862,215	996,288	808,783	949,063	921,711	948,087	1,059,926	1,101,278	1,154,099	1,047,264	949,866	12,844,699
Lake Gregory Area	1,273,188	1,139,901	954,668	1,034,564	854,838	969,907	963,662	1,026,305	1,020,670	1,248,655	1,189,430	1,332,347	1,042,965	14,051,100
Change in Storage	(59,722)	18,650	(23,836)	36,242	(25,604)	(41,242)	36,728	(64,664)	58,023	(49,826)	(34,387)	98,916	(76,490)	(127,212)
Flushing, System & Other	15,794	14,439	14,773	16,779	14,539	20,228	16,799	16,313	15,442	14,439	17,845	15,739	16,639	209,769
<b>Accounted for Water</b>	<b>2,324,381</b>	<b>2,123,988</b>	<b>1,807,820</b>	<b>2,083,873</b>	<b>1,652,556</b>	<b>1,897,956</b>	<b>1,938,900</b>	<b>1,926,041</b>	<b>2,154,061</b>	<b>2,314,546</b>	<b>2,326,987</b>	<b>2,494,266</b>	<b>1,932,980</b>	<b>26,978,356</b>
<b>System Loss (CF)</b>	120,657	(2,615)	137,269	172,884	146,588	298,094	149,419	180,479	195,635	248,537	308,952	(28,631)	116,385	2,043,652
<b>System Loss (%)</b>	4.9%	-0.1%	7.1%	7.7%	8.1%	13.6%	7.2%	8.6%	8.3%	9.7%	11.7%	-1.2%	5.7%	7.0%
<b>System Loss (GPM)</b>	20.2	(0.4)	24.6	29.0	27.2	48.4	25.9	29.3	33.9	43.0	51.8	(5.0)	20.2	28.9
<b>Month to Month Averaging ***</b>														
<b>System Loss (CF)</b>	60,329	59,021	67,327	155,077	159,736	222,341	223,756	164,949	188,057	222,086	278,744	140,160	43,877	1,985,460
<b>System Loss (%)</b>	2.5%	2.4%	3.5%	7.4%	7.9%	10.9%	10.4%	7.9%	8.4%	9.0%	10.7%	5.3%	2.3%	6.8%
<b>System Loss (GPM)</b>	10.1	9.9	12.1	26.8	28.1	37.8	37.1	27.6	31.6	38.5	47.4	23.4	7.6	28.1
<b>Estimated Uses</b>														
Known leaks - Est. loss	5,791	963	5,063	75	1,155	1,810	5,824	6,497	12,096	6,209	11,278	3,826	6,786	67,373
<b>Total Estimated Uses</b>	<b>5,791</b>	<b>963</b>	<b>5,063</b>	<b>75</b>	<b>1,155</b>	<b>1,810</b>	<b>5,824</b>	<b>6,497</b>	<b>12,096</b>	<b>6,209</b>	<b>11,278</b>	<b>3,826</b>	<b>6,786</b>	<b>67,373</b>
<b>Unaccounted for Water (CF)</b>	114,866	(3,578)	132,206	172,809	145,433	296,284	143,595	173,982	183,539	242,328	297,674	(32,457)	109,599	1,976,279
<b>Unaccounted For (%)</b>	4.7%	-0.2%	6.8%	7.7%	8.1%	13.5%	6.9%	8.3%	7.8%	9.5%	11.3%	-1.3%	5.4%	6.8%
<b>Unaccounted For (GPM)</b>	19.2	(0.6)	23.7	29.0	27.0	48.1	24.9	28.2	31.8	42.0	49.9	(5.6)	19.0	28.0
<b>Number of Days in Period</b>	<b>31</b>	<b>31</b>	<b>29</b>	<b>31</b>	<b>28</b>	<b>32</b>	<b>30</b>	<b>32</b>	<b>30</b>	<b>30</b>	<b>31</b>	<b>30</b>	<b>30</b>	<b>367</b>

**NOTES:**

Estimated - Includes estimated billing period. This month includes estimated consumption. The following billing period will reflect adjustments to actual water used.

\* - Currently there are no Adjustments to Wells being made.

\*\* - Water Used - Metered Accounts is adjusted to the time period in Total Water Supplied

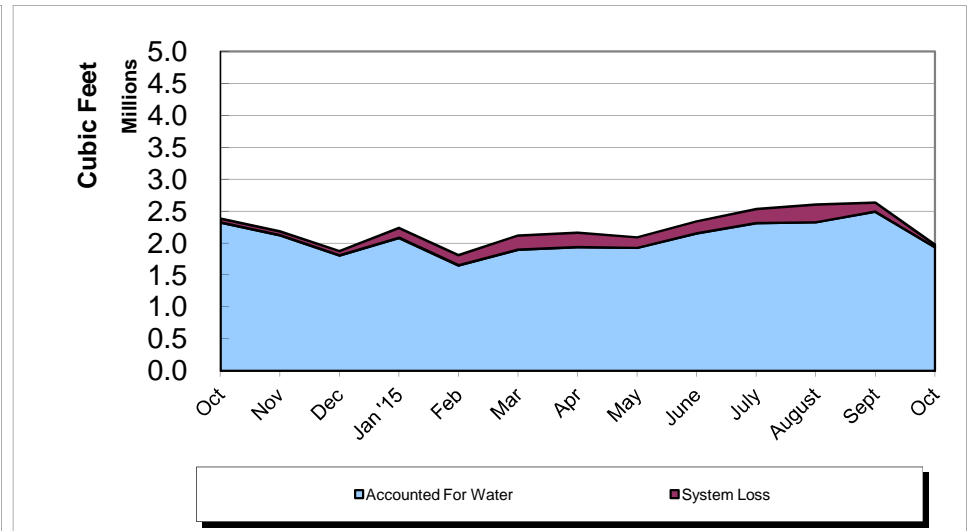
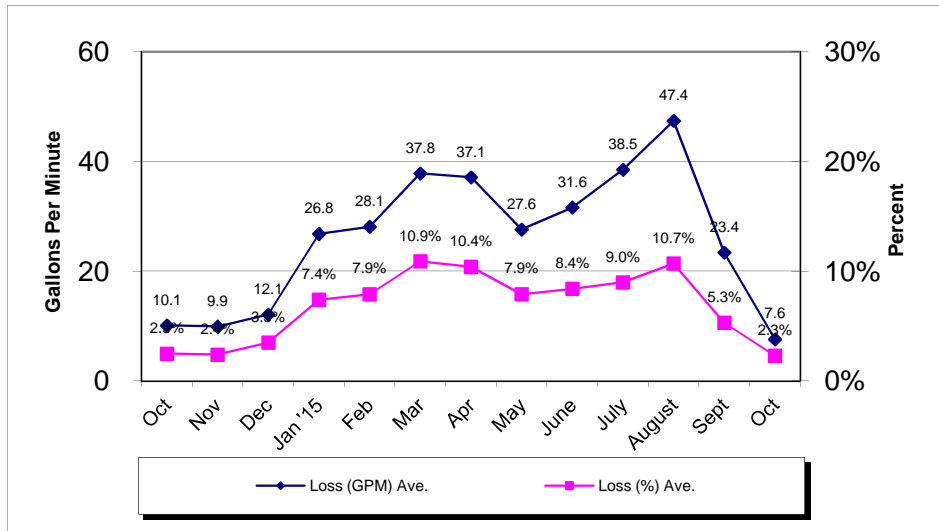
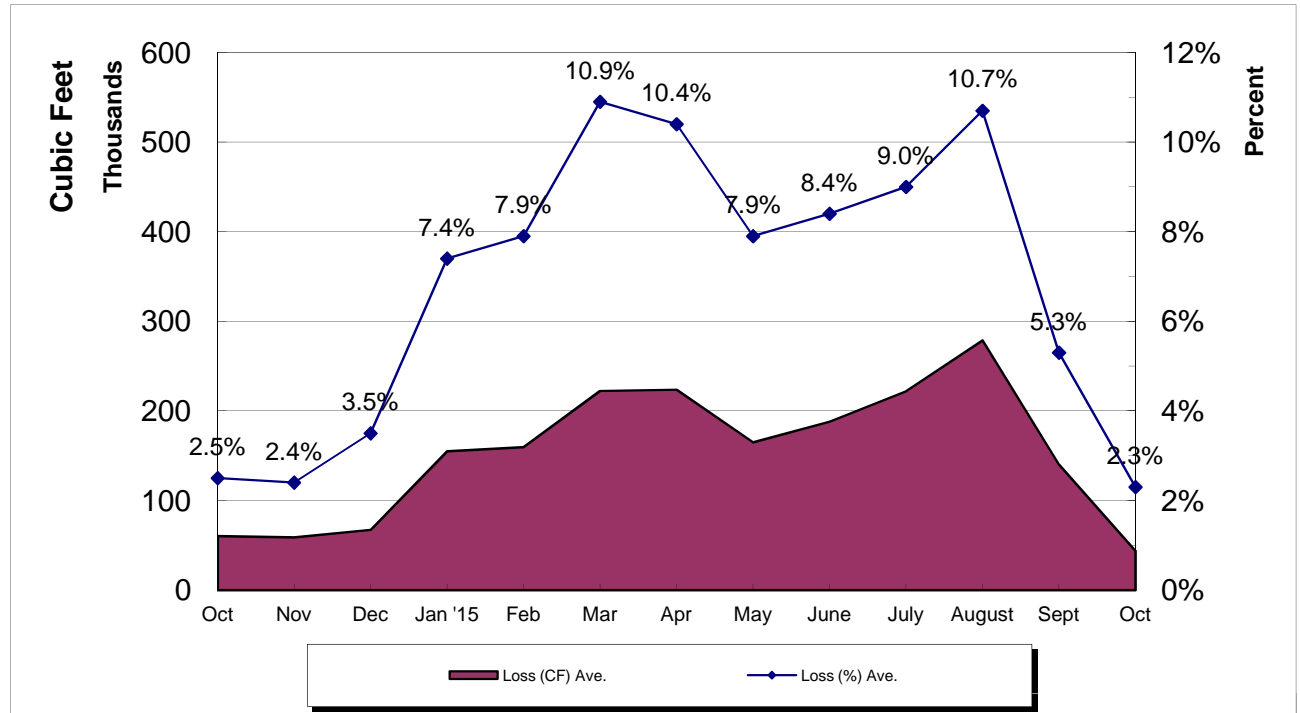
\*\*\* - Month to Month averaging averages the System Loss for each period with the immediately prior period for trending purposes.

System Loss Costs	This Month	Average
Cost of System Loss:	\$1,158	\$4,032
Cost of 5% System Loss:	2,705	2,947
<b>Amount above (below) 5% System Loss</b>	<b>(\$1,547)</b>	<b>\$1,085</b>
Note: Cost is calculated at highest cost (CLAWA Rate: \$2.64/100 c.f.)		

# Crestline Village Water District

## System Loss Last 13 Months

With Month to Month Averaging



**Crestline Village Water District**  
**System Report on: 10/30/15**

**For Month of: October 2015**

Water Storage (Gal)	Capacity	Gallons/ Foot	Level (FT)	Current Storage	% of Capacity
Beacon I & II	385,354	16,754	20.10	336,755	87.39%
Saxon	337,674	14,681	17.80	261,322	77.39%
Pinecrest I & II	2,063,492	54,302	28.80	1,563,898	75.79%
Zurich	380,500	16,910	20.80	351,728	92.44%
Lakeview	1,230,212	27,959	29.20	816,403	66.36%
Old Mill	705,900	27,150	23.00	624,450	88.46%
Barn	444,443	19,753	18.60	367,406	82.67%
Wilson	983,681	33,920	23.00	780,160	79.31%
Chillon	337,674	14,681	17.60	258,386	76.52%
Brookside	748,067	28,772	18.20	523,650	70.00%
Chamois	1,026,532	39,482	22.30	880,449	85.77%
<b>Total</b>	<b>8,643,529</b>		<b>239.40</b>	<b>6,764,607</b>	<b>78.26%</b>

WELLS	Production M-T-D (Cubic Feet)	Status
Altdorf	53,232	On
Pioneer-2	37,606	On
Pioneer-1	26,155	On
Old Mill Springs	0	Off
Maple Springs	1,300	On
Willow Springs	0	Off
Brookside Springs	0	Off
Hillside Springs	4,820	On
Pinecrest 1 & 2	7,630	On
Pinecrest Vertical	88,620	On
Cypress Vertical	123,480	On
Anderson Vertical	900	Off
Wilson Springs 1 & 2	66,926	On
Wilson Vertical	113,100	On
Felsen Vertical	152,920	On
Horst	34,460	On
Jewel 64	65,441	On
Cathcart	17,747	On
Bergschrund	4,468	On
Chamois	0	Off
Chamois Vertical	34,350	On
	0	0
	0	0
	0	0
Lewter	4,030	On
<b>Total</b>	<b>837,185</b>	

C.L.A.W.A.	FLOWS - GPM				Production M-T-D (Cubic Feet)
	Timed	Requested	Variance	% Variance	
CF - Crestline	60	60	0	0.00%	362,701
Mile High 2"	30	30	0	0.00%	193,182
Mile High 4"	0	0	0	0.00%	0
Pinecrest 2"	0	0	0	0.00%	1,618
Pinecrest 4"	150	150	0	0.00%	631,551
Lake Drive 2"	0	0	0	0.00%	0
Lake Drive 4"	0	0	0	0.00%	0
Camp Seely	0	0	0	0.00%	23,128
<b>Total</b>	<b>240</b>	<b>240</b>	<b>0</b>	<b>0.00%</b>	<b>1,212,180</b>

October Purchases	GPM	Cubic Feet	Wells	GPM	Cubic Feet
Last Year M-T-D:	253.1	1,461,754		156.6	904,428
Actual M-T-D:	209.9	1,212,180		145.0	837,185
Over/(Under) Last Year:	(43.2)	(249,574.0)		(11.7)	(67,243.0)

Total	GPM	Cubic Feet
Last Year M-T-D:	409.7	2,366,182
Actual M-T-D:	354.8	2,049,365
Over/(Under) Last Year:	(54.9)	(316,817.0)

**Crestline Village Water District  
Source of Supply Production Report  
Cubic Feet  
Last 13 Months**

11/10/15

<b>Source Name</b>	<b>October</b>	<b>November</b>	<b>December</b>	<b>January '15</b>	<b>February</b>	<b>March</b>	<b>April</b>	<b>May</b>	<b>June</b>	<b>July</b>	<b>August</b>	<b>September</b>	<b>October</b>	<b>Last 12 Months</b>	<b>13 Months</b>
<b>Division 10</b>															
Altdorf	61,843	60,998	62,013	61,686	52,584	65,113	59,329	62,534	55,514	57,920	56,285	54,015	53,232	701,223	763,066
Pioneer #2	45,813	44,633	41,726	43,660	37,542	45,747	39,207	43,330	38,646	40,711	39,978	38,439	37,606	491,225	537,038
Pioneer #1	33,762	32,630	46,662	37,187	30,585	37,474	30,898	31,038	27,345	28,606	28,202	26,813	26,155	383,595	417,357
Old Mill Springs	16,620	16,590	16,320	15,900	14,360	18,050	15,260	15,320	14,520	14,220	12,640	5,860	0	159,040	175,660
Maple Springs	27,505	24,018	25,369	19,959	15,990	15,431	14,846	9,536	8,425	7,530	8,280	2,745	1,300	153,429	180,934
Willow Springs	3,760	3,030	3,860	3,350	2,640	3,140	1,950	1,080	310	120	0	0	0	19,480	23,240
Brookside Springs	8,930	8,150	11,000	9,710	7,960	10,150	8,710	9,350	7,880	7,340	8,020	0	0	88,270	97,200
Hillside Springs	8,550	8,100	7,210	7,670	6,350	7,580	6,750	6,930	5,970	6,050	5,740	5,230	4,820	78,400	86,950
Pinecrest	22,760	19,020	21,720	21,970	16,500	17,370	16,810	17,240	14,220	13,450	11,340	8,990	7,630	186,260	209,020
Pinecrest Vertical	1,620	0	0	0	43,070	222,090	177,100	171,630	121,800	134,370	129,720	117,560	88,620	1,205,960	1,207,580
Cypress Vertical	89,030	89,140	65,690	87,820	78,370	87,680	85,390	91,520	83,080	87,410	78,150	7,270	123,480	965,000	1,054,030
Anderson Vertical	33,400	31,800	29,100	65,200	23,000	56,100	83,500	23,700	54,200	48,000	44,700	12,600	900	472,800	506,200
Division 10 Totals	353,593	338,109	330,670	374,112	328,951	585,925	539,750	483,208	431,910	445,727	423,055	279,522	343,743	4,904,682	5,258,275
<b>Division 20</b>															
Wilson Springs #1 & 2	97,356	95,251	85,172	72,451	80,158	90,102	80,236	83,274	70,981	73,134	74,192	67,937	66,926	939,814	1,037,170
Wilson Vertical	147,300	78,900	94,400	74,500	106,300	130,200	123,000	127,300	113,100	115,800	118,900	65,100	113,100	1,260,600	1,407,900
Felsen Vertical	138,940	134,540	169,620	181,970	157,320	189,000	157,720	179,070	162,870	163,600	172,150	154,910	152,920	1,975,690	2,114,630
Horst	48,300	46,300	42,100	44,200	37,600	45,100	40,000	41,500	36,700	37,800	37,334	35,152	34,460	478,246	526,546
Jewell No. 64	72,530	72,576	69,431	71,974	62,578	78,239	68,198	75,214	65,280	69,801	69,751	67,354	65,441	835,837	908,367
Cathcart	20,000	18,900	17,200	18,300	15,600	19,100	17,100	17,900	15,800	16,600	18,862	18,517	17,747	211,626	231,626
Bergschrund	13,174	12,095	10,606	10,959	9,140	10,675	9,354	9,266	7,611	7,303	6,290	5,197	4,468	102,964	116,138
Chamois	0	0	0	0	0	0	0	0	0	0	0	0	0	0	0
Chamois Vertical	38,970	38,600	35,880	38,290	33,380	40,240	36,480	38,590	34,690	36,760	36,420	34,870	34,350	438,550	477,520
Valle	0	0	0	0	0	0	0	0	0	0	0	0	0	0	0
Chillon 64 (stand-by)	0	0	0	0	0	0	0	0	0	0	0	0	0	0	0
Government	0	0	0	0	0	0	0	0	0	0	0	0	0	0	0
Lewter	4,475	4,416	4,234	4,425	3,906	4,729	4,275	4,606	4,109	4,285	4,279	3,989	4,030	51,283	55,758
Division 20 Totals	581,045	501,578	528,643	517,069	505,982	607,385	536,363	576,720	511,141	525,083	538,178	453,026	493,442	6,294,610	6,875,655
<b>Total District Sources</b>	<b>934,638</b>	<b>839,687</b>	<b>859,313</b>	<b>891,181</b>	<b>834,933</b>	<b>1,193,310</b>	<b>1,076,113</b>	<b>1,059,928</b>	<b>943,051</b>	<b>970,810</b>	<b>961,233</b>	<b>732,548</b>	<b>837,185</b>	<b>11,199,292</b>	<b>12,133,930</b>
<b>C.L.A.W.A.</b>															
Crest Forest 6"	361,631	301,872	279,813	351,471	259,893	316,711	289,037	330,615	303,209	392,380	402,005	437,299	362,701	4,027,006	4,388,637
Mile High Park 2"	0	232,487	163,717	173,864	156,243	191,644	217,607	168,209	182,741	251,230	241,150	217,580	193,182	2,389,654	2,389,654
Mile High Park 4"	269,251	0	33,289	0	0	0	0	0	0	13,904	0	27,807	0	75,000	344,251
Pinecrest 2"	0	0	0	0	1,283	0	46,471	506,324	89,813	0	0	0	1,618	645,509	645,509
Pinecrest 4"	1,031,417	716,578	579,679	822,995	523,396	473,529	416,711	0	713,369	857,353	985,695	973,396	631,551	7,694,252	8,725,669
Lake Drive 2"	0	0	0	0	0	0	0	0	0	0	0	0	0	0	0
Lake Drive 4"	0	0	0	0	0	401	0	0	58,155	0	0	0	0	58,556	58,556
Camp Seely	41,176	30,749	29,278	17,246	23,396	20,455	42,380	41,444	59,358	77,406	45,856	77,005	23,128	487,701	528,877
<b>C.L.A.W.A. Totals</b>	<b>1,703,475</b>	<b>1,281,686</b>	<b>1,085,776</b>	<b>1,365,576</b>	<b>964,211</b>	<b>1,002,740</b>	<b>1,012,206</b>	<b>1,046,592</b>	<b>1,406,645</b>	<b>1,592,273</b>	<b>1,674,706</b>	<b>1,733,087</b>	<b>1,212,180</b>	<b>15,377,678</b>	<b>17,081,153</b>
<b>Grand Totals</b>	<b>2,638,113</b>	<b>2,121,373</b>	<b>1,945,089</b>	<b>2,256,757</b>	<b>1,799,144</b>	<b>2,196,050</b>	<b>2,088,319</b>	<b>2,106,520</b>	<b>2,349,696</b>	<b>2,563,083</b>	<b>2,635,939</b>	<b>2,465,635</b>	<b>2,049,365</b>	<b>26,576,970</b>	<b>29,215,083</b>

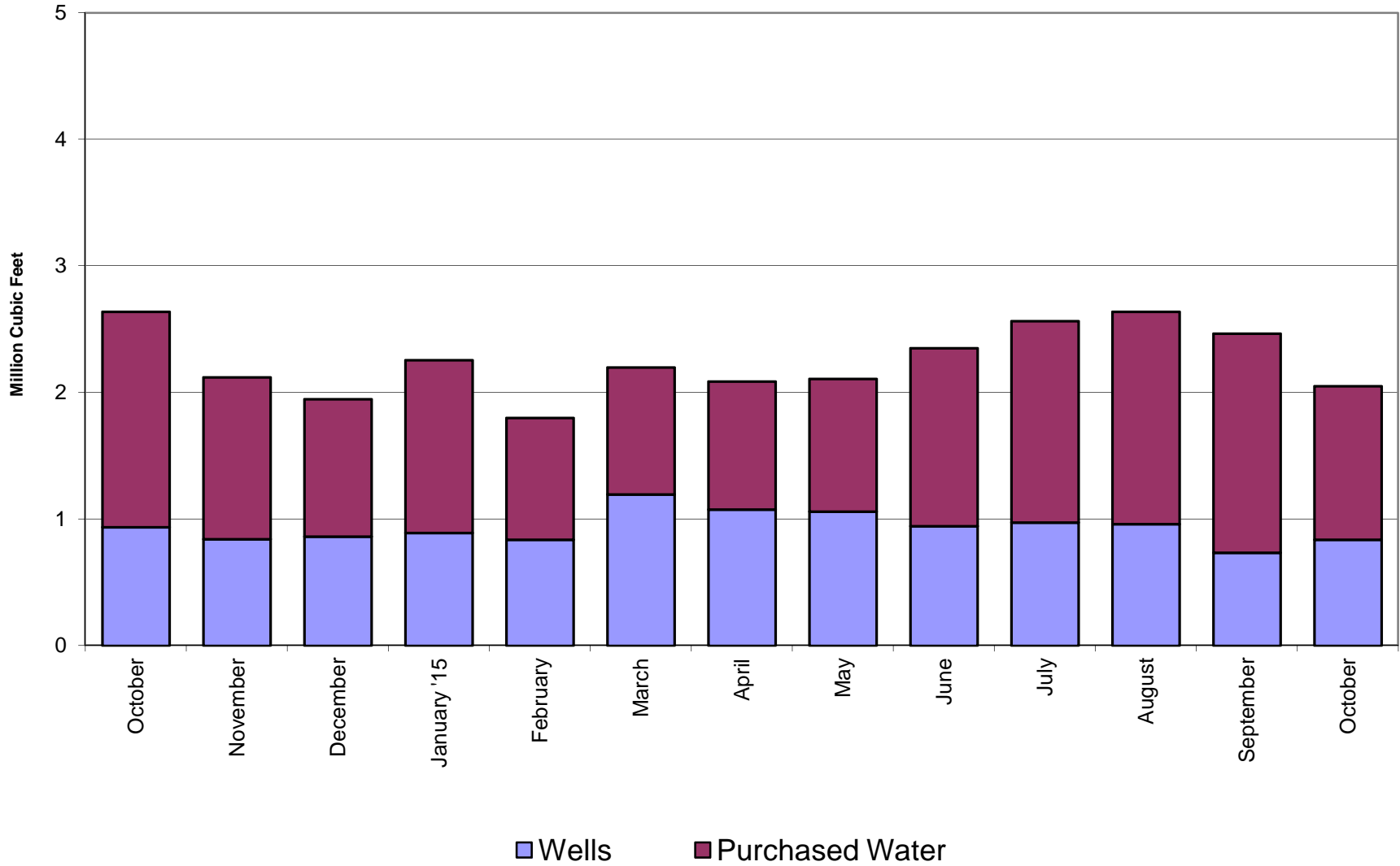
**Crestline Village Water District  
Source of Supply Production Report  
Cubic Feet  
Last 13 Months**

11/10/15

<u>Source Name</u>	<u>October</u>	<u>November</u>	<u>December</u>	<u>January '15</u>	<u>February</u>	<u>March</u>	<u>April</u>	<u>May</u>	<u>June</u>	<u>July</u>	<u>August</u>	<u>September</u>	<u>October</u>	<u>Last 12 Months</u>	<u>13 Months</u>
<b>District Sources</b>															
Division 10	353,593	338,109	330,670	374,112	328,951	585,925	539,750	483,208	431,910	445,727	423,055	279,522	343,743	4,904,682	5,258,275
Division 20	581,045	501,578	528,643	517,069	505,982	607,385	536,363	576,720	511,141	525,083	538,178	453,026	493,442	6,294,610	6,875,655
<b>Total</b>	<b>934,638</b>	<b>839,687</b>	<b>859,313</b>	<b>891,181</b>	<b>834,933</b>	<b>1,193,310</b>	<b>1,076,113</b>	<b>1,059,928</b>	<b>943,051</b>	<b>970,810</b>	<b>961,233</b>	<b>732,548</b>	<b>837,185</b>	<b>11,199,292</b>	<b>12,133,930</b>
Division 10	37.83%	40.27%	38.48%	41.98%	39.40%	49.10%	50.16%	45.59%	45.80%	45.91%	44.01%	38.16%	41.06%	43.79%	43.34%
Division 20	62.17%	59.73%	61.52%	58.02%	60.60%	50.90%	49.84%	54.41%	54.20%	54.09%	55.99%	61.84%	58.94%	56.21%	56.66%
<b>Total</b>	<b>100.00%</b>	<b>100.00%</b>	<b>100.00%</b>	<b>100.00%</b>	<b>100.00%</b>	<b>100.00%</b>	<b>100.00%</b>	<b>100.00%</b>	<b>100.00%</b>	<b>100.00%</b>	<b>100.00%</b>	<b>100.00%</b>	<b>100.00%</b>	<b>100.00%</b>	<b>100.00%</b>
<b>All Sources</b>															
District Sources	934,638	839,687	859,313	891,181	834,933	1,193,310	1,076,113	1,059,928	943,051	970,810	961,233	732,548	837,185	11,199,292	12,133,930
C.L.A.W.A.	1,703,475	1,281,686	1,085,776	1,365,576	964,211	1,002,740	1,012,206	1,046,592	1,406,645	1,592,273	1,674,706	1,733,087	1,212,180	15,377,678	17,081,153
<b>Total Sources</b>	<b>2,638,113</b>	<b>2,121,373</b>	<b>1,945,089</b>	<b>2,256,757</b>	<b>1,799,144</b>	<b>2,196,050</b>	<b>2,088,319</b>	<b>2,106,520</b>	<b>2,349,696</b>	<b>2,563,083</b>	<b>2,635,939</b>	<b>2,465,635</b>	<b>2,049,365</b>	<b>26,576,970</b>	<b>29,215,083</b>
District Sources	35.43%	39.58%	44.18%	39.49%	46.41%	54.34%	51.53%	50.32%	40.14%	37.88%	36.47%	29.71%	40.85%	42.14%	41.53%
C.L.A.W.A.	64.57%	60.42%	55.82%	60.51%	53.59%	45.66%	48.47%	49.68%	59.86%	62.12%	63.53%	70.29%	59.15%	57.86%	58.47%
<b>Total Sources</b>	<b>100.00%</b>	<b>100.00%</b>	<b>100.00%</b>	<b>100.00%</b>	<b>100.00%</b>	<b>100.00%</b>	<b>100.00%</b>	<b>100.00%</b>	<b>100.00%</b>	<b>100.00%</b>	<b>100.00%</b>	<b>100.00%</b>	<b>100.00%</b>	<b>100.00%</b>	<b>100.00%</b>

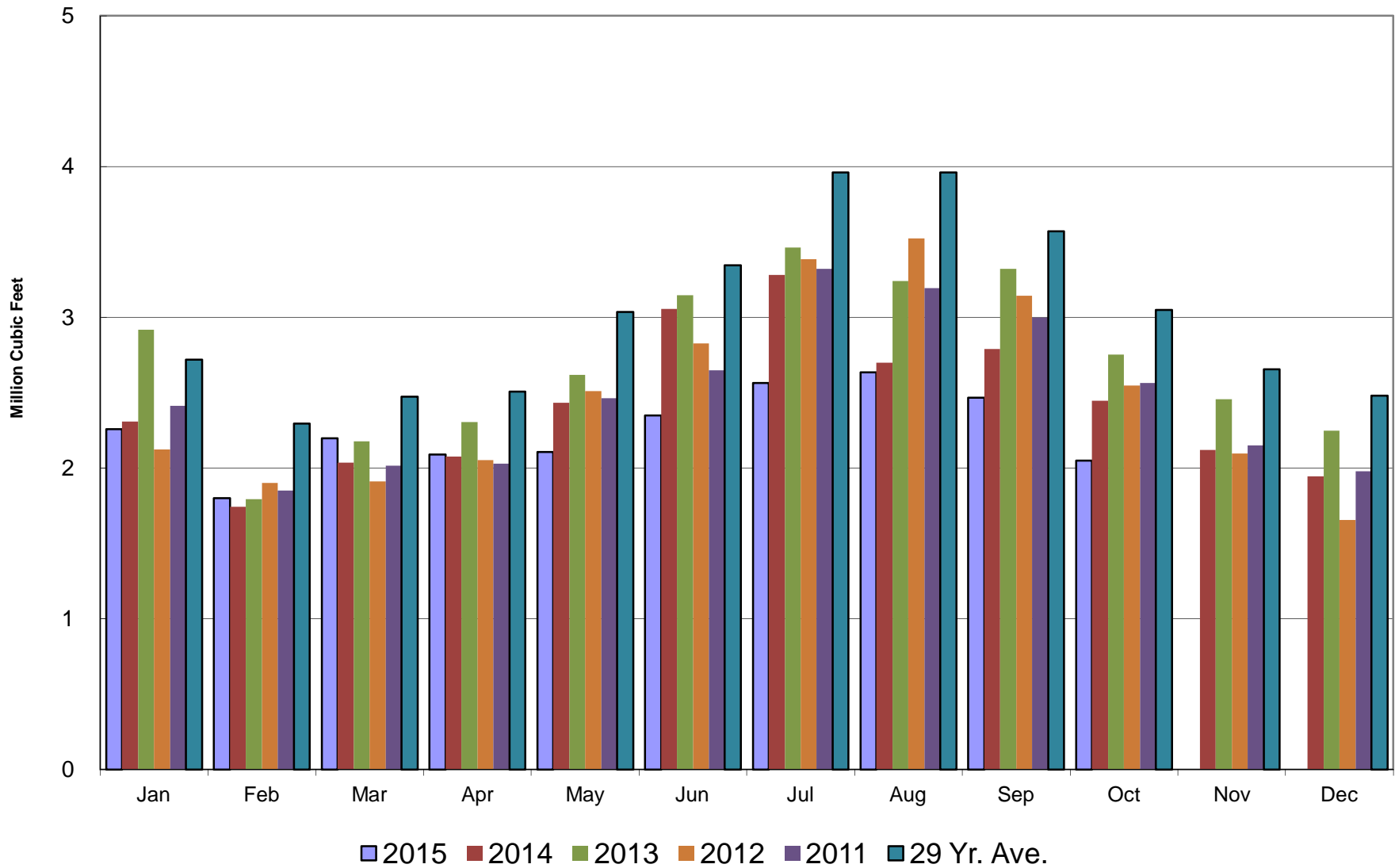
# Crestline Village Water District

## Water Sources - Last 13 Months



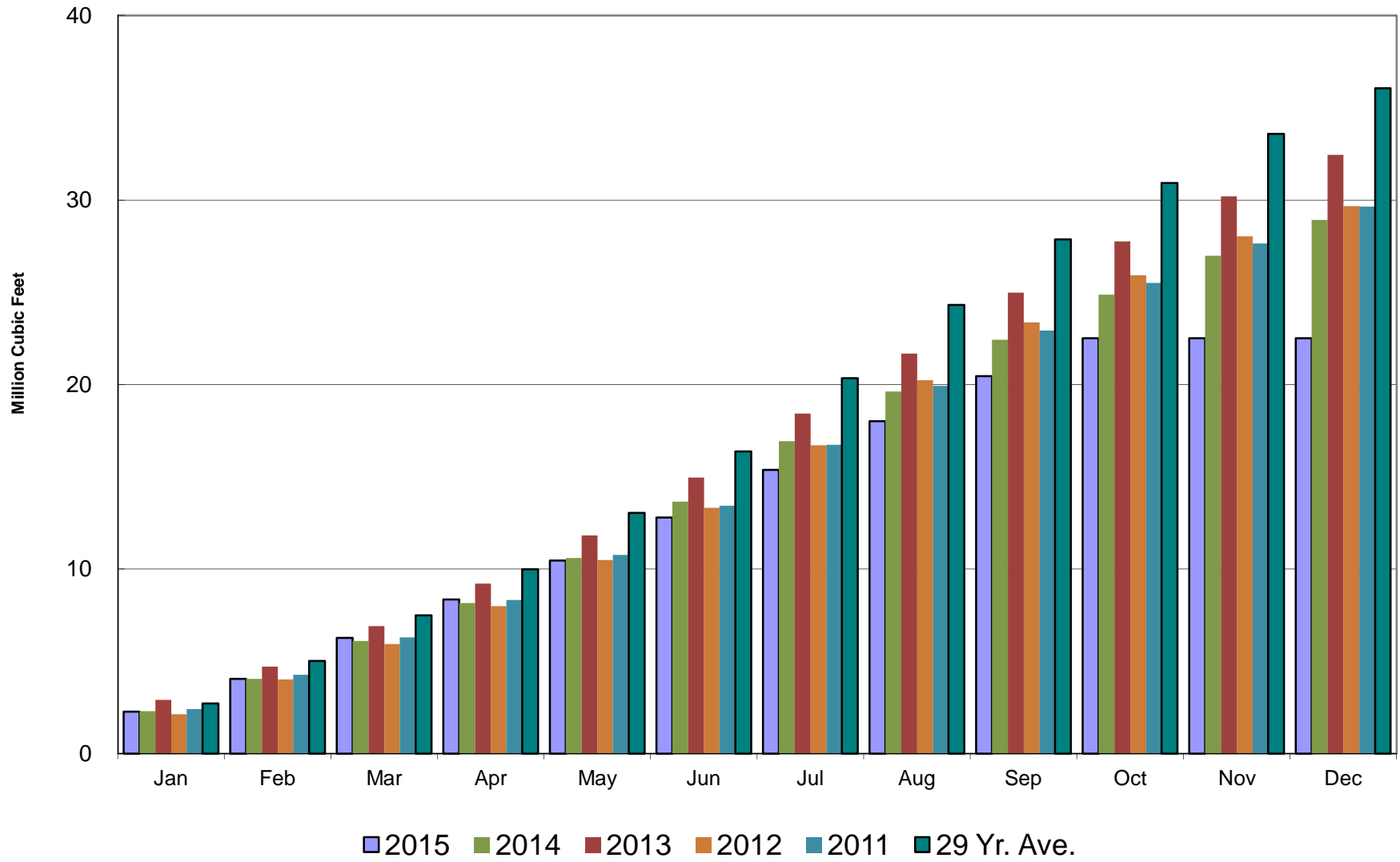
# Crestline Village Water District

## Total Production by Month



# Crestline Village Water District

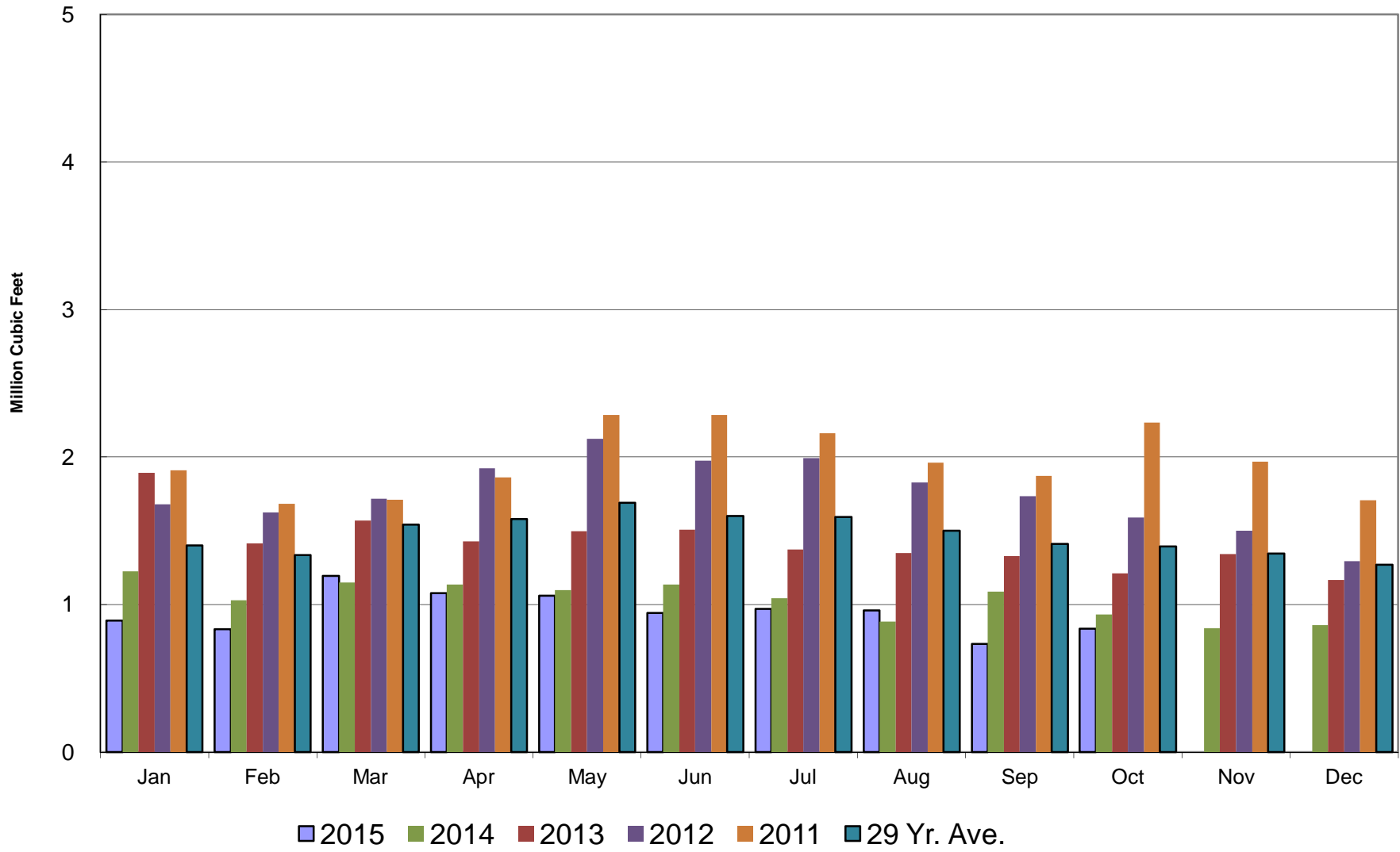
## Total Production Cumulative





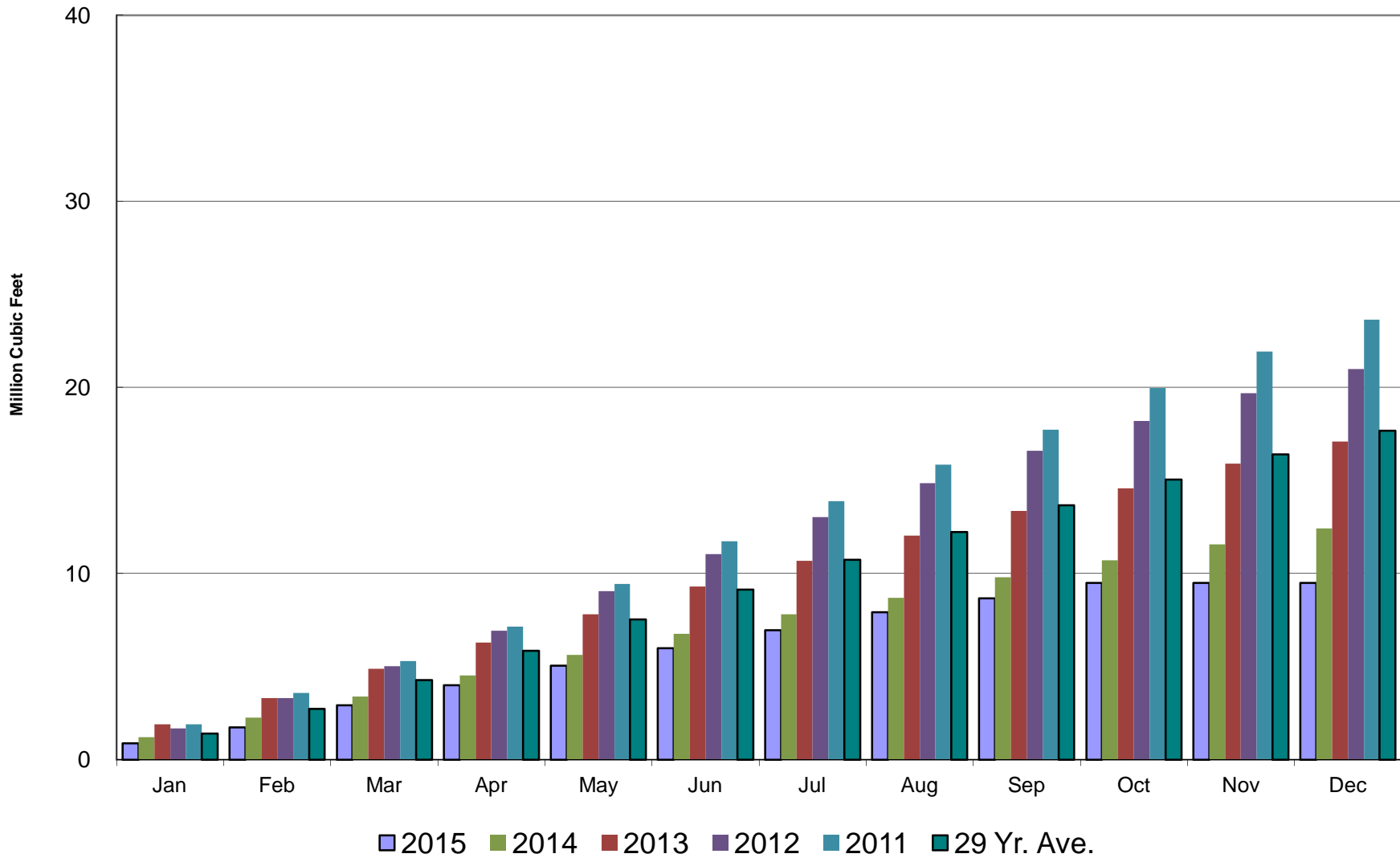
# Crestline Village Water District

## Well Production by Month



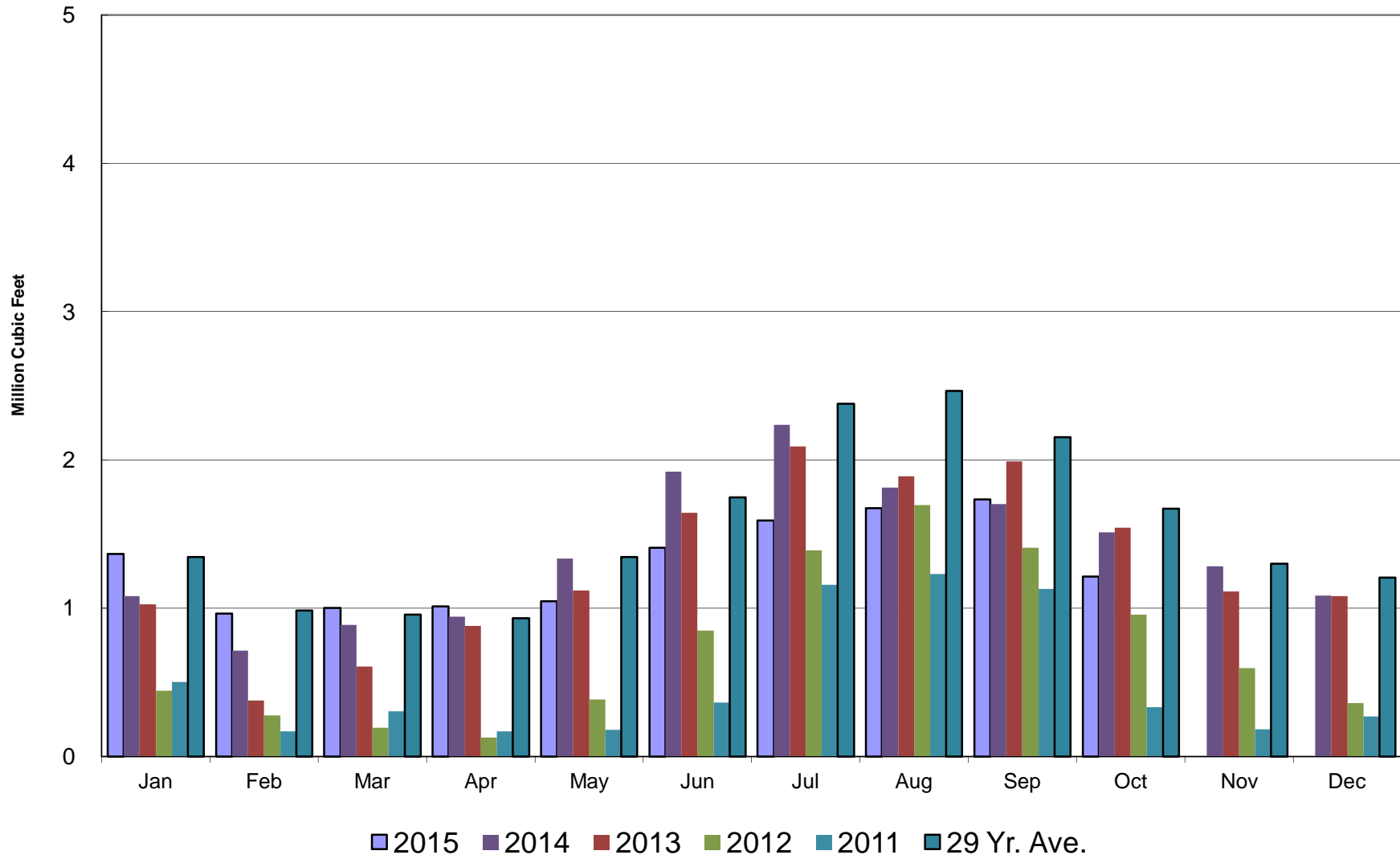
# Crestline Village Water District

## Well Production Cumulative



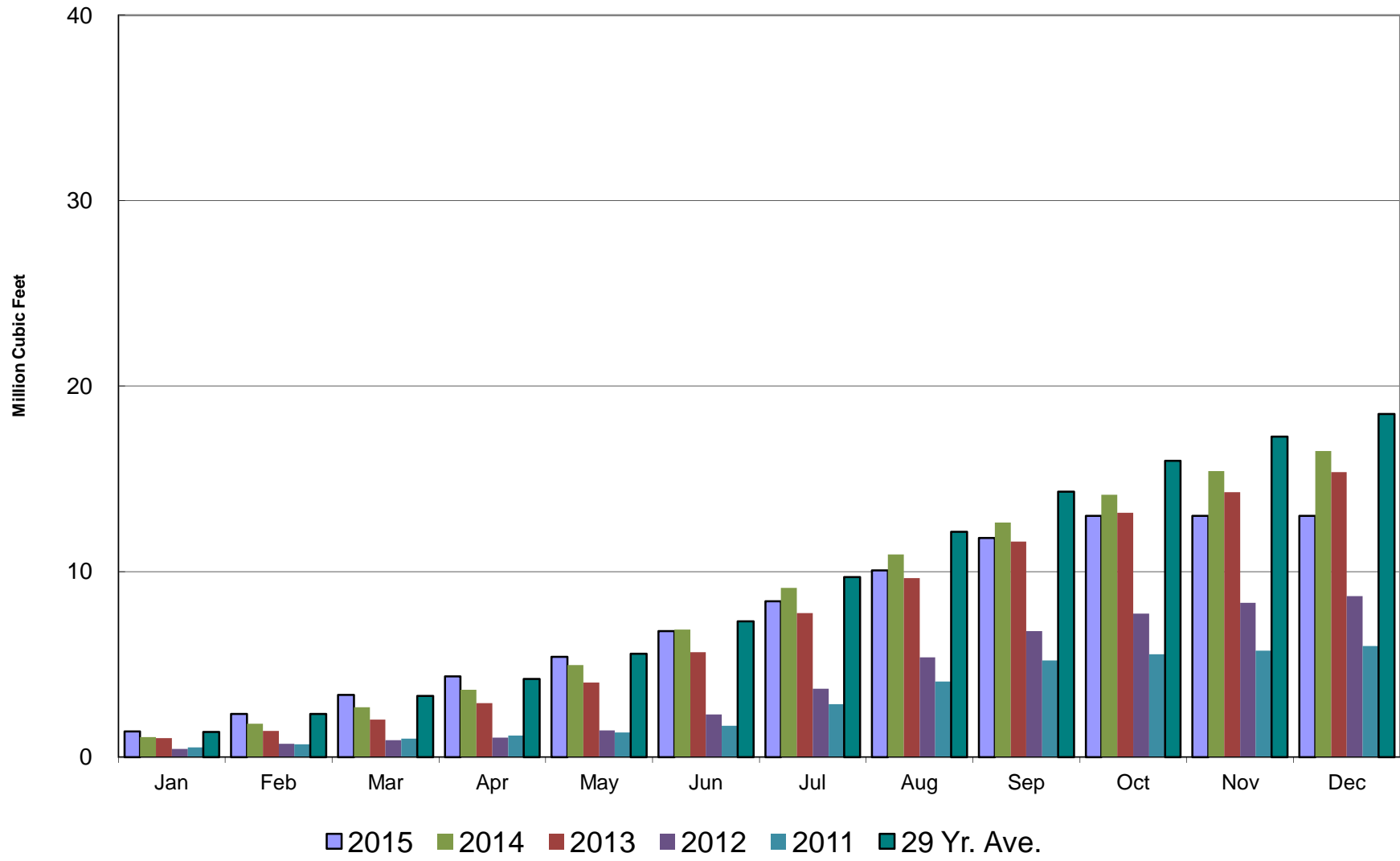
# Crestline Village Water District

## Purchased Water by Month



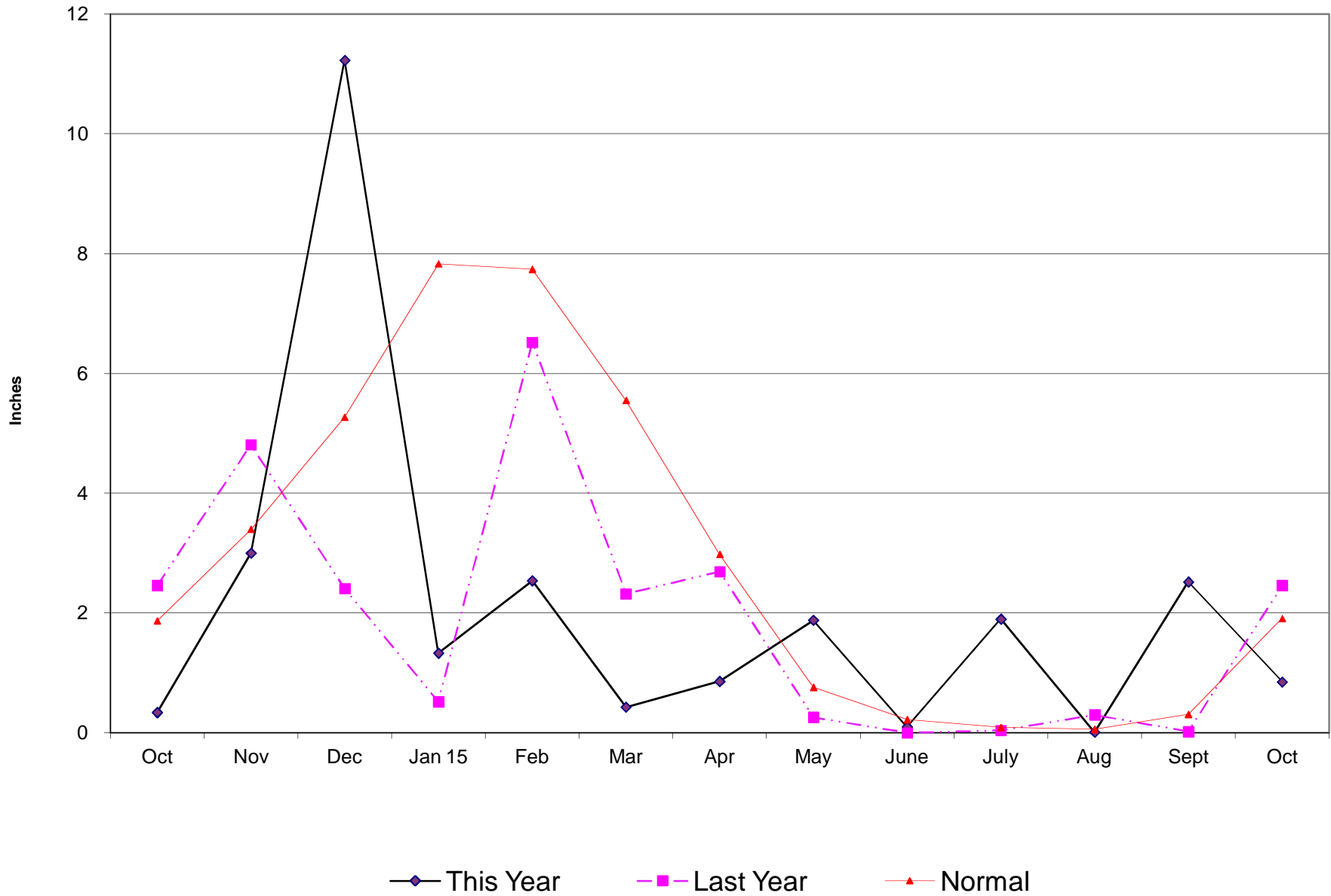
# Crestline Village Water District

## Purchased Water Cumulative



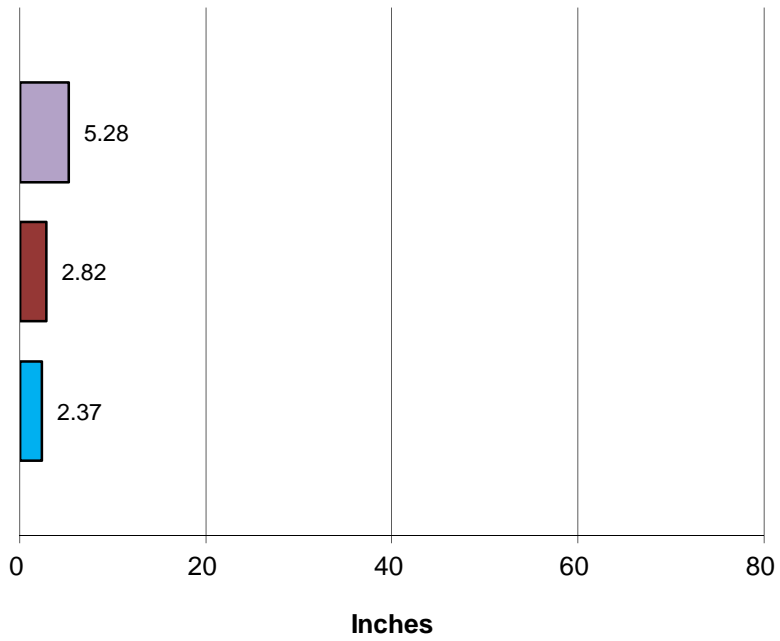
# Crestline Village Water District

## Rainfall - Last 13 Months



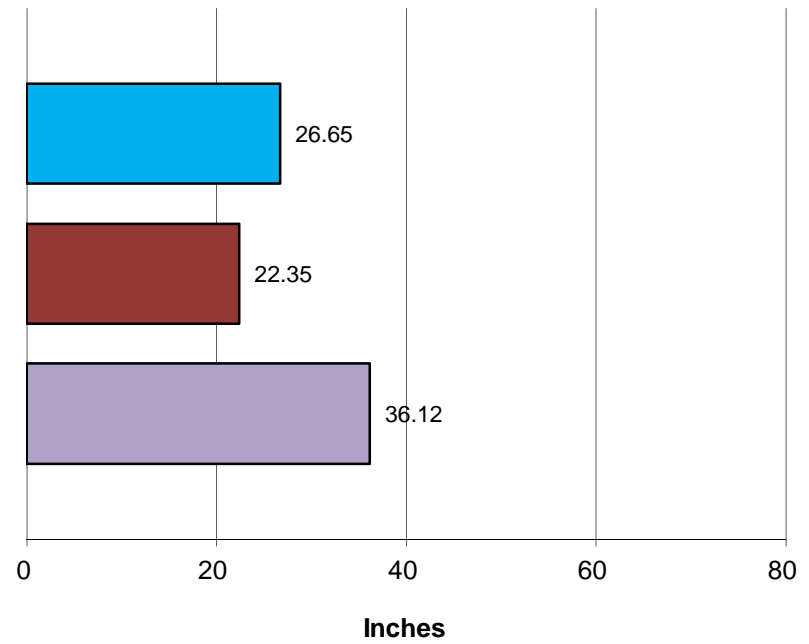
# Crestline Village Water District

## Total Rainfall July 1, 2015 to Beginning of Current Month



■ This Year ■ Last Year ■ Normal

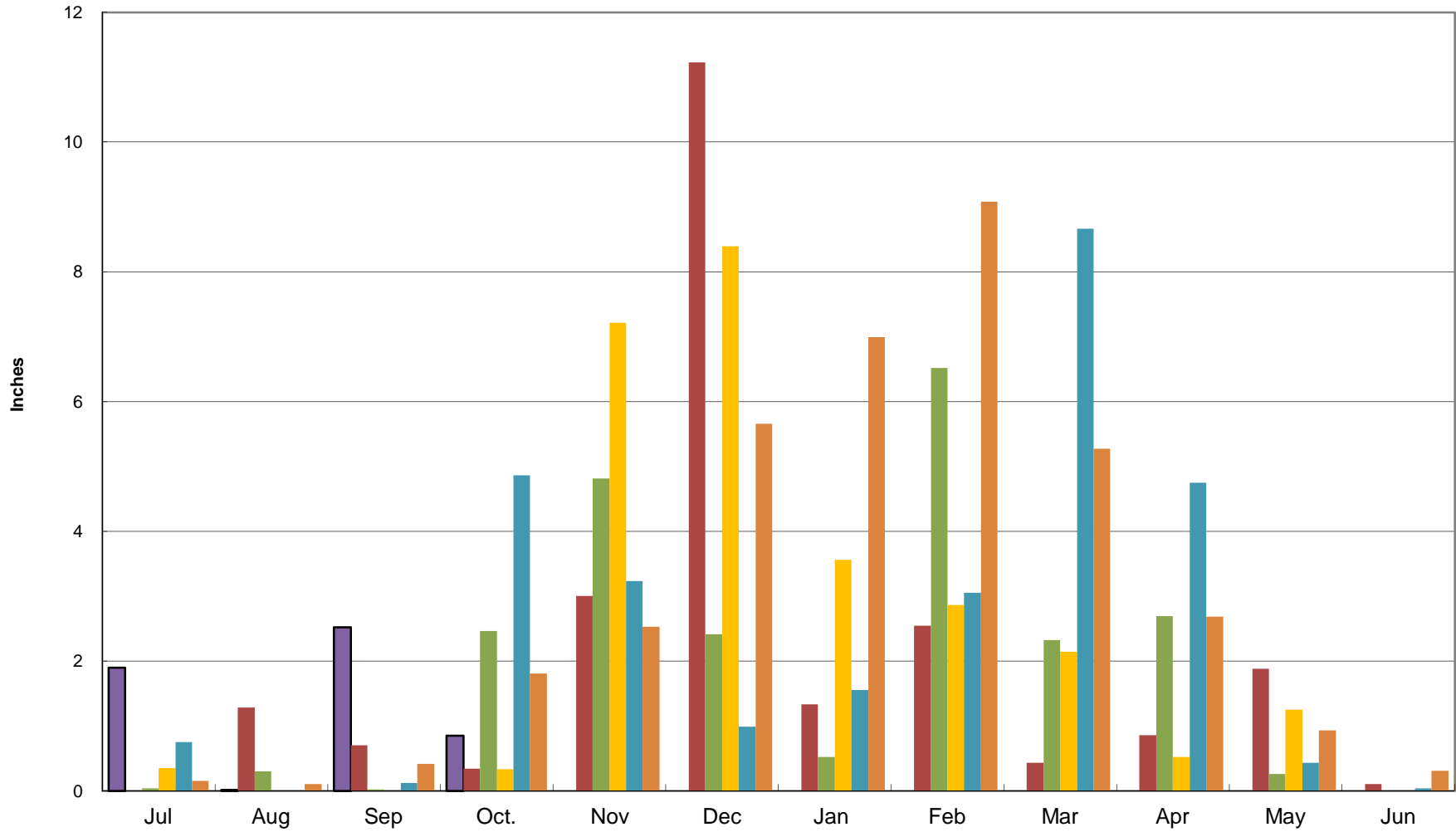
## Total Rainfall Last 12 Months



■ This Year ■ Last Year ■ Normal

# Crestline Village Water District

## Rainfall by Month



# Crestline Village Water District

■ 2015-16 
 ■ 2014-15 
 ■ 2013-14 
 ■ 2012-13 
 ■ 2011-12 
 ■ 27 Yr Ave

## Rainfall Cumulative

