

**Crestline Village Water District  
Source of Supply Production Report  
System Loss - Last 13 Months  
In Cubic Feet**

11/21/19

	Oct	Nov	Dec	Jan '19	Feb	Mar	Apr	May	June	July	Aug	Sept	Oct	Total
<b>Sources of Supply</b>														
Wells	1,017,344	647,576	514,242	1,090,018	1,367,259	1,592,464	2,084,690	1,916,178	1,779,411	2,000,356	1,850,570	1,733,973	1,880,618	19,474,699
Purchased Water	1,794,720	1,696,003	1,322,968	1,382,554	735,802	512,005	365,749	347,887	723,395	1,148,623	1,315,362	1,162,554	720,040	13,227,662
Adjustment to Wells *	0	0	0	0	0	0	0	0	0	0	0	0	0	0
<b>Total Water Supplied</b>	<b>2,812,064</b>	<b>2,343,579</b>	<b>1,837,210</b>	<b>2,472,572</b>	<b>2,103,061</b>	<b>2,104,469</b>	<b>2,450,439</b>	<b>2,264,065</b>	<b>2,502,806</b>	<b>3,148,979</b>	<b>3,165,932</b>	<b>2,896,527</b>	<b>2,600,658</b>	<b>32,702,361</b>
<b>Water Used **</b>														
Metered Accounts	Estimated	Estimated												
Crestline Area	1,110,762	946,253	811,903	1,062,017	941,370	892,895	1,010,773	941,028	948,267	1,300,573	1,342,258	1,400,683	1,246,800	13,955,582
Lake Gregory Area	1,371,614	1,150,726	922,514	1,233,622	960,810	968,188	1,045,541	1,104,013	1,069,690	1,464,980	1,411,839	1,434,700	1,240,310	15,378,547
Change in Storage	(26,874)	21,586	(5,521)	(1,686)	(25,298)	(4,370)	17,247	19,940	27,725	(12,156)	(5,495)	15,748	(52,443)	(31,597)
Flushing, System & Other	26,097	28,303	14,439	14,439	14,439	14,947	29,877	18,885	16,246	16,246	15,408	14,484	27,122	250,933
<b>Accounted for Water</b>	<b>2,481,599</b>	<b>2,146,868</b>	<b>1,743,335</b>	<b>2,308,392</b>	<b>1,891,321</b>	<b>1,871,660</b>	<b>2,103,438</b>	<b>2,083,866</b>	<b>2,061,928</b>	<b>2,769,643</b>	<b>2,764,010</b>	<b>2,865,615</b>	<b>2,461,789</b>	<b>29,553,465</b>
<b>System Loss (CF)</b>	330,465	196,711	93,875	164,180	211,740	232,809	347,001	180,199	440,878	379,336	401,922	30,912	138,869	3,148,896
<b>System Loss (%)</b>	11.8%	8.4%	5.1%	6.6%	10.1%	11.1%	14.2%	8.0%	17.6%	12.0%	12.7%	1.1%	5.3%	9.6%
<b>System Loss (GPM)</b>	52.0	34.1	18.8	24.4	37.9	41.7	56.3	30.2	81.8	59.7	69.6	5.2	23.3	44.9
<b>Month to Month Averaging ***</b>														
<b>System Loss (CF)</b>	165,232	263,588	145,293	129,028	187,960	222,275	289,905	263,600	310,539	410,107	390,629	216,417	84,891	3,079,464
<b>System Loss (%)</b>	5.9%	10.1%	6.8%	5.9%	8.4%	10.6%	12.6%	11.1%	12.8%	14.8%	12.4%	6.9%	3.2%	9.4%
<b>System Loss (GPM)</b>	26.0	43.0	26.4	21.6	31.1	39.8	49.0	43.3	56.0	70.8	64.7	37.4	14.2	43.9
<b>Estimated Uses</b>														
Known leaks - Est. loss	38,225	568	2,589	622	4,084	3,265	2,880	3,891	4,589	2,880	16,789	3,599	4,420	88,401
<b>Total Estimated Uses</b>	<b>38,225</b>	<b>568</b>	<b>2,589</b>	<b>622</b>	<b>4,084</b>	<b>3,265</b>	<b>2,880</b>	<b>3,891</b>	<b>4,589</b>	<b>2,880</b>	<b>16,789</b>	<b>3,599</b>	<b>4,420</b>	<b>88,401</b>
<b>Unaccounted for Water (CF)</b>	292,240	196,143	91,286	163,558	207,656	229,544	344,121	176,308	436,289	376,456	385,133	27,313	134,449	3,060,495
<b>Unaccounted For (%)</b>	10.4%	8.4%	5.0%	6.6%	9.9%	10.9%	14.0%	7.8%	17.4%	12.0%	12.2%	0.9%	5.2%	9.4%
<b>Unaccounted For (GPM)</b>	46.0	34.0	18.2	24.3	37.2	41.1	55.9	29.5	80.9	59.3	66.7	4.6	22.5	43.7
<b>Number of Days in Period</b>	33	30	26	35	29	29	32	31	28	33	30	31	31	364

**NOTES:**

Estimated - Includes estimated billing period. This month includes estimated consumption. The following billing period will reflect adjustments to actual water used.

\* - Currently there are no Adjustments to Wells being made.

\*\* - Water Used - Metered Accounts is adjusted to the time period in Total Water Supplied

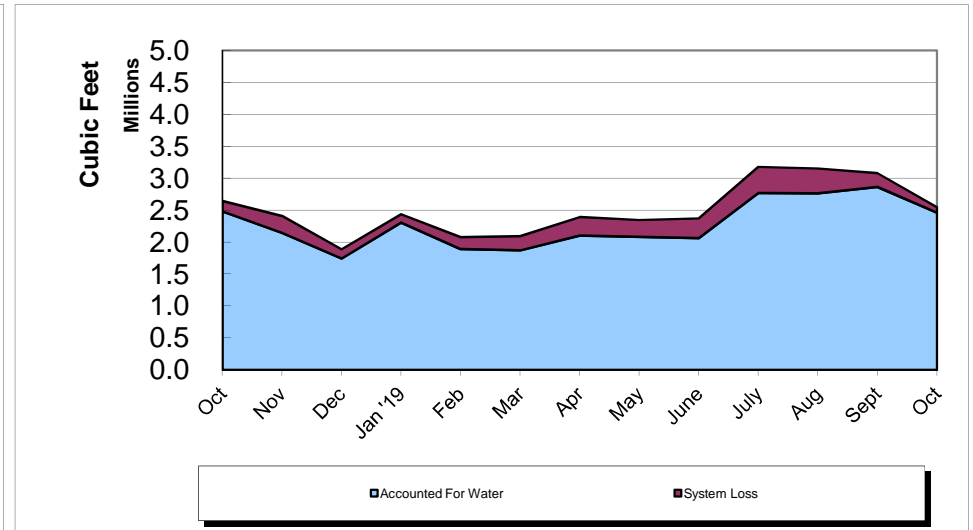
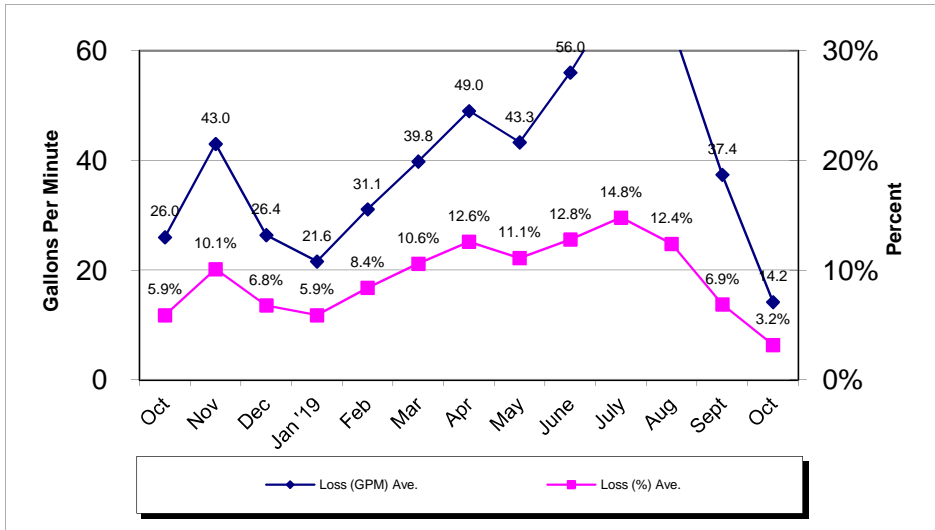
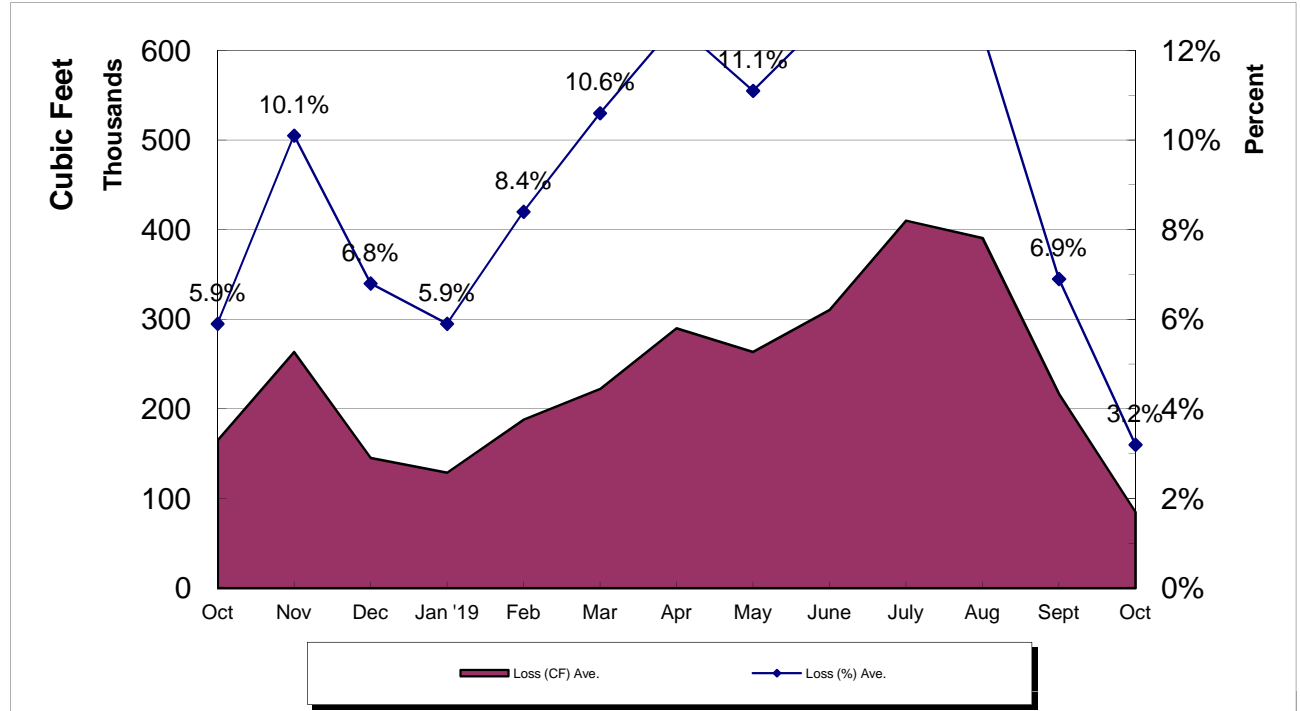
\*\*\* - Month to Month averaging averages the System Loss for each period with the immediately prior period for trending purposes.

System Loss Costs	This Month	Average
Cost of System Loss:	\$2,241	\$6,254
Cost of 5% System Loss:	3,433	3,321
<b>Amount above (below) 5% System Loss</b>	<b>(\$1,192)</b>	<b>\$2,933</b>
Note: Cost is calculated at highest cost (CLAWA Rate: \$2.64/100 c.f.)		

# Crestline Village Water District

## System Loss Last 13 Months

With Month to Month Averaging



**Crestline Village Water District**  
**System Report on: 10/31/19**

Water Storage (Gal)	Capacity	Gallons/ Foot	Level (FT)	Current Storage	% of Capacity
Beacon I & II	385,354	16,752	20.03	335,543	87.07%
Saxon	337,674	14,681	17.08	250,751	74.26%
Pinecrest I & II	2,063,492	54,302	26.63	1,446,062	70.08%
Zurich	380,500	18,789	19.53	366,949	96.44%
Lakeview	1,230,212	27,955	36.12	1,009,735	82.08%
Old Mill	705,900	27,151	22.81	619,314	87.73%
Barn	444,443	19,752	17.54	346,450	77.95%
Wilson	983,681	33,915	25.41	861,780	87.61%
Chillon	337,674	14,679	17.37	254,974	75.51%
Brookside	748,067	28,772	18.28	525,952	70.31%
Chamois	1,026,532	39,482	24.62	972,047	94.69%
<b>Total</b>	<b>8,643,529</b>		<b>245.42</b>	<b>6,989,557</b>	<b>80.86%</b>

**For Month of: September 2019**

WELLS	Production M-T-D (Cubic Feet)	Status
Altdorf	85,025	On
Pioneer-2	53,002	On
Pioneer-1	63,551	On
Old Mill Springs	76,506	On
Maple Springs	92,290	On
Willow Springs	76,130	On
Brookside Springs	33,240	On
Hillside Springs	0	Off
Pinecrest 1 & 2	157,931	On
Pinecrest Vertical	206,157	On
Cypress Vertical	4,250	Off
Anderson Vertical	153,191	On
Wilson Springs 1 & 2	189,633	On
Wilson Vertical	171,684	On
Felsen Vertical	171,787	On
Horst	141,419	On
Jewel 64	80,716	On
Cathcart	33,536	On
Bergschrund	37,360	On
Chamois	0	Off
Chamois Vertical	53,210	On
	0	0
	0	0
	0	0
Lewter	0	Off
<b>Total</b>	<b>1,880,618</b>	

C.L.A.W.A.	FLOWS - GPM				Production M-T-D (Cubic Feet)
	Timed	Requested	Variance	% Variance	
CF - Crestline	47	50	(3)	-6.00%	215,775
Mile High 2"	30	30	0	0.00%	163,356
Mile High 4"	0	0	0	0.00%	0
Pinecrest 2"	0	0	0	0.00%	0
Pinecrest 4"	70	110	(40)	-36.36%	340,909
Lake Drive 2"	0	0	0	0.00%	0
Lake Drive 4"	0	0	0	0.00%	0
Camp Seely	0	0	0	0.00%	0
<b>Total</b>	<b>147</b>	<b>190</b>	<b>(43)</b>	<b>-22.63%</b>	<b>720,040</b>

October Purchases	GPM	Cubic Feet	Wells	GPM	Cubic Feet
Last Year M-T-D:	209.9	1,252,665		144.9	864,751
Actual M-T-D:	120.7	720,040		315.1	1,880,618
Over/(Under) Last Year:	(89.3)	(532,625.0)		170.2	1,015,867.0

Total	GPM	Cubic Feet
Last Year M-T-D:	354.8	2,117,416
Actual M-T-D:	435.8	2,600,658
Over/(Under) Last Year:	81.0	483,242.0

**Crestline Village Water District  
Source of Supply Production Report  
Cubic Feet  
Last 13 Months**

11/21/19

<b>Source Name</b>	<b>October '18</b>	<b>November</b>	<b>December</b>	<b>January '19</b>	<b>February</b>	<b>March</b>	<b>April</b>	<b>May</b>	<b>June</b>	<b>July</b>	<b>August</b>	<b>September</b>	<b>October</b>	<b>Last 12 Months</b>	<b>13 Months</b>
<b>Division 10</b>															
Altdorf	57,499	52,454	47,759	126,854	74,147	84,122	135,433	106,117	95,034	110,795	82,955	66,124	85,025	1,066,819	1,124,318
Pioneer #2	34,522	34,254	29,535	69,148	36,529	41,330	54,527	53,461	47,897	56,812	51,594	53,115	53,002	581,204	615,726
Pioneer #1	28,677	26,174	26,207	83,753	43,705	78,743	65,777	59,978	57,997	55,460	61,312	60,335	63,551	682,992	711,669
Old Mill Springs	19,720	17,030	14,640	41,440	157,130	160,400	161,030	95,600	81,690	77,620	38,960	710	76,506	922,756	942,476
Maple Springs	12,083	7,992	8,878	16,633	60,981	63,579	112,862	95,089	81,843	96,864	87,918	76,131	92,290	801,060	813,143
Willow Springs	10,640	9,350	7,290	20,510	72,610	114,640	129,020	113,180	96,050	105,860	90,630	85,690	76,130	920,960	931,600
Brookside Springs	8,950	7,710	6,960	23,930	68,590	96,930	94,400	73,920	15,360	85,470	46,070	38,890	33,240	591,470	600,420
Hillside Springs	5,170	4,440	3,600	8,310	22,470	13,160	0	0	0	0	0	0	0	51,980	57,150
Pinecrest	36,060	29,420	23,660	59,270	73,100	87,250	61,600	53,350	33,700	29,330	25,650	2,869	157,931	637,130	673,190
Pinecrest Vertical	91,620	32,520	0	0	0	0	184,601	224,054	203,051	241,416	210,285	188,037	206,157	1,490,121	1,581,741
Cypress Vertical	93,080	6,610	0	36,630	80,750	0	0	0	0	78,500	145,210	134,150	4,250	486,100	579,180
Anderson Vertical	56,114	40,626	37,476	93,129	93,506	130,777	168,244	160,814	146,982	171,651	150,424	157,146	153,191	1,503,966	1,560,080
Division 10 Totals	454,135	268,580	206,005	579,607	783,518	870,931	1,167,494	1,035,563	859,604	1,109,778	991,008	863,197	1,001,273	9,736,558	10,190,693
<b>Division 20</b>															
Wilson Springs #1 & 2	79,147	72,247	60,379	142,223	95,329	144,060	194,650	193,324	179,547	222,598	199,414	199,875	189,633	1,893,279	1,972,426
Wilson Vertical	134,176	119,521	105,890	32,394	119,562	123,600	171,753	167,427	142,610	132,012	165,480	154,713	171,684	1,606,646	1,740,822
Felsen Vertical	159,450	19,987	0	0	143,972	142,093	180,968	175,083	159,480	187,446	169,819	173,107	171,787	1,523,742	1,683,192
Horst	44,707	38,440	32,102	74,894	44,247	92,240	138,846	142,356	130,505	155,235	126,761	148,327	141,419	1,265,372	1,310,079
Jewell No. 64	66,035	59,146	51,645	124,560	76,085	90,327	90,056	83,396	235,156	86,306	76,683	65,197	80,716	1,119,273	1,185,308
Cathcart	20,012	17,587	14,716	36,042	29,173	41,344	43,429	36,838	30,811	36,070	29,349	35,441	33,536	384,336	404,348
Bergschrund	7,452	5,838	4,385	10,838	29,053	42,449	48,474	47,111	41,698	47,841	39,496	40,466	37,360	395,009	402,461
Chamois	0	0	0	0	0	0	0	0	0	0	0	0	0	0	0
Chamois Vertical	52,230	46,230	39,120	89,460	46,320	45,420	49,020	35,080	0	23,070	52,560	53,650	53,210	533,140	585,370
Valle	0	0	0	0	0	0	0	0	0	0	0	0	0	0	0
Chillon 64 (stand-by)	0	0	0	0	0	0	0	0	0	0	0	0	0	0	0
Government	0	0	0	0	0	0	0	0	0	0	0	0	0	0	0
Lewter	0	0	0	0	0	0	0	0	0	0	0	0	0	0	0
Division 20 Totals	563,209	378,996	308,237	510,411	583,741	721,533	917,196	880,615	919,807	890,578	859,562	870,776	879,345	8,720,797	9,284,006
<b>Total District Sources</b>	<b>1,017,344</b>	<b>647,576</b>	<b>514,242</b>	<b>1,090,018</b>	<b>1,367,259</b>	<b>1,592,464</b>	<b>2,084,690</b>	<b>1,916,178</b>	<b>1,779,411</b>	<b>2,000,356</b>	<b>1,850,570</b>	<b>1,733,973</b>	<b>1,880,618</b>	<b>18,457,355</b>	<b>19,474,699</b>
<b>C.L.A.W.A.</b>															
Crest Forest 6"	465,508	347,861	299,599	409,759	113,235	95,187	20,187	20,187	0	0	0	299,465	215,775	1,821,255	2,286,763
Mile High Park 2"	304,211	239,853	204,786	273,463	49,973	43,182	0	0	0	0	0	0	163,356	974,613	1,278,824
Mile High Park 4"	0	0	0	0	0	0	0	0	170,588	249,064	249,064	327,807	0	996,523	996,523
Pinecrest 2"	0	0	0	0	0	137,807	261,070	261,070	0	0	0	107	0	660,054	660,054
Pinecrest 4"	853,610	1,108,289	818,583	699,332	572,594	235,829	0	0	527,807	706,016	706,016	472,995	340,909	6,188,370	7,041,980
Lake Drive 2"	0	0	0	0	0	0	0	0	0	141,003	141,003	32,233	0	314,239	314,239
Lake Drive 4"	60,428	0	0	0	0	0	0	0	0	0	0	0	0	0	60,428
Camp Seely	110,963	0	0	0	0	0	84,492	84,492	25,000	52,540	52,540	29,947	0	329,011	439,974
<b>C.L.A.W.A. Totals</b>	<b>1,794,720</b>	<b>1,696,003</b>	<b>1,322,968</b>	<b>1,382,554</b>	<b>735,802</b>	<b>512,005</b>	<b>365,749</b>	<b>365,749</b>	<b>723,395</b>	<b>1,148,623</b>	<b>1,148,623</b>	<b>1,162,554</b>	<b>720,040</b>	<b>11,284,065</b>	<b>13,078,785</b>
<b>Grand Totals</b>	<b>2,812,064</b>	<b>2,343,579</b>	<b>1,837,210</b>	<b>2,472,572</b>	<b>2,103,061</b>	<b>2,104,469</b>	<b>2,450,439</b>	<b>2,281,927</b>	<b>2,502,806</b>	<b>3,148,979</b>	<b>2,999,193</b>	<b>2,896,527</b>	<b>2,600,658</b>	<b>29,741,420</b>	<b>32,553,484</b>

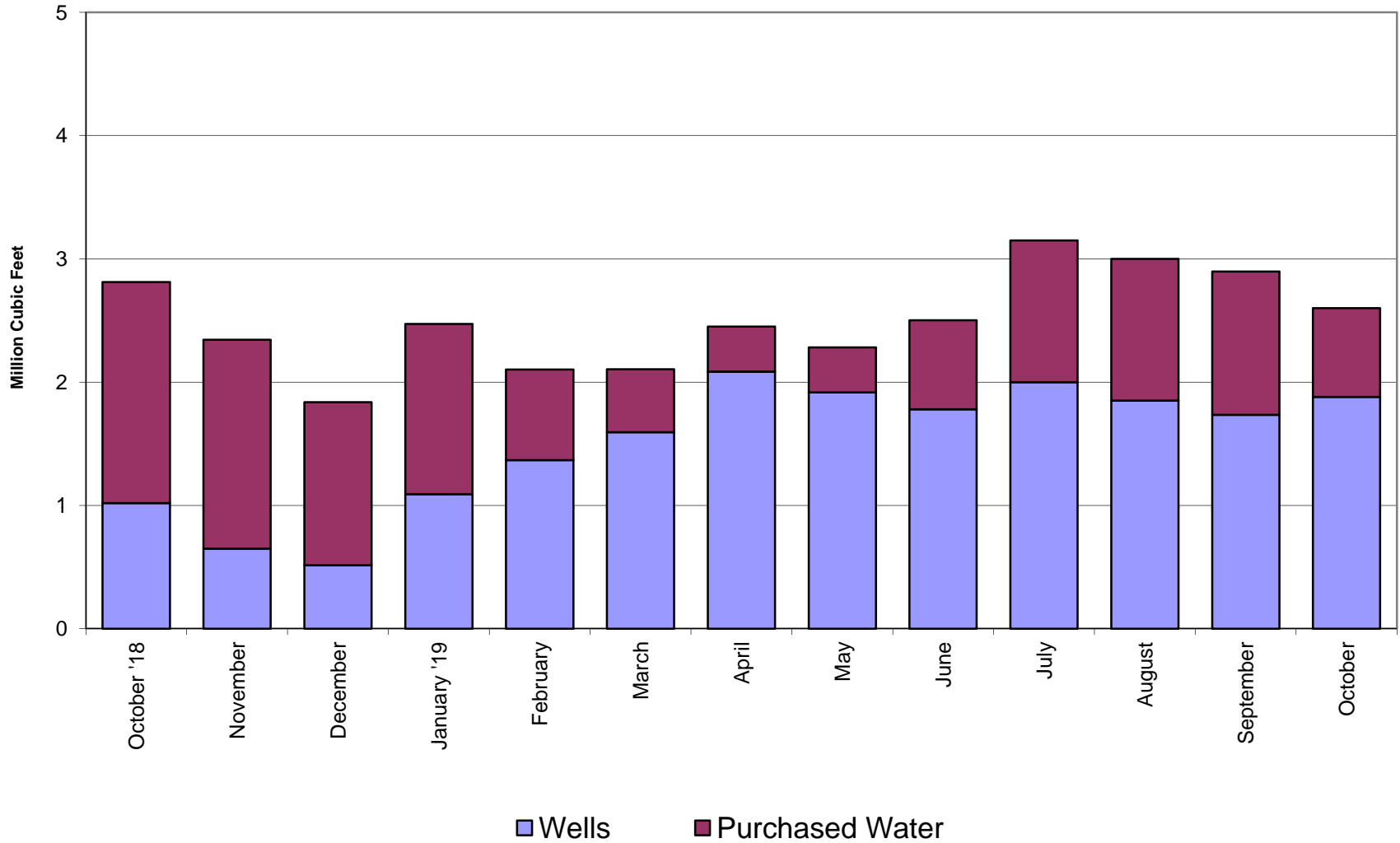
**Crestline Village Water District  
Source of Supply Production Report  
Cubic Feet  
Last 13 Months**

11/21/19

<u>Source Name</u>	<u>October '18</u>	<u>November</u>	<u>December</u>	<u>January '19</u>	<u>February</u>	<u>March</u>	<u>April</u>	<u>May</u>	<u>June</u>	<u>July</u>	<u>August</u>	<u>September</u>	<u>October</u>	<u>Last 12 Months</u>	<u>13 Months</u>
<b>District Sources</b>															
Division 10	454,135	268,580	206,005	579,607	783,518	870,931	1,167,494	1,035,563	859,604	1,109,778	991,008	863,197	1,001,273	9,736,558	10,190,693
Division 20	563,209	378,996	308,237	510,411	583,741	721,533	917,196	880,615	919,807	890,578	859,562	870,776	879,345	8,720,797	9,284,006
<b>Total</b>	<b>1,017,344</b>	<b>647,576</b>	<b>514,242</b>	<b>1,090,018</b>	<b>1,367,259</b>	<b>1,592,464</b>	<b>2,084,690</b>	<b>1,916,178</b>	<b>1,779,411</b>	<b>2,000,356</b>	<b>1,850,570</b>	<b>1,733,973</b>	<b>1,880,618</b>	<b>18,457,355</b>	<b>19,474,699</b>
Division 10	44.64%	41.47%	40.06%	53.17%	57.31%	54.69%	56.00%	54.04%	48.31%	55.48%	53.55%	49.78%	53.24%	52.75%	52.33%
Division 20	55.36%	58.53%	59.94%	46.83%	42.69%	45.31%	44.00%	45.96%	51.69%	44.52%	46.45%	50.22%	46.76%	47.25%	47.67%
<b>Total</b>	<b>100.00%</b>	<b>100.00%</b>	<b>100.00%</b>	<b>100.00%</b>	<b>100.00%</b>	<b>100.00%</b>	<b>100.00%</b>	<b>100.00%</b>	<b>100.00%</b>	<b>100.00%</b>	<b>100.00%</b>	<b>100.00%</b>	<b>100.00%</b>	<b>100.00%</b>	<b>100.00%</b>
<b>All Sources</b>															
District Sources	1,017,344	647,576	514,242	1,090,018	1,367,259	1,592,464	2,084,690	1,916,178	1,779,411	2,000,356	1,850,570	1,733,973	1,880,618	18,457,355	19,474,699
C.L.A.W.A.	1,794,720	1,696,003	1,322,968	1,382,554	735,802	512,005	365,749	365,749	723,395	1,148,623	1,148,623	1,162,554	720,040	11,284,065	13,078,785
<b>Total Sources</b>	<b>2,812,064</b>	<b>2,343,579</b>	<b>1,837,210</b>	<b>2,472,572</b>	<b>2,103,061</b>	<b>2,104,469</b>	<b>2,450,439</b>	<b>2,281,927</b>	<b>2,502,806</b>	<b>3,148,979</b>	<b>2,999,193</b>	<b>2,896,527</b>	<b>2,600,658</b>	<b>29,741,420</b>	<b>32,553,484</b>
District Sources	36.18%	27.63%	27.99%	44.08%	65.01%	75.67%	85.07%	83.97%	71.10%	63.52%	61.70%	59.86%	72.31%	62.06%	59.82%
C.L.A.W.A.	63.82%	72.37%	72.01%	55.92%	34.99%	24.33%	14.93%	16.03%	28.90%	36.48%	38.30%	40.14%	27.69%	37.94%	40.18%
<b>Total Sources</b>	<b>100.00%</b>	<b>100.00%</b>	<b>100.00%</b>	<b>100.00%</b>	<b>100.00%</b>	<b>100.00%</b>	<b>100.00%</b>	<b>100.00%</b>	<b>100.00%</b>	<b>100.00%</b>	<b>100.00%</b>	<b>100.00%</b>	<b>100.00%</b>	<b>100.00%</b>	<b>100.00%</b>

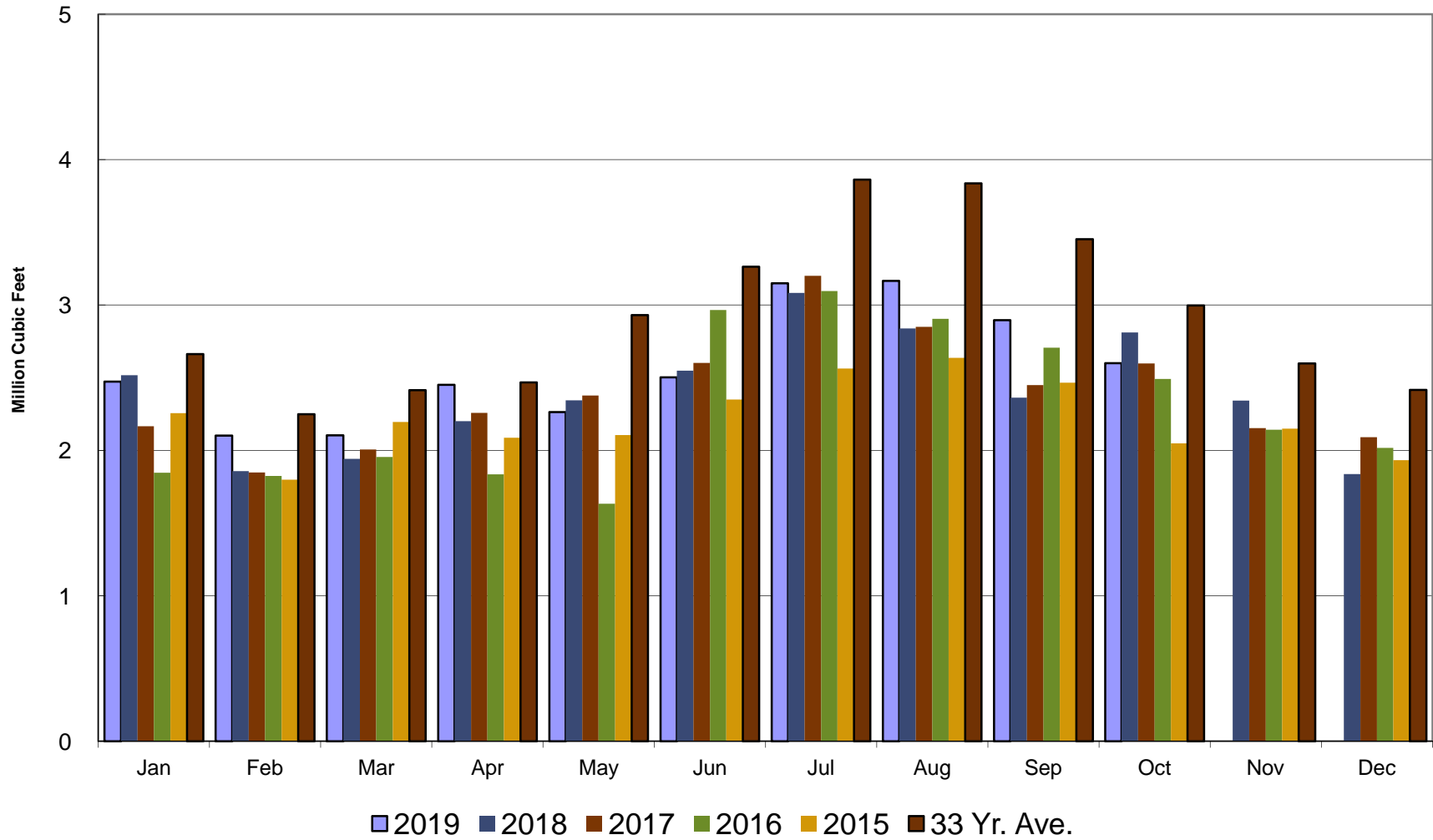
# Crestline Village Water District

## Water Sources - Last 13 Months



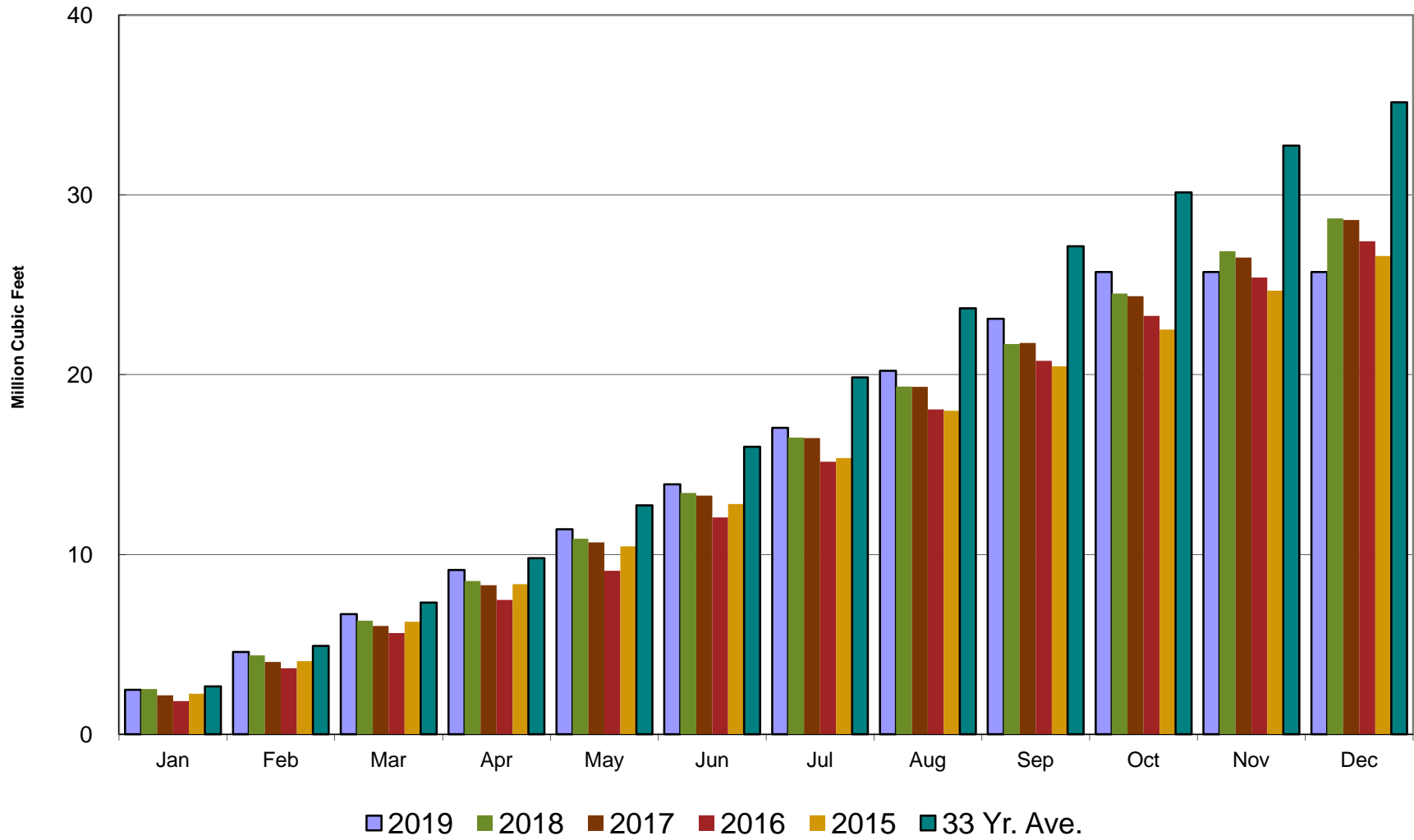
# Crestline Village Water District

## Total Production by Month



# Crestline Village Water District

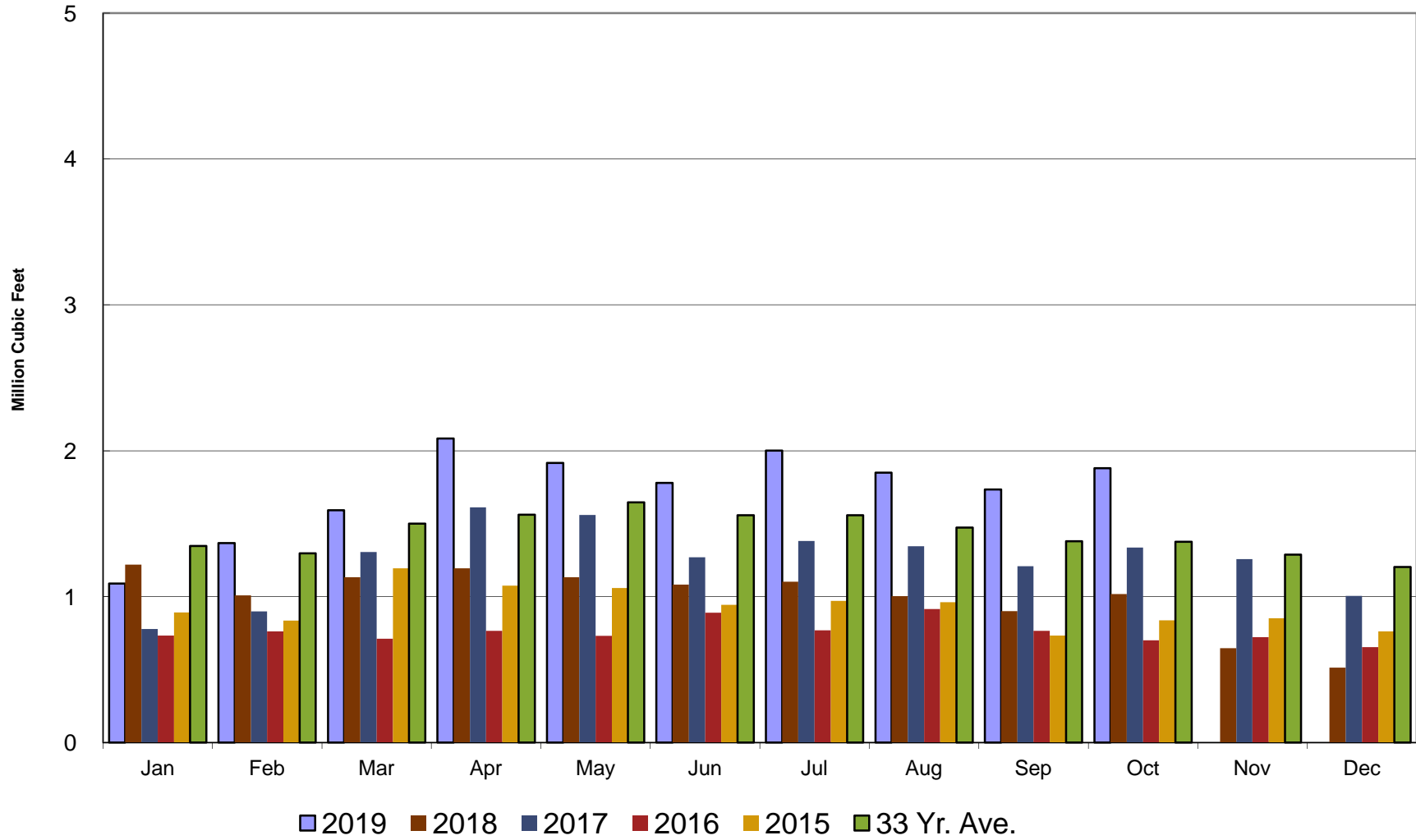
## Total Production Cumulative





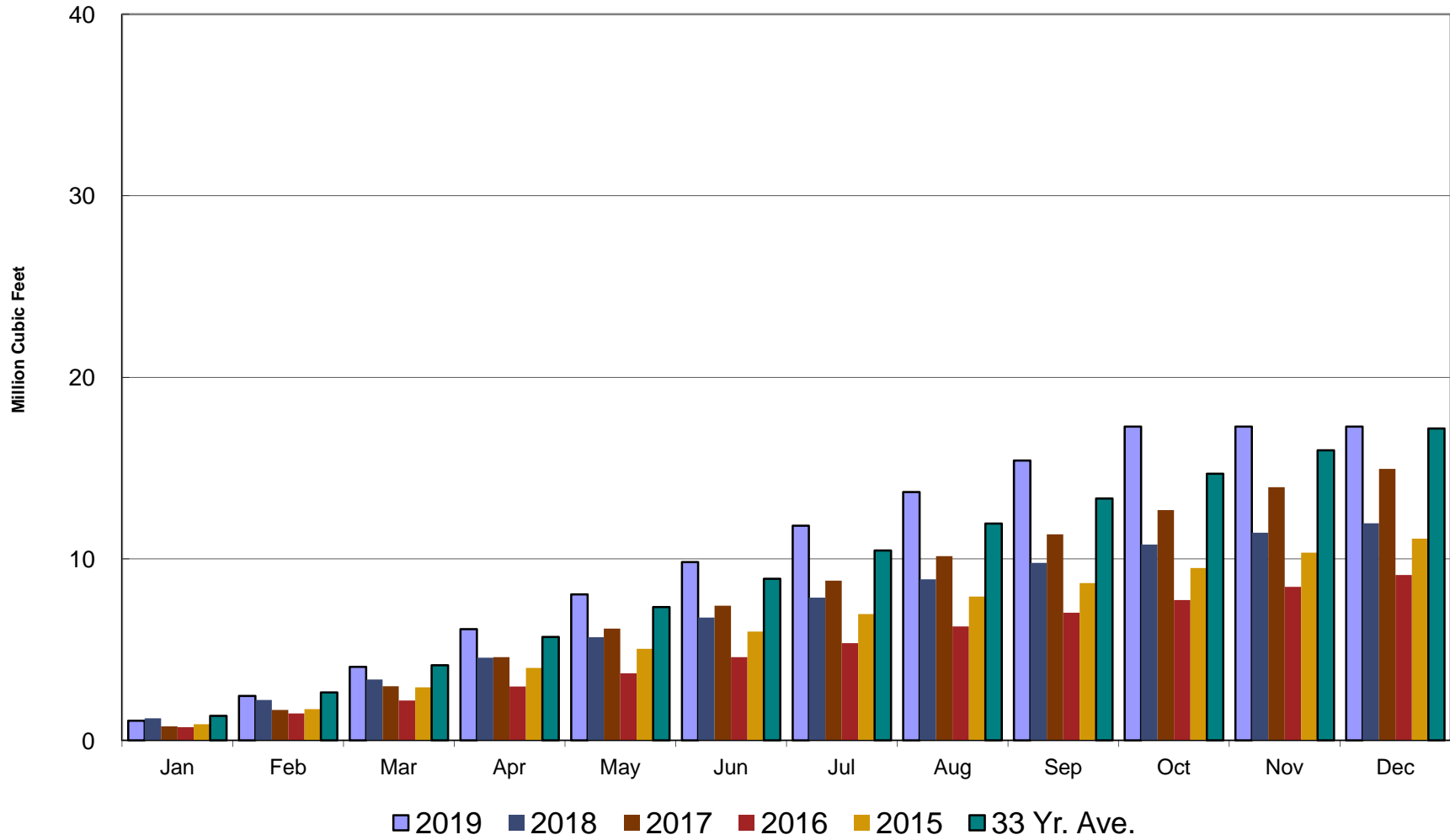
# Crestline Village Water District

## Well Production by Month



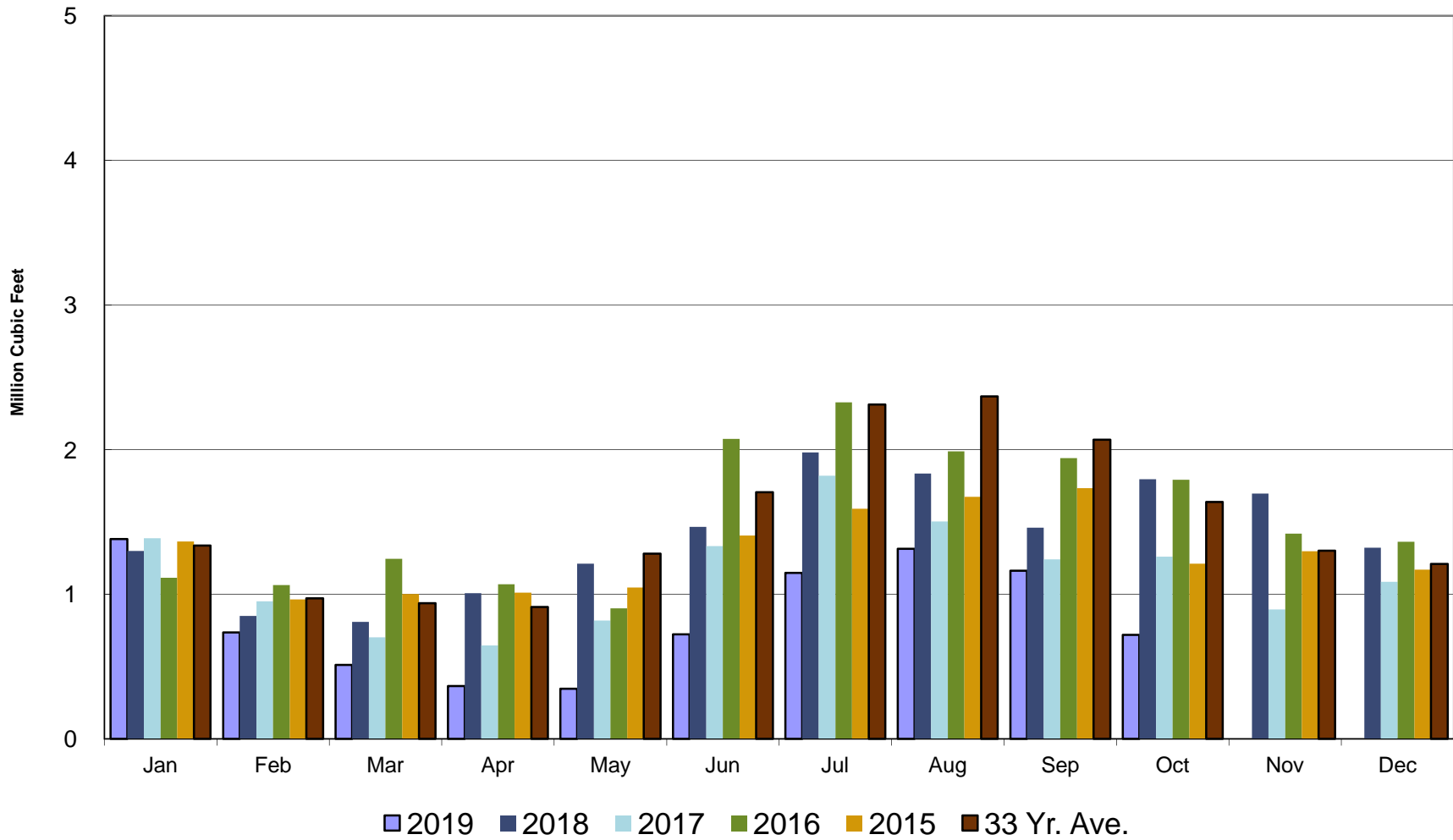
# Crestline Village Water District

## Well Production Cumulative



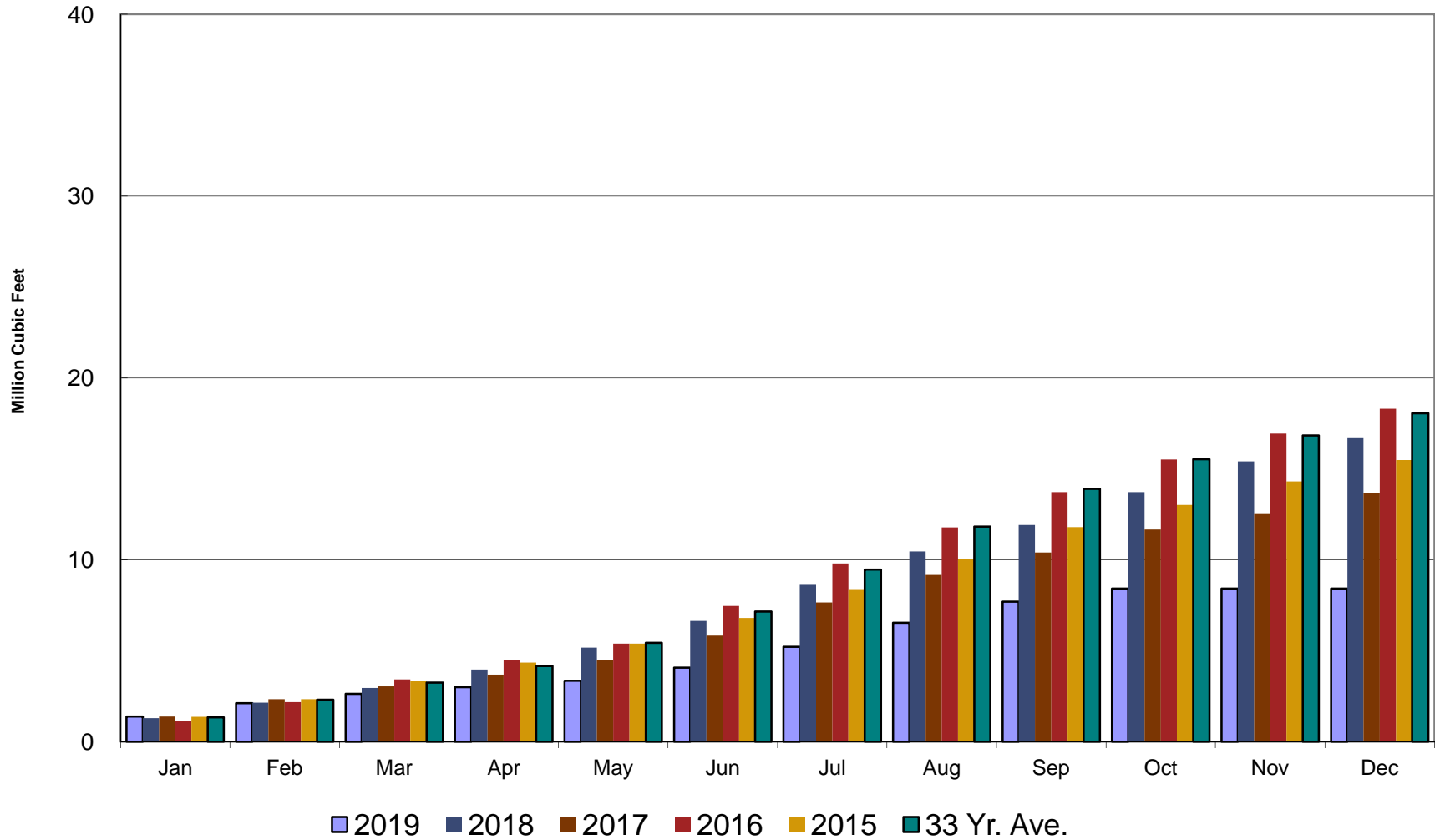
# Crestline Village Water District

## Purchased Water by Month



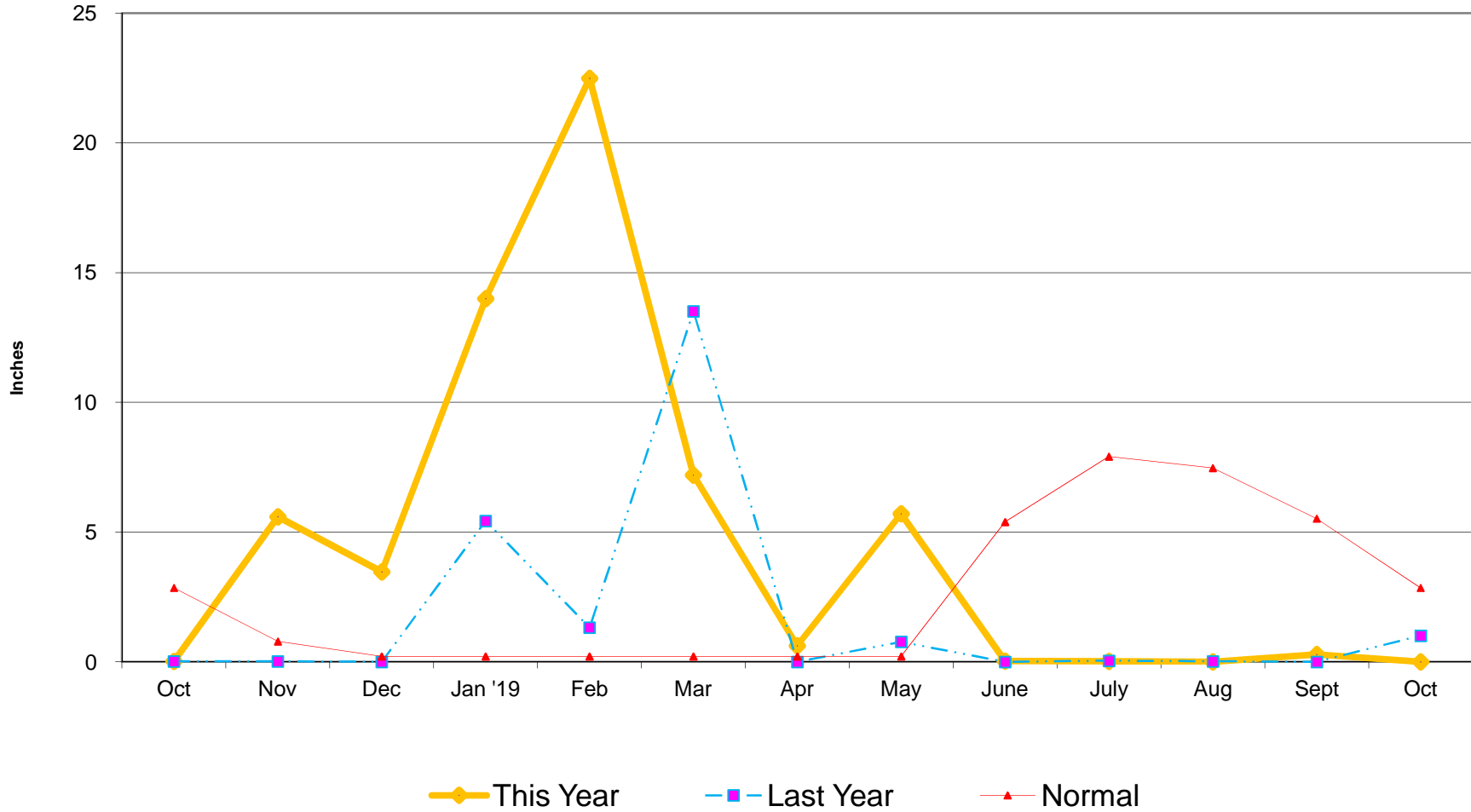
# Crestline Village Water District

## Purchased Water Cumulative



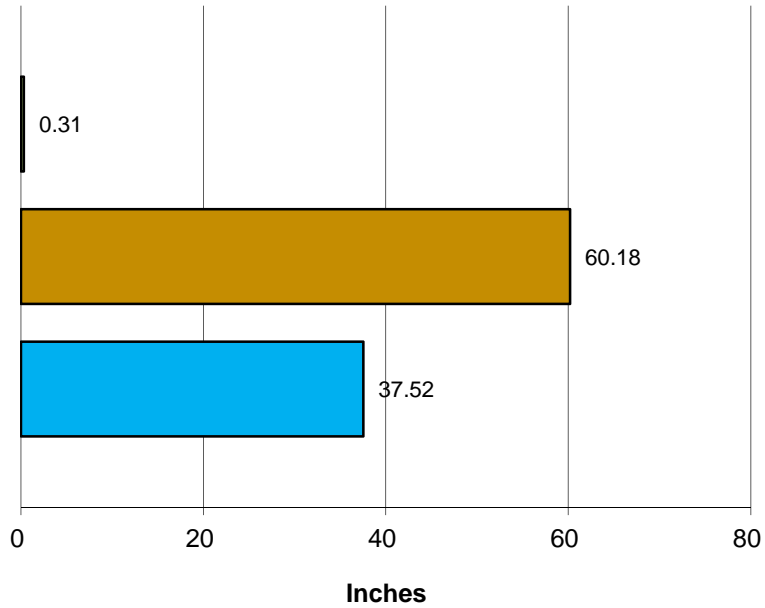
# Crestline Village Water District

## Rainfall - Last 13 Months



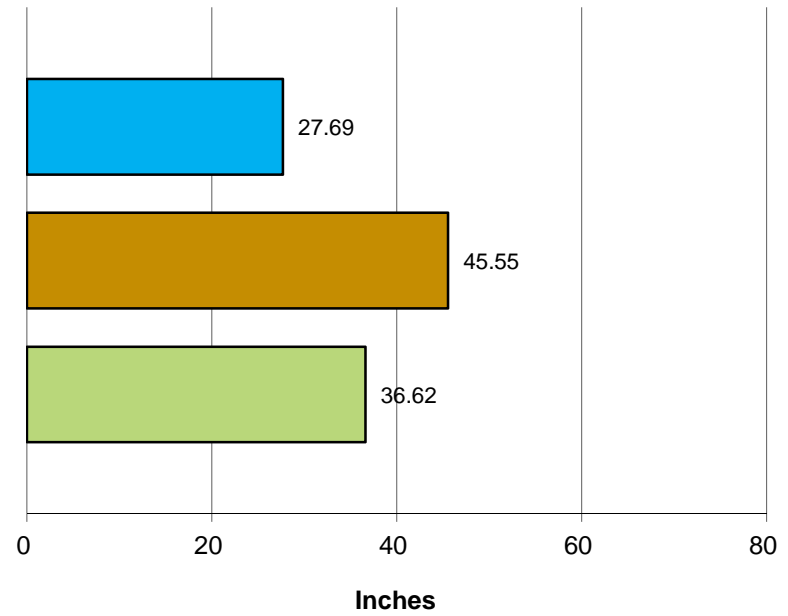
# Crestline Village Water District

**Total Rainfall  
July 1, 2018 to  
Beginning of Current Month**



■ This Year ■ Last Year ■ Normal

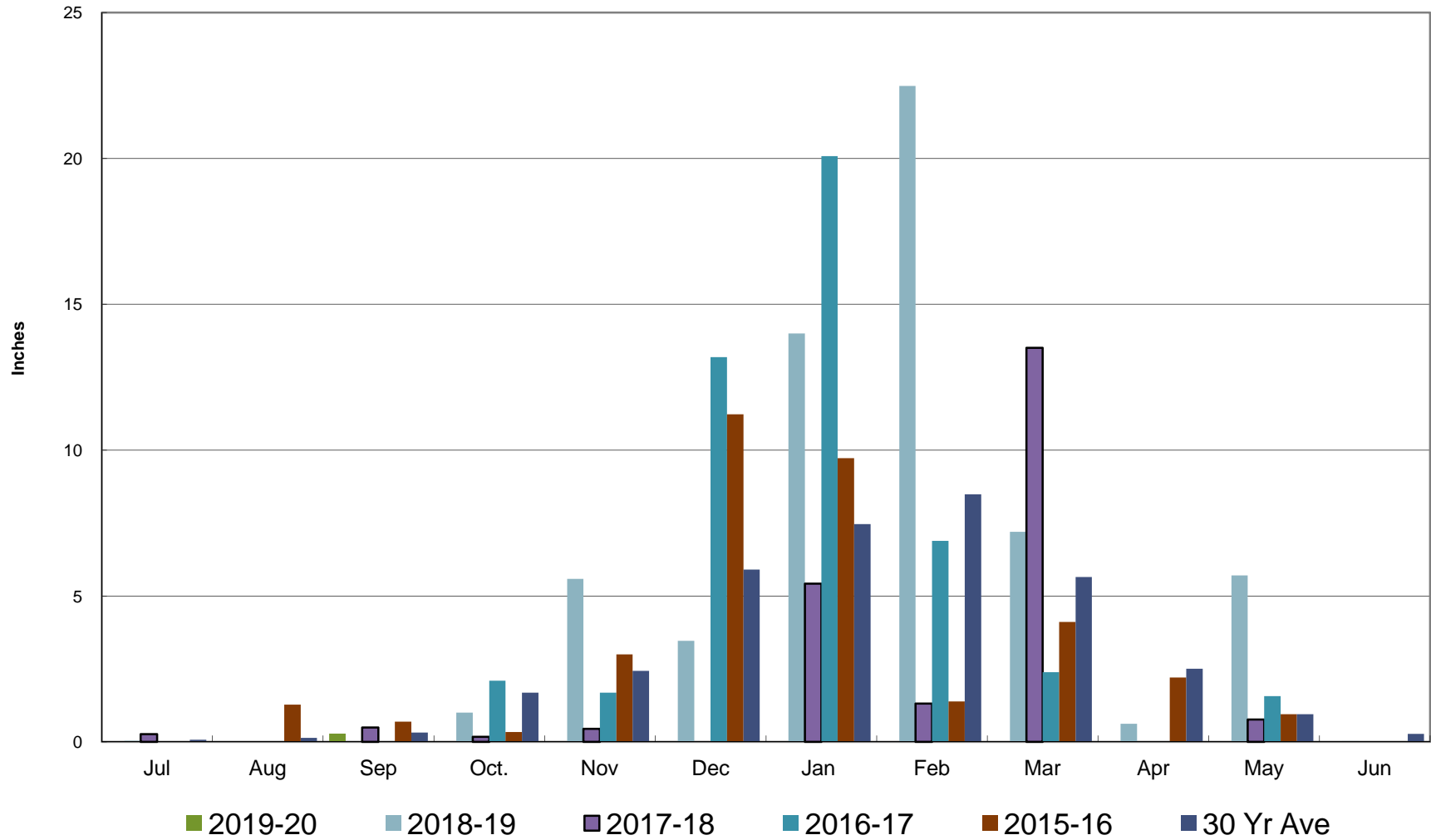
**Total Rainfall  
Last 12 Months**



■ This Year ■ Last Year ■ Normal

# Crestline Village Water District

## Rainfall by Month



# Crestline Village Water District

## Rainfall Cumulative

