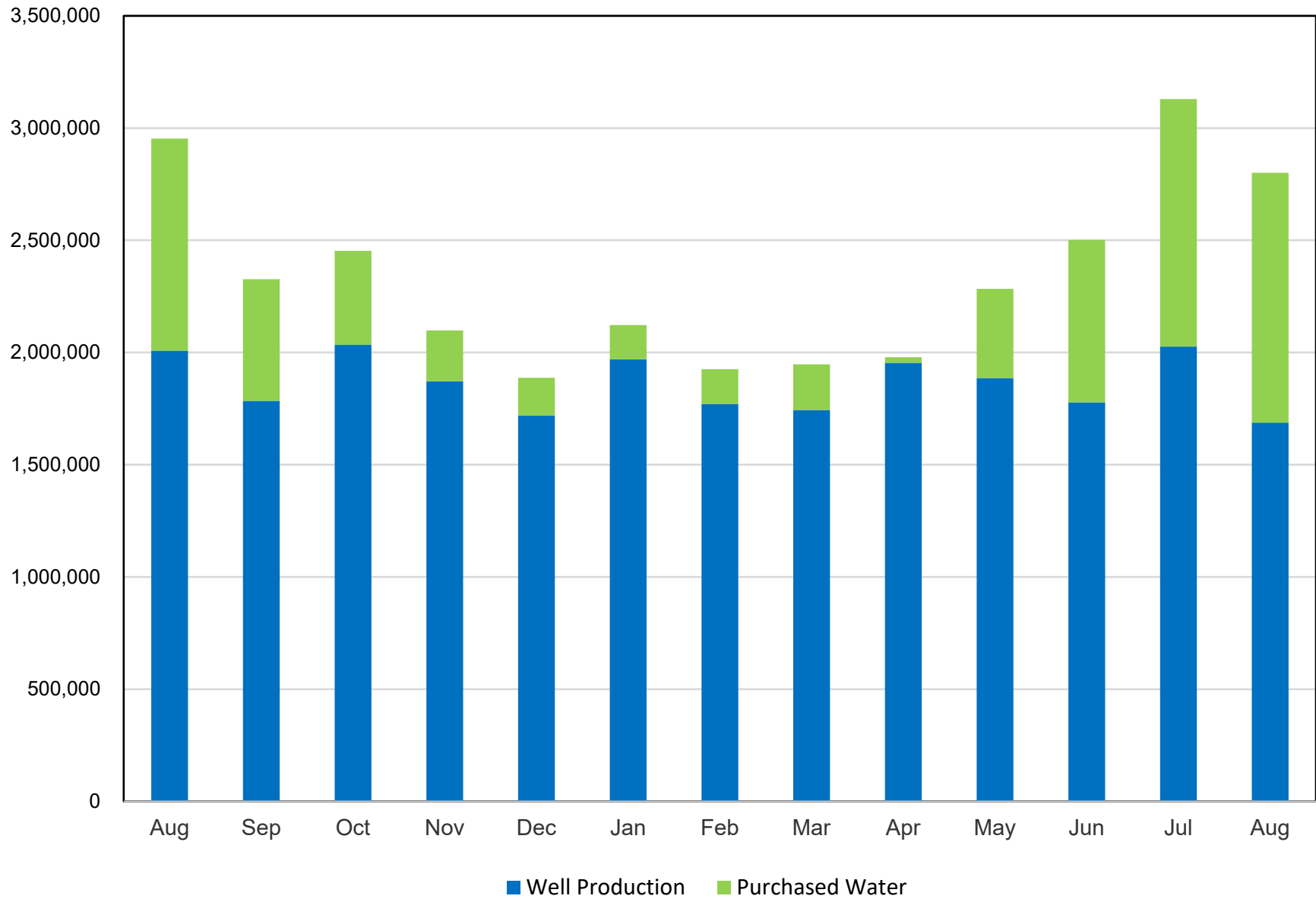


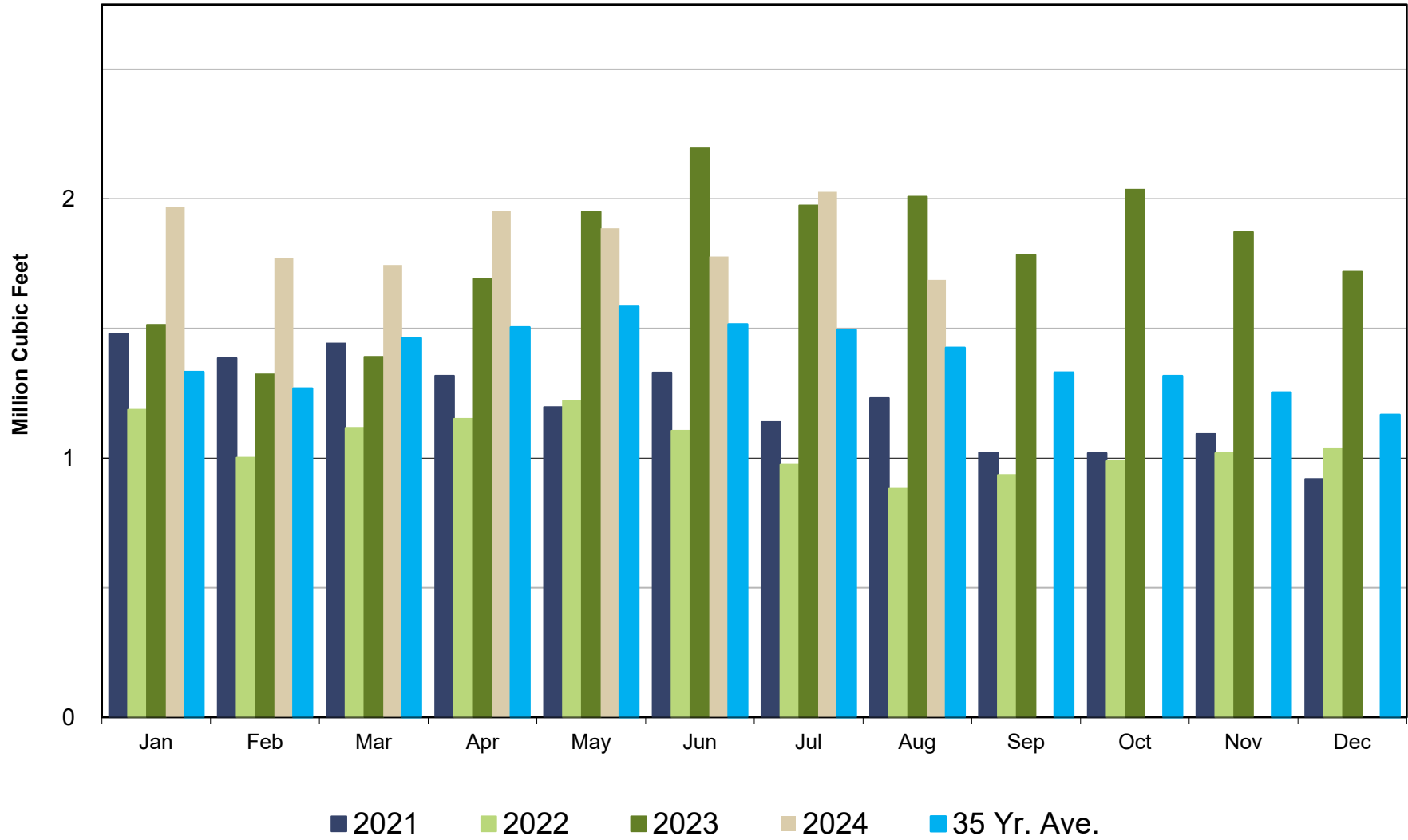
Crestline Village Water District

Water Sources - Last 13 Months in Cubic Feet July 2023 - July 2024



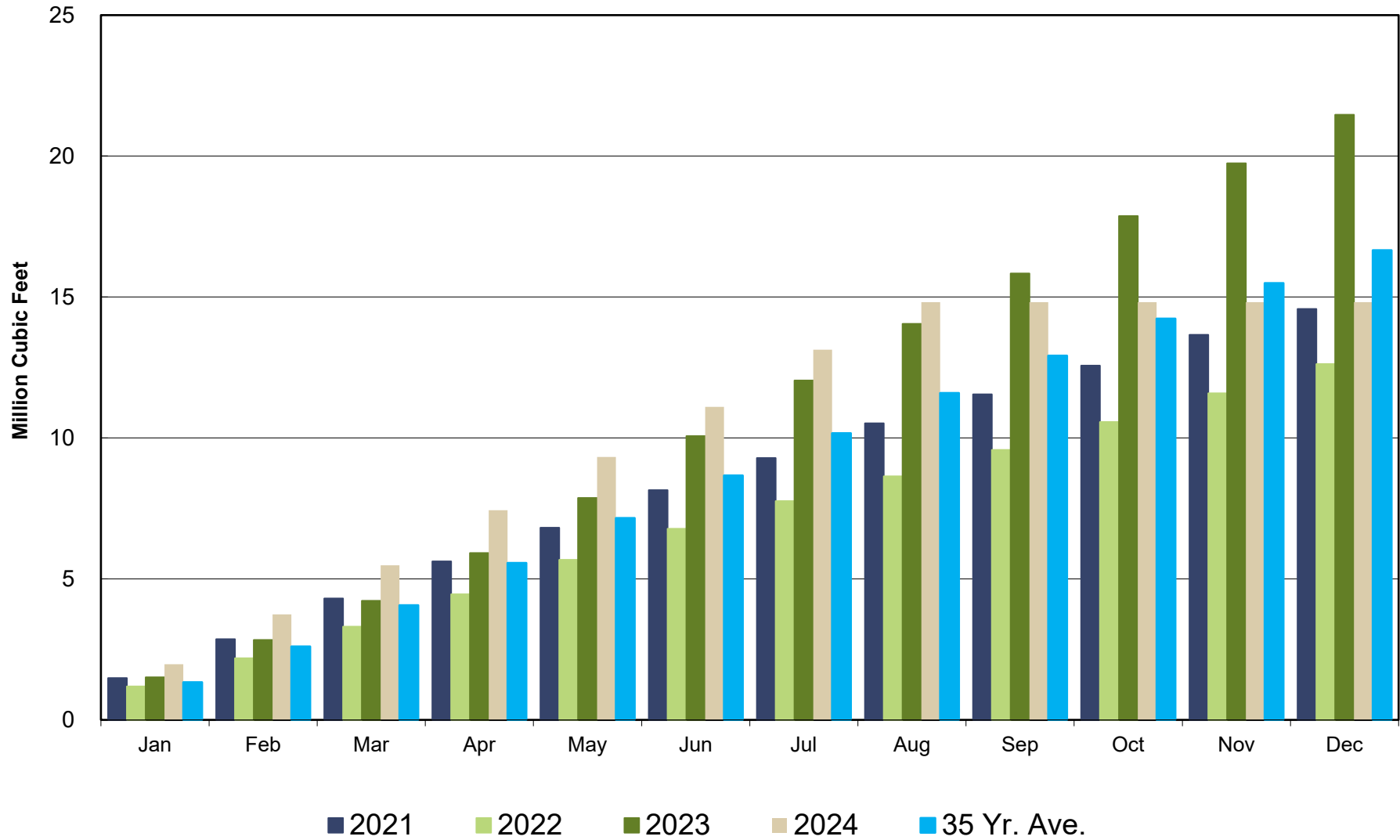
Crestline Village Water District

Well Production by Month Comparison



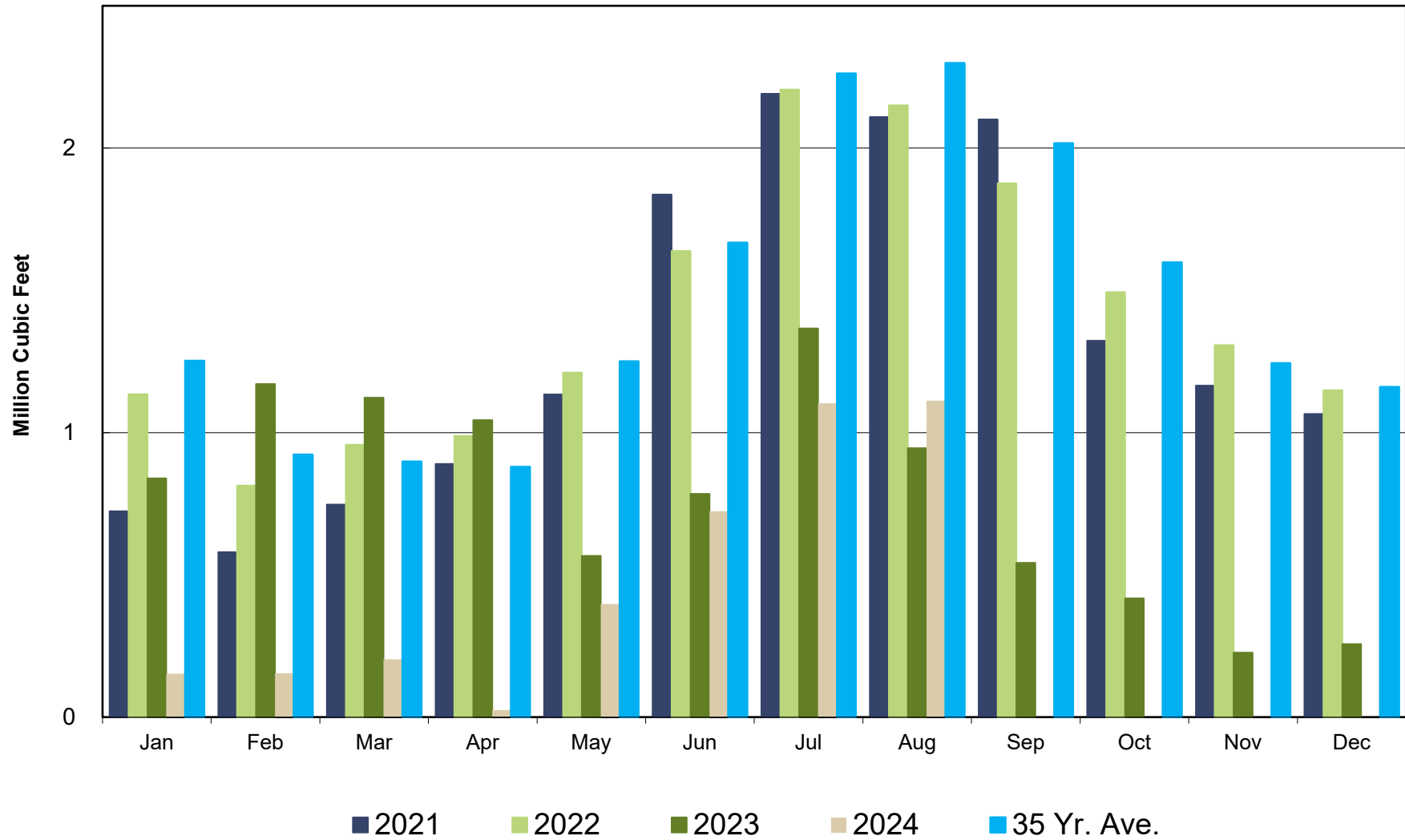
Crestline Village Water District

Well Production by Month Cumulative



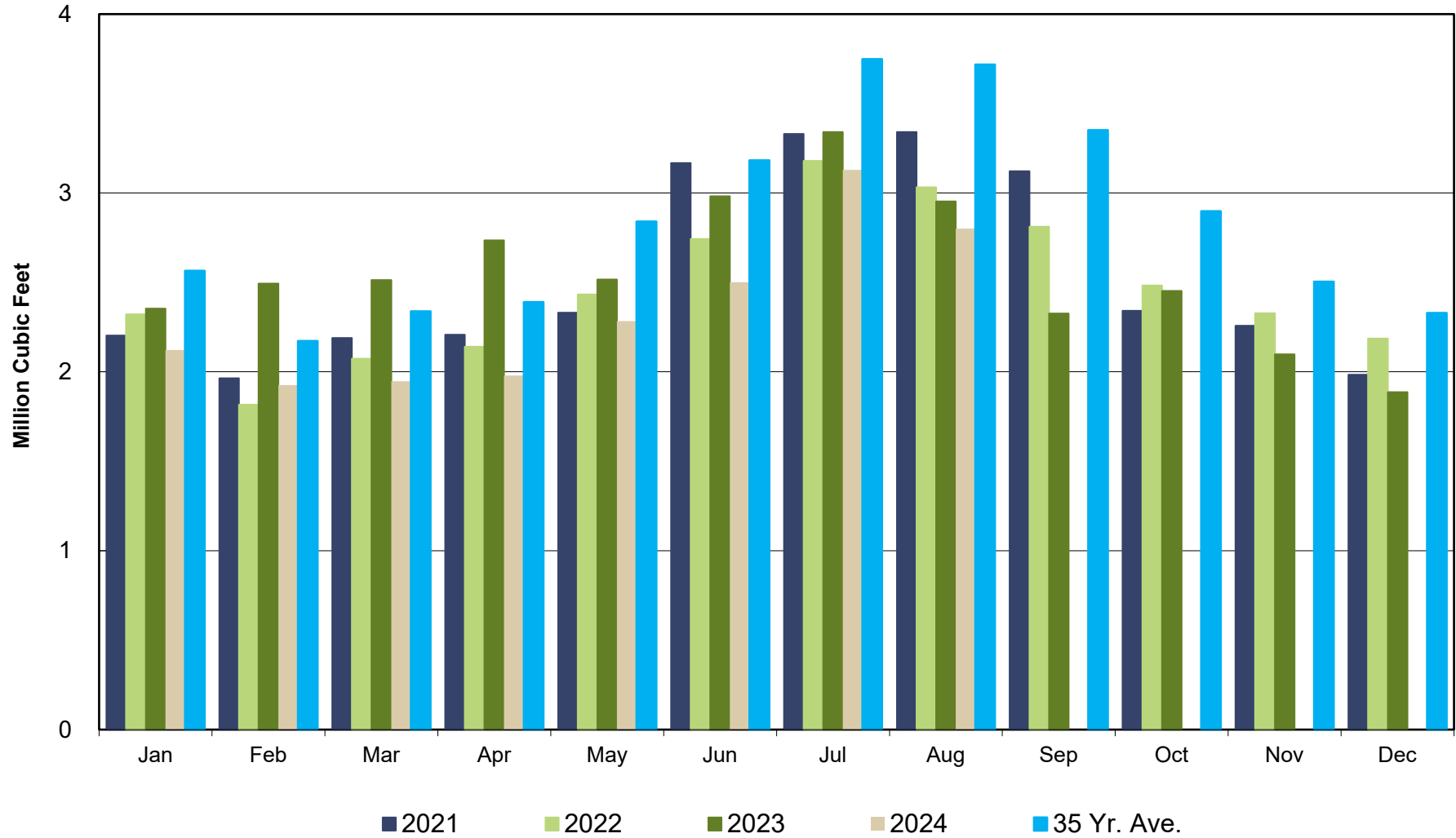
Crestline Village Water District

Purchased Water by Month Comparison



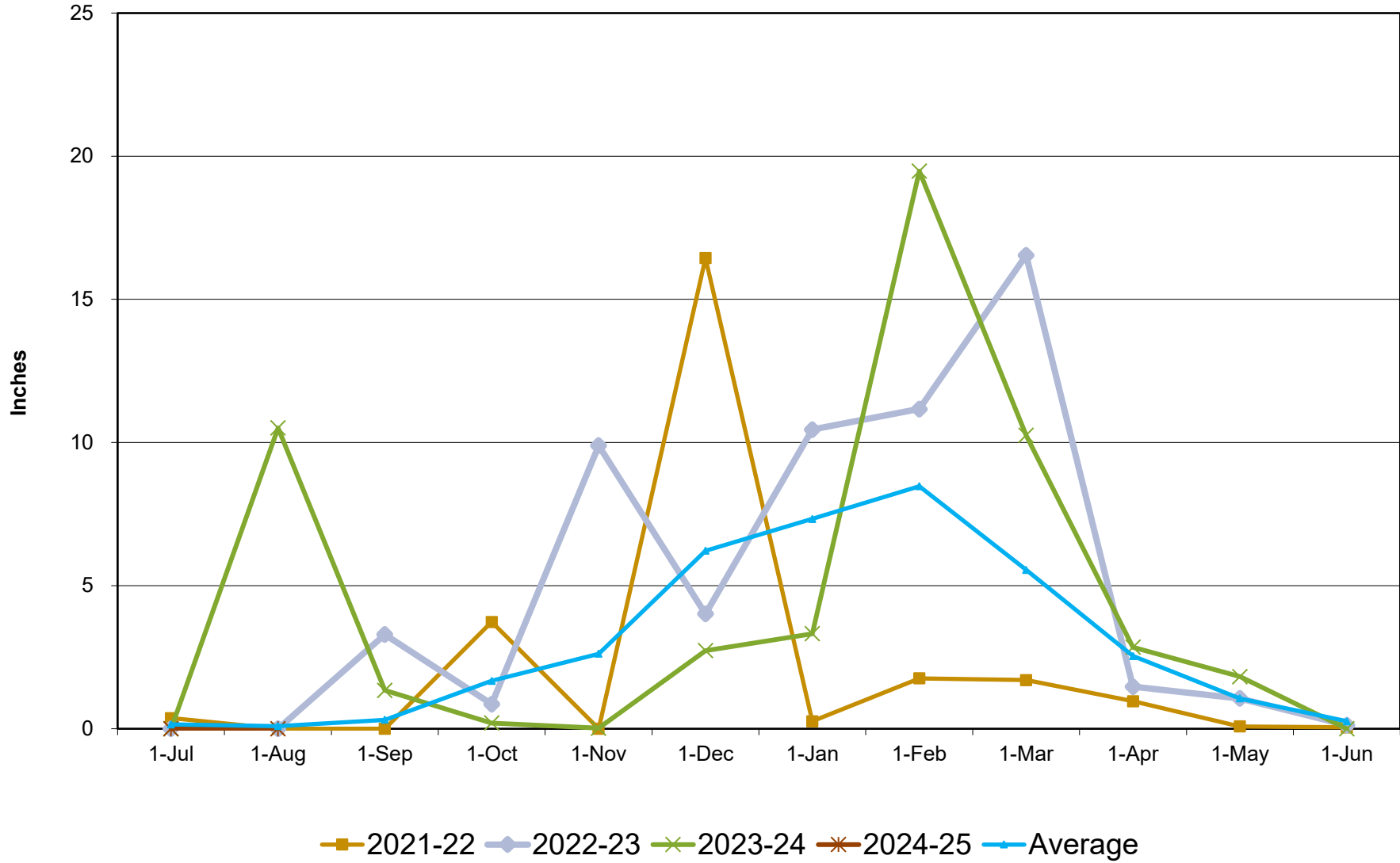
Crestline Village Water District

Total Production by Month Comparison



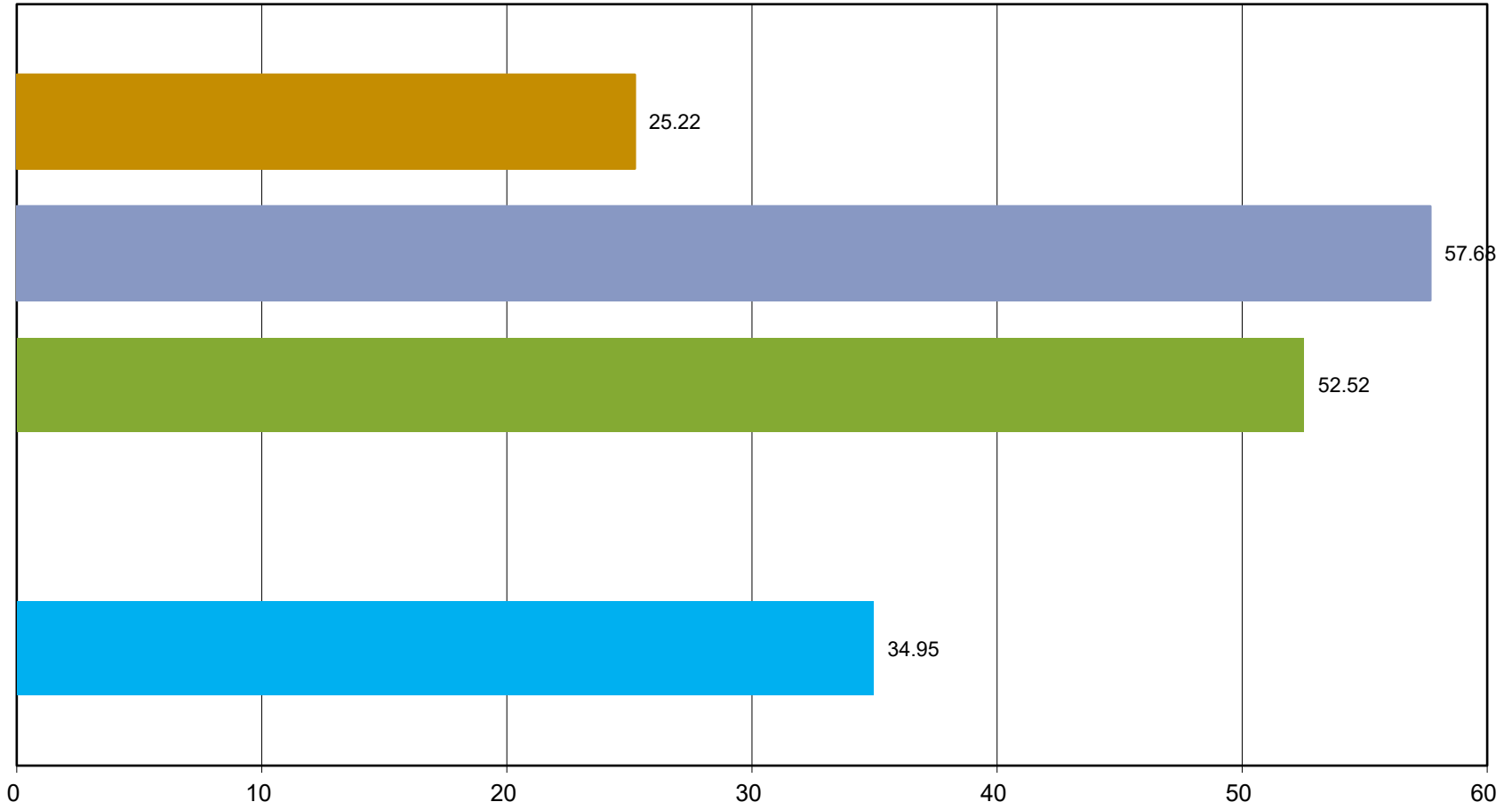
Crestline Village Water District

Rainfall Jul 1-Jun 30



Crestline Village Water District

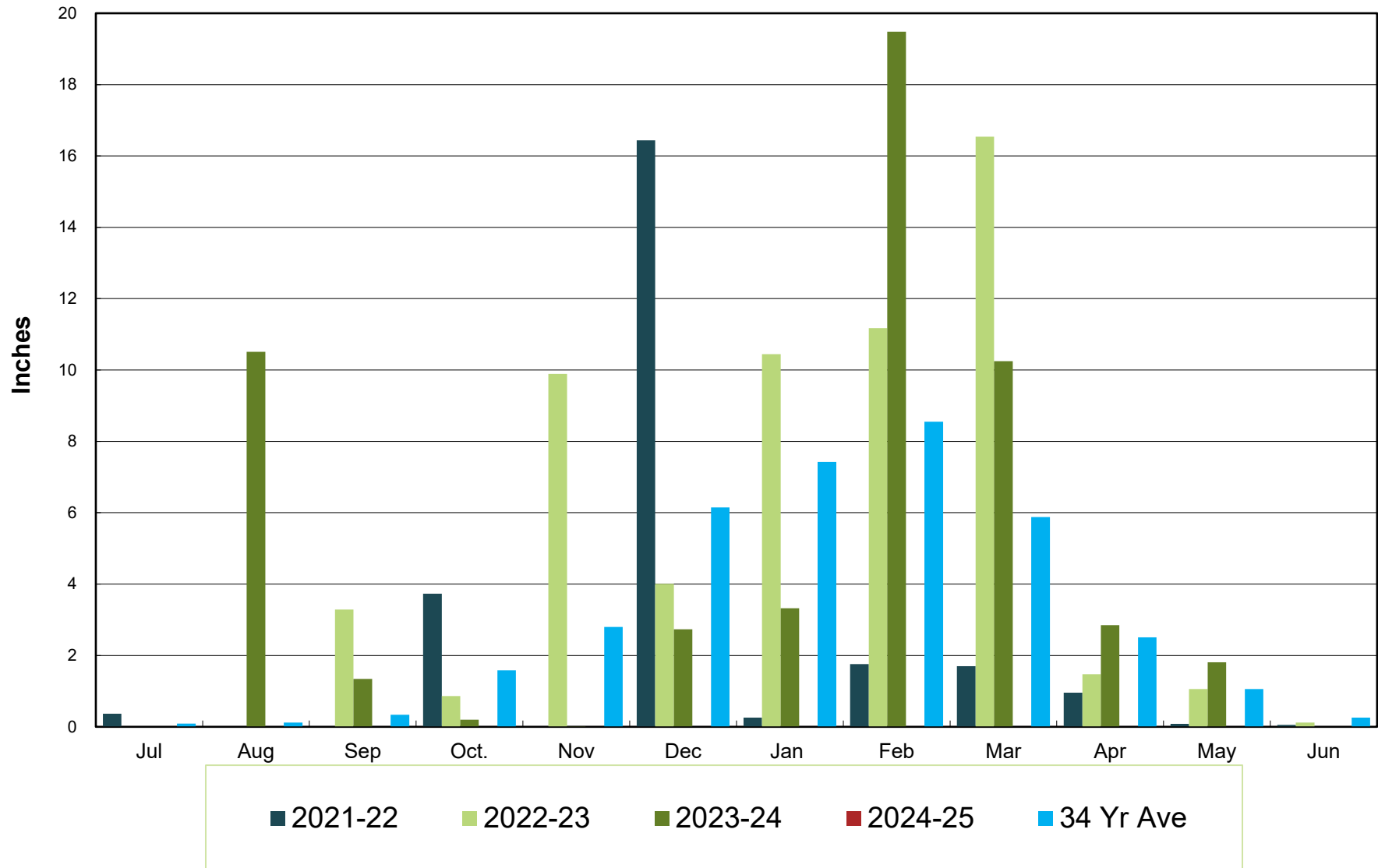
Total Rainfall Jul 1- Jun 30



■ 2021-22 ■ 2022-23 ■ 2023-24 ■ 2024-25 ■ Average

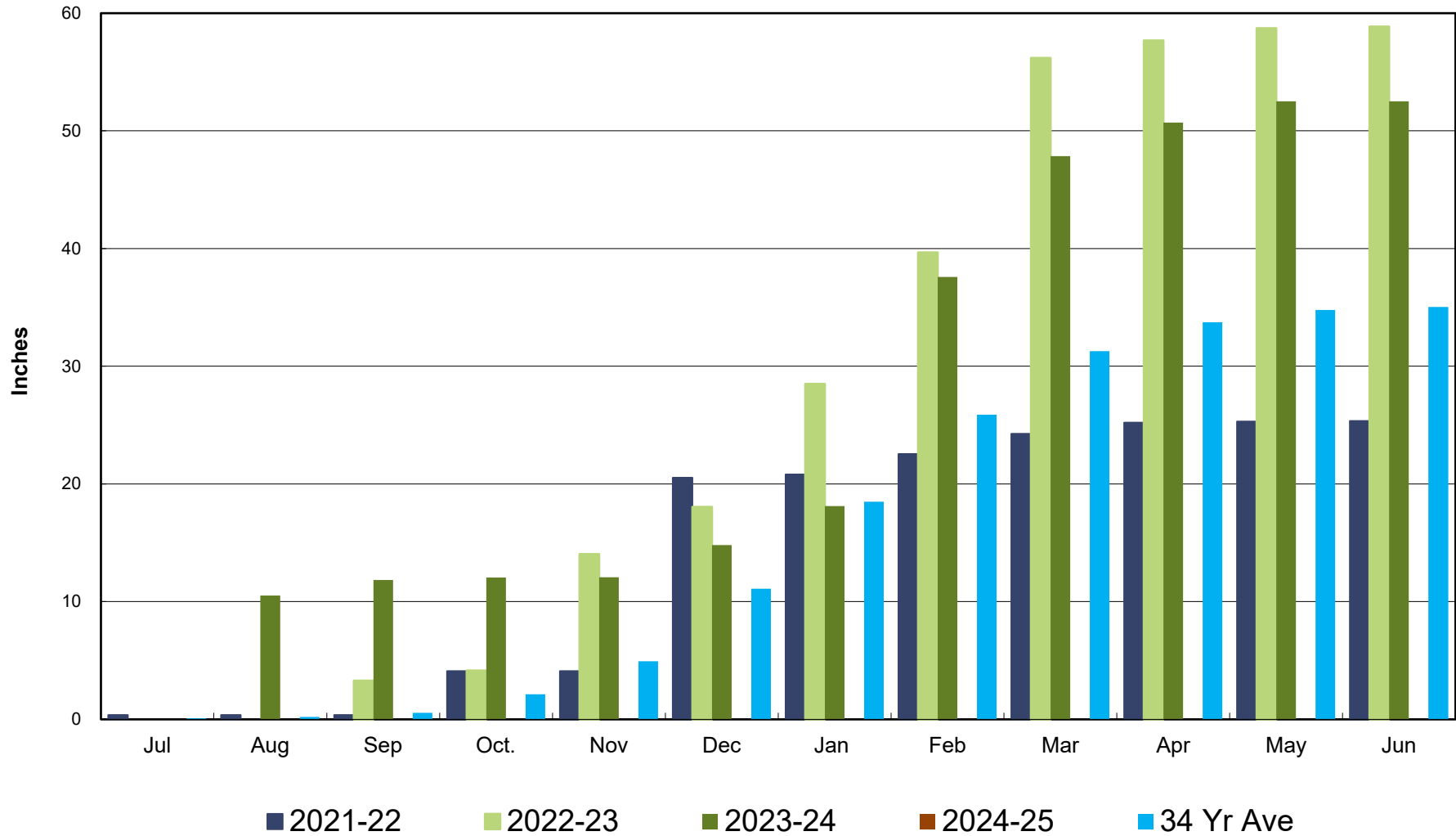
Crestline Village Water District

Rainfall by Month



Crestline Village Water District

Rainfall Cumulative



Crestline Village Water District
Change in Water Production - Cubic Feet
2020 vs 2023-24

<u>2023-24 Production</u>	<u>Aug</u>	<u>Sep</u>	<u>Oct</u>	<u>Nov</u>	<u>Dec</u>	<u>Jan</u>	<u>Feb</u>	<u>Mar</u>	<u>Apr</u>	<u>May</u>	<u>Jun</u>	<u>Jul</u>	<u>Aug</u>	<u>Average</u>
Wells	2,008,398	1,784,165	2,035,512	1,872,134	1,719,469	1,969,762	1,771,386	1,744,554	1,954,539	1,886,560	1,777,983	2,026,665	1,687,949	1,852,557
CLAWA	945,080	542,487	417,313	226,243	256,324	152,607	154,105	203,128	24,733	397,380	723,864	1,102,981	1,112,309	442,790
Total	2,953,478	2,326,652	2,452,825	2,098,377	1,975,793	2,122,369	1,925,491	1,947,682	1,979,272	2,283,940	2,501,847	3,129,646	2,800,258	2,295,346

2020 Production														
Wells	1,863,039	1,724,448	1,520,142	1,573,711	1,397,987	1,790,808	1,606,207	1,837,581	1,922,894	1,936,457	2,069,986	1,740,467	1,863,039	1,748,644
CLAWA	1,490,709	1,410,963	1,269,277	709,571	795,000	357,741	340,374	230,214	152,380	712,554	978,249	1,827,648	1,490,709	856,223
Total	3,353,748	3,135,411	2,789,419	2,283,282	2,192,987	2,148,549	1,946,581	2,067,795	2,075,274	2,649,011	3,048,235	3,568,115	3,353,748	2,604,867

Change in Production														
Wells	145,359	59,717	515,370	298,423	321,482	178,954	165,179	(93,027)	31,645	(49,897)	(292,003)	286,198	(175,090)	103,913
CLAWA	(545,629)	(868,476)	(851,964)	(483,328)	(538,676)	(205,134)	(186,269)	(27,086)	(127,647)	(315,174)	(254,385)	(724,667)	(378,400)	(413,434)
Total	(400,270)	(808,759)	(336,594)	(184,905)	(217,194)	(26,180)	(21,090)	(120,113)	(96,002)	(365,071)	(546,388)	(438,469)	(553,490)	(309,521)
Total (AF)	(9.19)	(18.57)	(7.73)	(4.24)	(4.99)	(0.60)	(0.48)	(2.76)	(2.20)	(8.38)	(12.54)	(10.07)	(12.71)	(7.11)

Crestline Village Water District
Change in Total Water Consumption - Cubic Feet
2020 vs 2023-24

<u>2023-24 Total Consumption</u>	<u>Aug</u>	<u>Sep</u>	<u>Oct</u>	<u>Nov</u>	<u>Dec</u>	<u>Jan</u>	<u>Feb</u>	<u>Mar</u>	<u>Apr</u>	<u>May</u>	<u>Jun</u>	<u>Jul</u>	<u>Aug</u>	<u>Total</u>
Cubic Feet	2,686,400	2,359,599	2,120,401	2,056,200	1,917,150	1,839,915	1,795,615	1,570,585	1,739,690	1,905,983	2,182,219	2,431,800	2,237,601	24,156,758
Total	2,686,400	2,359,599	2,120,401	2,056,200	1,917,150	1,839,915	1,795,615	1,570,585	1,739,690	1,905,983	2,182,219	2,431,800	2,237,601	24,156,758

2020 Total Consumption														
Cubic Feet	3,005,506	3,281,600	2,889,200	2,638,000	2,114,721	2,147,430	1,973,581	1,859,473	1,972,980	2,189,010	2,668,700	2,833,100	3,005,506	29,573,301
Total	3,005,506	3,281,600	2,889,200	2,638,000	2,114,721	2,147,430	1,973,581	1,859,473	1,972,980	2,189,010	2,668,700	2,833,100	3,005,506	29,573,301

Change in Total Consumption														Average
Cubic Feet	(319,106)	(922,001)	(768,799)	(581,800)	(197,571)	(307,515)	(177,966)	(288,888)	(233,290)	(283,027)	(486,481)	(401,300)	(767,905)	(451,379)
Cubic Feet	(319,106)	(922,001)	(768,799)	(581,800)	(197,571)	(307,515)	(177,966)	(288,888)	(233,290)	(283,027)	(486,481)	(401,300)	(767,905)	(451,379)
Total (AF)	(7.33)	(21.17)	(17.65)	(13.36)	(4.54)	(7.06)	(4.09)	(6.63)	(5.36)	(6.50)	(11.17)	(9.21)	(17.63)	(10.36)

% Change	-10.62%	-28.10%	-26.61%	-22.05%	-9.34%	-14.32%	-9.02%	-15.54%	-11.82%	-12.93%	-18.23%	-14.16%	-25.55%	-17.31%
Total	-10.62%	-28.10%	-26.61%	-22.05%	-9.34%	-14.32%	-9.02%	-15.54%	-11.82%	-12.93%	-18.23%	-14.16%	-25.55%	-17.31%

**Crestline Village Water District
Gallons Per Capita Daily Calculation**

	<u>Aug</u>	<u>Sep</u>	<u>Oct</u>	<u>Nov</u>	<u>Dec</u>	<u>Jan</u>	<u>Feb</u>	<u>Mar</u>	<u>Apr</u>	<u>May</u>	<u>Jun</u>	<u>Jul</u>	<u>Aug</u>	<u>Average</u>
2023-24														
Residential Services with 92325 Zip	3,863	3,863	3,863	3,863	3,863	3,863	3,863	3,863	3,863	3,863	3,863	3,863	3,863	3,863
People per Household	2.47	2.47	2.47	2.47	2.47	2.47	2.47	2.47	2.47	2.47	2.47	2.47	2.47	2.47
Est. Full-Time Population	9,542	9,542	9,542	9,542	9,542	9,542	9,542	9,542	9,542	9,542	9,542	9,542	9,542	9,542
Days Per Month	31	30	31	30	31	31	29	31	30	31	30	31	31	31
Gallons Water Produced	22,092,015	17,403,357	18,347,131	15,695,860	14,778,932	15,875,320	14,402,673	14,568,661	14,804,955	17,083,871	18,713,816	23,409,752	20,945,930	17,396,611
92325 Residential Water Usage (CF)	2,167,300	1,945,800	1,769,000	1,754,500	1,668,200	1,665,965	1,622,800	1,428,400	1,569,590	1,556,810	1,886,700	2,026,100	1,778,301	1,722,681
% Residential Water	80.7%	82.5%	83.4%	85.3%	87.0%	90.6%	90.4%	91.0%	90.2%	81.7%	86.5%	83.3%	79.5%	85.94%
Gallons Per Capita Daily - 2022/23	74.69	60.80	62.03	54.83	49.96	53.67	52.05	49.25	51.72	57.75	65.37	79.14	70.81	59.72
R - Gallons Per Capita Daily - 2022/23	60.26	50.13	51.75	46.79	43.47	48.60	47.04	44.79	46.66	47.17	56.52	65.94	56.27	50.83
2020														
Residential Services with 92325 Zip	3,863	3,863	3,863	3,863	3,863	3,863	3,863	3,863	3,863	3,863	3,863	3,863	3,863	3,863
People per Household	2.47	2.47	2.47	2.47	2.47	2.47	2.47	2.47	2.47	2.47	2.47	2.47	2.47	2.47
Est. Full-Time Population	9,542	9,542	9,542	9,542	9,542	9,542	9,542	9,542	9,542	9,542	9,542	9,542	9,542	9,542
Days Per Month	31	30	31	30	31	31	29	31	30	31	30	31	31	31
Gallons Water Produced	25,086,035	23,452,874	20,864,854	17,078,949	16,403,543	16,071,147	14,560,426	15,467,107	15,523,050	19,814,602	22,800,798	26,689,500	25,086,035	19,484,407
92325 Residential Water Usage (CF)	2,551,906	2,752,100	2,421,300	2,219,900	1,910,021	1,846,800	1,735,931	1,562,890	1,715,180	1,967,800	2,263,800	2,357,300	2,551,906	25,304,928
% Residential Water	84.9%	83.9%	83.8%	84.2%	90.3%	86.0%	88.0%	84.1%	86.9%	89.9%	84.8%	83.2%	84.9%	85.83%
Gallons Per Capita Daily - 2020	84.81	81.93	70.54	59.66	55.45	54.33	52.62	52.29	54.23	66.99	79.65	90.23	84.81	66.89
R - Gallons Per Capita Daily - 2020	72.01	68.71	59.12	50.21	50.09	46.72	46.28	43.95	47.14	60.21	67.57	75.08	72.01	57.26
Change R-GPCD 2020-2023	(11.75)	(18.57)	(7.37)	(3.42)	(6.61)	1.87	0.76	0.85	(0.48)	(13.04)	(11.05)	(9.14)	(15.74)	(6.42)
% Change	-16.32%	-27.03%	-12.47%	-6.81%	-13.21%	4.01%	1.64%	1.92%	-1.02%	-21.66%	-16.35%	-12.17%	-21.85%	-11.22%