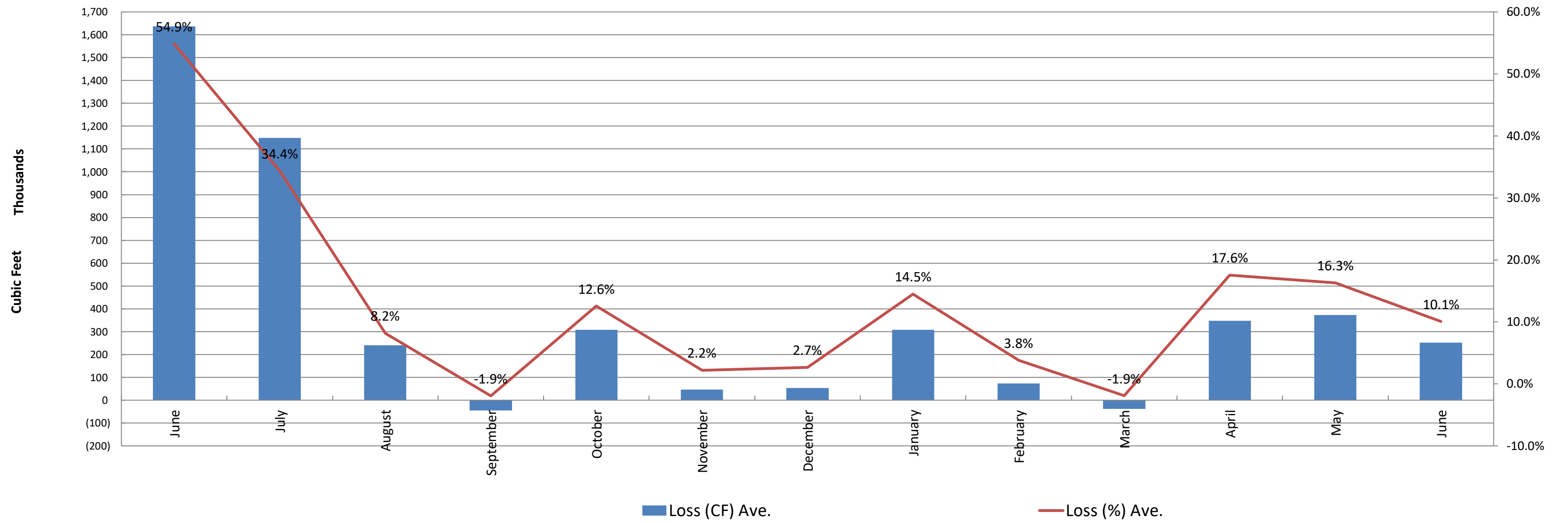


**Crestline Village Water District  
Source of Supply Production Report  
System Loss - Last 13 Months  
In Cubic Feet**

	May	June	July	August	September	October	November	December	January	February	March	April	May	June	Average
<b>Sources of Supply</b>															
Wells	1,950,283	2,197,566	1,975,165	2,008,398	1,784,165	2,035,512	1,872,134	1,719,469	1,969,762	1,771,386	1,744,554	1,954,539	1,886,560	1,777,983	1,899,784
Purchased Water	566,791	784,853	1,366,110	945,080	542,487	417,313	226,243	256,324	152,607	154,105	203,128	24,733	397,380	723,864	476,479
Adjustment to Wells *	0	0	0	0	0	0	0	0							0
<b>Total Water Supplied</b>	<b>2,517,074</b>	<b>2,982,419</b>	<b>3,341,275</b>	<b>2,953,478</b>	<b>2,326,652</b>	<b>2,452,825</b>	<b>2,098,377</b>	<b>1,975,793</b>	<b>2,122,369</b>	<b>1,925,491</b>	<b>1,947,682</b>	<b>1,979,272</b>	<b>2,283,940</b>	<b>2,501,847</b>	<b>2,376,263</b>
<b>Water Used **</b>															
<b>Metered Accounts</b>															
Crestline Area	840,360	1,167,040	1,014,300	1,323,900	1,188,299	1,058,601	1,013,300	972,250	835,015	850,800	794,400	810,311	903,070	1,050,819	986,090
Lake Gregory Area	988,400	179,800	1,187,200	1,362,500	1,171,300	1,061,800	1,042,900	944,900	1,004,900	944,815	1,222,800	817,787	1,002,913	1,131,400	988,662
Change in Storage	1,216	(497)	(12,066)	22,864	8,805	7,177	(8,424)	2,224	(28,203)	53,567	(43,075)	(19,616)	(17,506)	63,543	549
Flushing, System & Other	33,779	0	2,984	2,984	3,251	17,321	4,139	3,438	2,984	2,791	11,031	23,289	22,984	3,556	8,529
<b>Accounted for Water</b>	<b>1,863,755</b>	<b>1,346,343</b>	<b>2,192,418</b>	<b>2,712,248</b>	<b>2,371,655</b>	<b>2,144,899</b>	<b>2,051,915</b>	<b>1,922,812</b>	<b>1,814,696</b>	<b>1,851,973</b>	<b>1,985,156</b>	<b>1,631,771</b>	<b>1,911,461</b>	<b>2,249,318</b>	<b>1,983,830</b>
<b>Month to Month Averaging ***</b>															
<b>System Loss (CF)</b>	653,319	1,636,076	1,148,857	241,230	(45,003)	307,926	46,462	52,981	307,673	73,518	(37,474)	347,501	372,479	252,529	428,338
<b>System Loss (%)</b>	26.0%	54.9%	34.4%	8.2%	-1.9%	12.6%	2.2%	2.7%	14.5%	3.8%	-1.9%	17.6%	16.3%	10.1%	15.6%
<b>System Loss (GPM)</b>	102.8	283.3	192.5	40.4	(8.1)	50.0	8.0	9.5	48.4	13.2	(6.7)	58.2	60.5	46.8	72.8
<b>Month to Month Averaging ***</b>															
<b>System Loss (CF)</b>	744,326	1,144,698	1,392,466	695,043	98,113	131,461	177,194	49,722	180,327	190,596	18,022	155,014	359,990	312,504	313,371
<b>System Loss (%)</b>	28.2%	40.4%	44.6%	21.3%	3.1%	5.3%	7.4%	2.4%	8.6%	9.2%	0.9%	7.8%	16.9%	13.2%	11.7%
<b>System Loss (GPM)</b>	128.9	193.1	237.9	116.5	16.2	21.0	29.0	8.8	29.0	30.8	3.2	25.8	59.3	53.7	63.4
<b>Estimated Uses</b>															
Known leaks - Est. loss	2,214	3,369	22,481	6,048	7,171	13,530	241	0	0	0	5,329	1,952	689	1,893	4,823
<b>Total Estimated Loses</b>	<b>35,993</b>	<b>3,369</b>	<b>25,465</b>	<b>9,032</b>	<b>10,422</b>	<b>30,851</b>	<b>4,380</b>	<b>3,438</b>	<b>2,984</b>	<b>2,791</b>	<b>16,360</b>	<b>25,241</b>	<b>23,673</b>	<b>5,449</b>	<b>14,246</b>
<b>Unaccounted for Water (CF)</b>	<b>653,319</b>	<b>1,636,076</b>	<b>1,148,857</b>	<b>241,230</b>	<b>(45,003)</b>	<b>307,926</b>	<b>46,462</b>	<b>52,981</b>	<b>307,673</b>	<b>73,518</b>	<b>(37,474)</b>	<b>347,501</b>	<b>372,479</b>	<b>252,529</b>	<b>361,904</b>
<b>Unaccounted For (%)</b>	<b>26.0%</b>	<b>54.9%</b>	<b>34.4%</b>	<b>8.2%</b>	<b>-1.9%</b>	<b>12.6%</b>	<b>2.2%</b>	<b>2.7%</b>	<b>14.5%</b>	<b>3.8%</b>	<b>-1.9%</b>	<b>17.6%</b>	<b>16.3%</b>	<b>10.1%</b>	<b>13.3%</b>
<b>Unaccounted For (GPM)</b>	<b>102.8</b>	<b>283.3</b>	<b>192.5</b>	<b>40.4</b>	<b>(8.1)</b>	<b>50.0</b>	<b>8.0</b>	<b>9.5</b>	<b>48.4</b>	<b>13.2</b>	<b>(6.7)</b>	<b>58.2</b>	<b>60.5</b>	<b>46.8</b>	<b>29</b>
Number of Days in Period	33	30	31	31	30	31	30	31	31	29	29	31	31	30	31
	<b>This Month</b>														<b>Average</b>
Cost of System Loss:		\$9,091													\$11,281
Cost of 5% System Loss:		\$4,503													\$4,277
<b>Amount above (below) 5% System Loss</b>		<b>\$4,588</b>													<b>\$7,004</b>

# Crestline Village Water District

## System Loss Last 13 Months Month to Month



# Crestline Village Water District

## System Loss Last 13 Months With Month to Month Averaging

